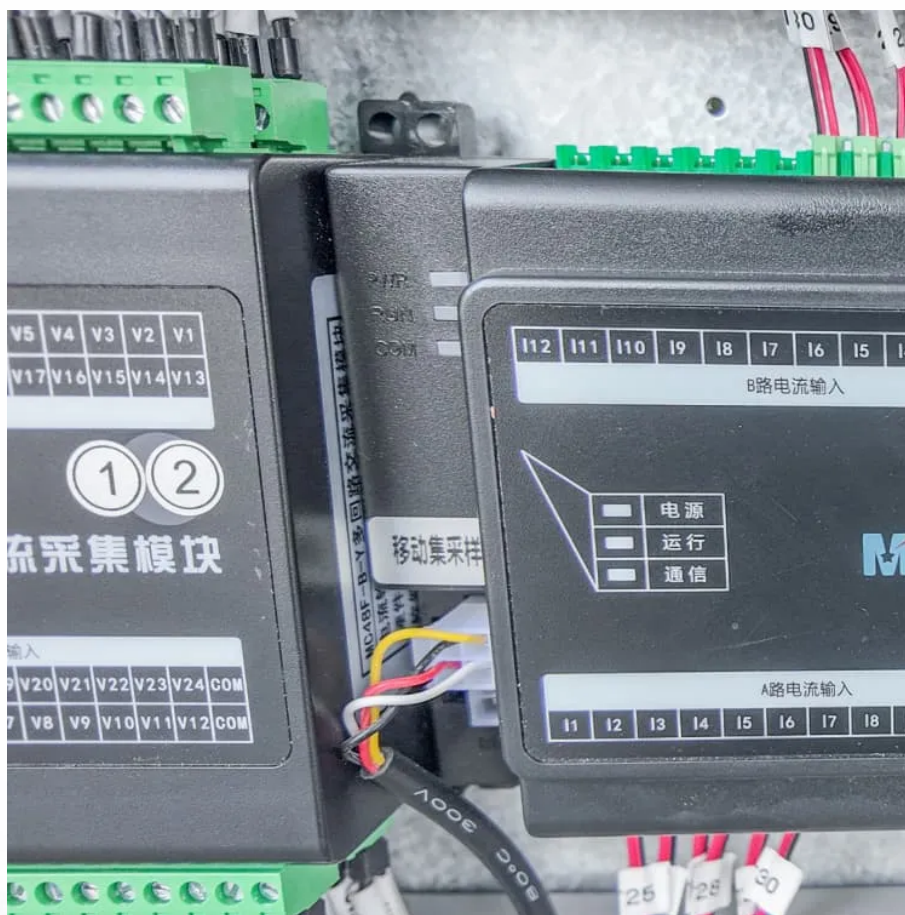




SolarMax Pro Energy Storage Systems

Communication base station weak current equipment





Communication base station weak current equipment



Low Voltage Communications , CSQ Electrical

Reliability and Continuity: We ensure uninterrupted operation of communication equipment and base stations by providing a stable and reliable power supply, preventing communication ...

Lightning and Surge Protection for Communication Station

Install lightning rods, grounding, surge protectors, shielding, and follow standards for effective communication station protection.



Optimizing the power supply design for communication base stations

The communication equipment will not be able to function if the communication power system fails, which will cause the communication system to be interrupted and cause a ...

Research on the application of weak power system power supply ...

In order to improve the stability and efficiency of power supply in 5G communication base station,



the application of weak current system in 5G base station is studied.



Maintenance of communication base station power supply system

If it is found during maintenance that the mains power supply of the base station is usually good, but the front-end equipment is often damaged for unknown reasons, the maintenance ...



Design of Wireless Communication Base Station Monitoring ...

With the rapid popularization of the network, under the increasingly complex network security situation and the increasingly prominent network security problems, network security ...



Lightning protection solution for telecom communication base stations

Lightning protection for telecom communication base stations involves a multi-layered approach, including direct and indirect lightning strike protection. This includes using ...





Machine learning for base transceiver stations power failure ...

The BTS infrastructure encompasses critical communication equipment, including transmission units that ensure signal propagation, baseband processing units for signal ...

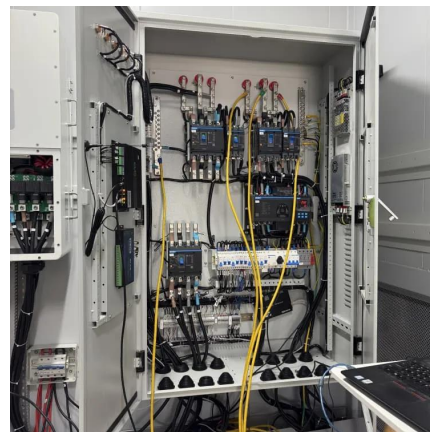


What is weak current system integration? What systems are ...

Weak current system engineering mainly refers to communication automation (CA), building automation (BA), office automation (OA), fire automation (FA) and security automation (SA), ...

Low Voltage Communications , CSQ Electrical

Reliability and Continuity: We ensure uninterrupted operation of communication equipment and base stations by providing a stable and reliable power supply, ...



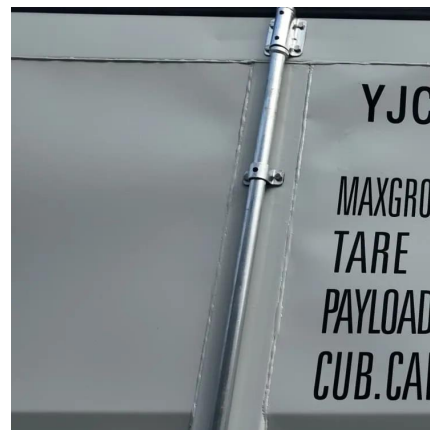
Energy-saving design and implementation in metro weak ...

It is proposed that the five weak current systems, namely platform doors, communication systems, signals, integrated monitoring and automatic fare collection, should adopt a backup



TELECOM SITES POWER CONTROL & MANAGEMENT

Across a network of base stations, you'll find a variety of different equipment and power sources available to keep the network up and running.



Quick guide: components for 5G base stations and antennas

Base stations A 5G network base-station connects other wireless devices to a central hub. A look at 5G base-station architecture includes various equipment, such as a 5G ...

Unraveling the Mysteries of Cell Towers and Base ...

In the ever-evolving landscape of mobile communications, understanding the intricacies of cell sites, cell towers, and base stations is crucial. These terms, ...



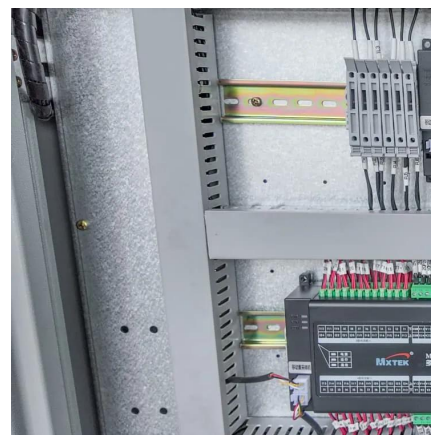


Understanding Strong Current (Power) and Weak Current ...

Common voltages in weak current systems include 5V, 12V, and 24V, often found in network cables, electronic devices, and communication lines. For example, household data cables and ...

Telecom Base Station Power System Solution

In order to ensure the continuity and efficiency of communication services, the power system of telecommunications base stations needs to have high reliability, stability and high efficiency to ...



transceiver station

A transceiver station, also known as a base station or cell site in the context of mobile communications, is a critical component in wireless communication networks. Its ...

Mobile communication base station tower-Junhao Technology

What is a vehicle mounted base station? Simply put, a vehicle mounted base station is the installation of base station equipment on a vehicle to make the base station "move". It is not ...



Base station subsystem

The base transceiver station, or BTS, contains the equipment for transmitting and receiving radio signals (transceivers), antennas, and equipment for encrypting and decrypting ...



What is weak current system integration? What ...

Weak current system engineering mainly refers to communication automation (CA), building automation (BA), office automation (OA), fire automation (FA) ...



Contact Us

For catalog requests, pricing, or partnerships, please visit:
<https://www.bringmethehorizon.eu>