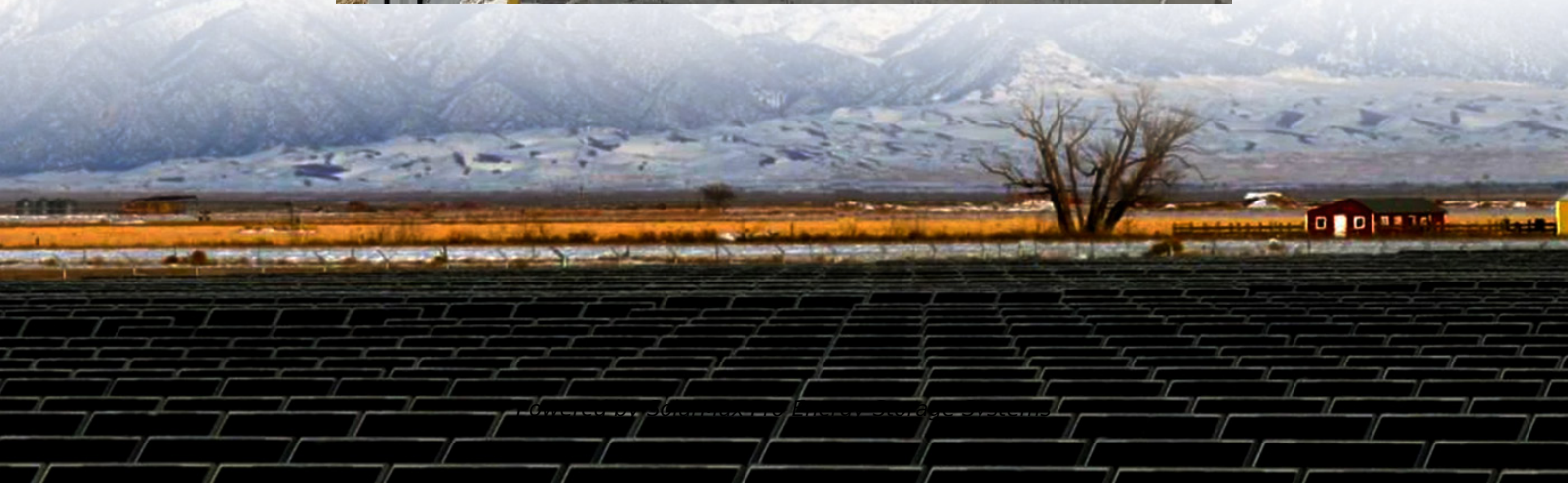




SolarMax Pro Energy Storage Systems

Communication 5g signal base station shuts down in the middle of the night





Overview

Why is China putting a 5G base station to sleep?

What many people don't realise, though, is that it's also expending a lot more energy for Chinese telecom companies. At the beginning of August, a China Unicom branch announced that it would put some of its ZTE 5G base stations to sleep between 9pm and 9am to reduce electricity costs in the city of Luoyang.

Do 5G base stations use more energy than 4G?

A recent white paper from telecom equipment maker Huawei illustrates the problem: 5G base stations use up to three-and-a-half times more energy than 4G infrastructure. Part of the problem is that this new generation of mobile connectivity requires more densely placed base stations.

How do engineers design 5G base stations?

Engineers designing 5G base stations must contend with energy use, weight, size, and heat, which impact design decisions. 5G New Radio (NR) uses Multi-User massive-MIMO (MU-MIMO), Integrated Access and Backhaul (IAB), and beamforming with millimeter wave (mmWave) spectrum up to 71 GHz.

What is the difference between 4G and 5G?

For example, 4G radios are always on (e.g., transmitting reference signals to detect users), even when traffic levels don't warrant it, such as in the middle of the night. 5G base stations can analyze traffic patterns and determine periods of low data-traffic, when it may be suitable to shut down into a "sleep mode."

What does 5G NR mean for gnodeb?

5G NR brings fundamental changes to the gNodeB's power amplifier (PA) and power-supply unit (PSU). These changes directly affect operators' capital expenditures (capex), operational expenditures (opex), and their ability to



provide the coverage and quality that customers demand.

Does 5G gnodeb need a heat sink?

A power-supply unit suitable for 5G gNodeB installations requires a heat sink. Power consumption is one major reason for these changes. Electricity currently is 5% to 6% of a mobile operator's opex, according to MTN Consulting [Ref. 1].



Communication 5g signal base station shuts down in the middle of t

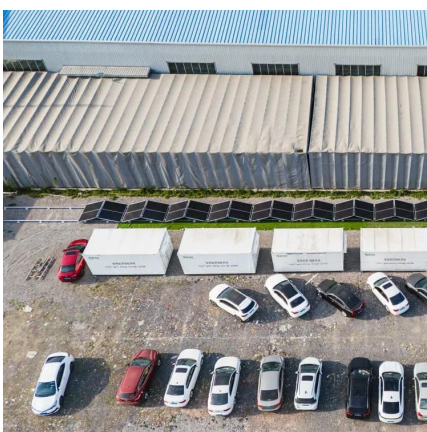


Look Before You Leap: Secure Connection Bootstrapping for ...

The communication overheads and computational delays of these signature schemes and authentication protocols will be further aggravated in 5G networks since 5G base-stations use ...

Why does 5g base station consume so much power and how to ...

5G base stations use high power consumption and high RF signals, which require more signal processing for digital and electromechanical units, and also put greater pressure ...



How much power does a 5G base station consume? It is rumored ...

The high power consumption of 5G base stations is also one of the reasons why 5G communication is difficult to spread widely. There are even rumors that 5G will be shut down ...

A Secure Transmission Strategy for Smart Grid Communications ...

As the number of Internet of Things (IoT) devices in smart grids grows, security issues arise,



including eavesdropping. The fifth generation (5G) wireless technologies are the driving force ...



The three major operators couldn't bear it, and the chairman of ...

By shutting down some base stations in the middle of the night, energy consumption and operating costs can be greatly reduced while ensuring the basic ...



Amazon Echo Keeps Turning Off: 4 Known Issues (Solved)

Amazon's Echo Dot has been one of the most popular in-home AI devices since it first hit the scene in 2016. But, like most new technology, it does come with its own set of ...



Machine Learning and Analytical Power Consumption ...

Abstract--The energy consumption of the fifth generation (5G) of mobile networks is one of the major concerns of the telecom industry. However, there is not currently an accurate and ...





Optimal configuration of 5G base station energy storage ...

The high-energy consumption and high construction density of 5G base stations have greatly increased the demand for backup energy storage batteries. To maximize overall ...

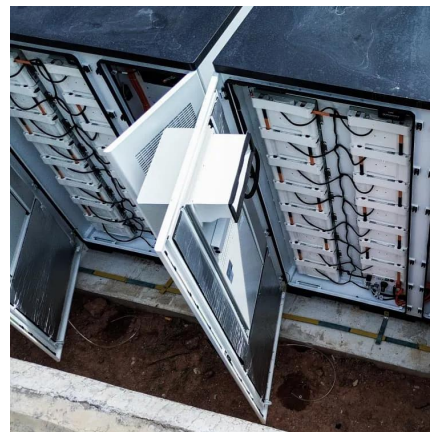


Why does the mobile network go down during a power outage?

So, if you're one of the few who maintains coverage, you may have a 4G or 5G signal but still be unable to browse. It's a mirage, as the network only allows essential services ...

Why does 5g base station consume so much power ...

5G base stations use high power consumption and high RF signals, which require more signal processing for digital and electromechanical units, ...



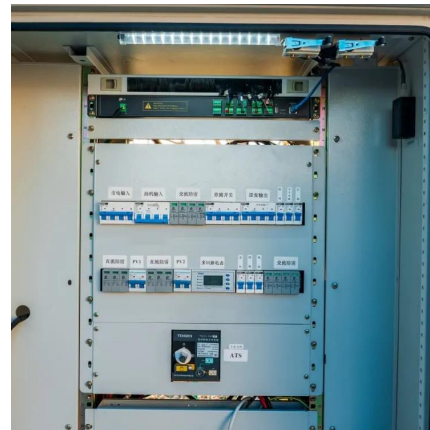
A User-Driven Sleep and Wake-Up Technology for Energy ...

Abstract: As the primary source of energy consumption in communication networks, the power usage of 5G base station (BS) is a significant concern. The sleep mode (SM) of BS can be ...



A User-Driven Sleep and Wake-Up Technology for Energy-Efficient 5G

Abstract: As the primary source of energy consumption in communication networks, the power usage of 5G base station (BS) is a significant concern. The sleep mode (SM) of BS can be ...



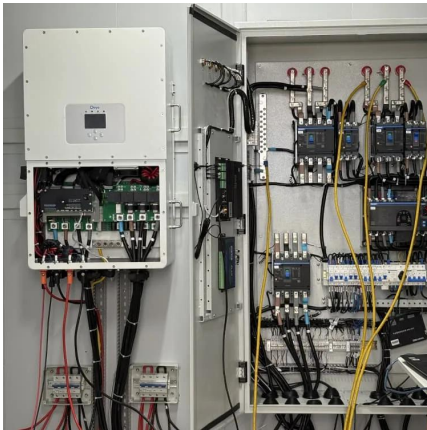
Quick guide: components for 5G base stations and antennas

Base stations A 5G network base-station connects other wireless devices to a central hub. A look at 5G base-station architecture includes various equipment, such as a 5G ...

Verizon outage or service down? Current problems and outages

Verizon offers mobile and landline communications services, including broadband internet and phone service. Verizon Wireless is a wholly owned subsidiary of Verizon.





How a 5G cell tower works , Deutschland spricht über 5G

Base stations, or mobile communications base stations, are stationary radio or mobile communications installations essentially consisting of two elements: (1) ...

Size, weight, power, and heat affect 5G base station ...

An example being considered during this time is to power down the radio in the range of 5 msec to 100 msec, and then enable it to see if there are ...



Chinese carrier exec says no need to be surprised by nighttime ...

A recent move by a branch of China Unicom to put some of its 5G base stations to sleep at night in order to save power has attracted widespread attention. In response, the ...

Mobile Communication Network Base Station Deployment Under 5G

This paper discusses the site optimization technology of mobile communication network, especially in the aspects of enhancing coverage and optimizing base station layout. ...



5G base stations consume so much power that operators are ...

Recently, Unicom Branch has turned on the deep sleep function in the no-load state at different times for three different base station radio frequency unit devices (AAU) that have been ...



Types and Applications of Mobile Communication ...

Mobile communication base station is a form of radio station, which refers to a radio transceiver station that transmits information between mobile ...



Chinese carrier exec says no need to be surprised by nighttime 5G base

A recent move by a branch of China Unicom to put some of its 5G base stations to sleep at night in order to save power has attracted widespread attention. In response, the ...





Size, weight, power, and heat affect 5G base station designs

An example being considered during this time is to power down the radio in the range of 5 msec to 100 msec, and then enable it to see if there are any active devices within ...



Why 5G cell towers go down when there is power outage? Does it

Say there's a power outage during extreme weather or maintenance events. Cell towers have batteries and backup generators that run on diesel, propane. However, they don't ...

Contact Us

For catalog requests, pricing, or partnerships, please visit:
<https://www.bringmethehorizon.eu>