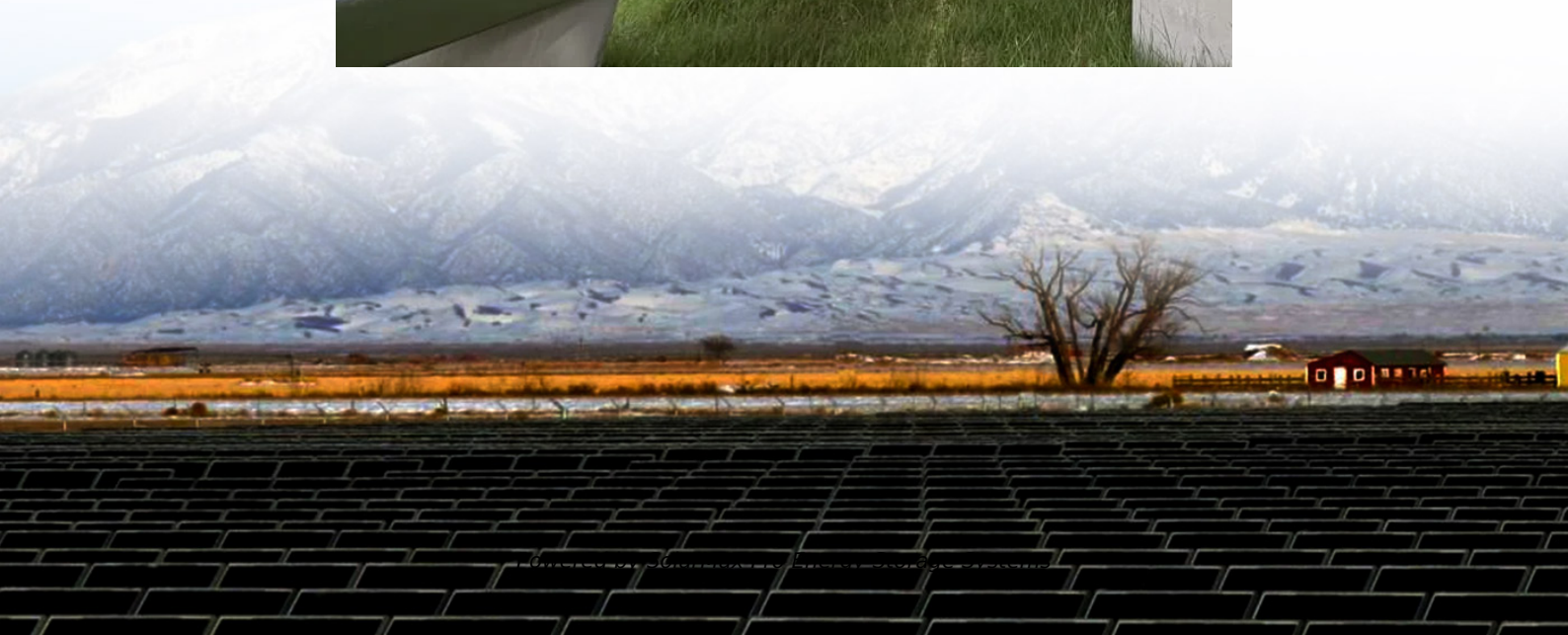
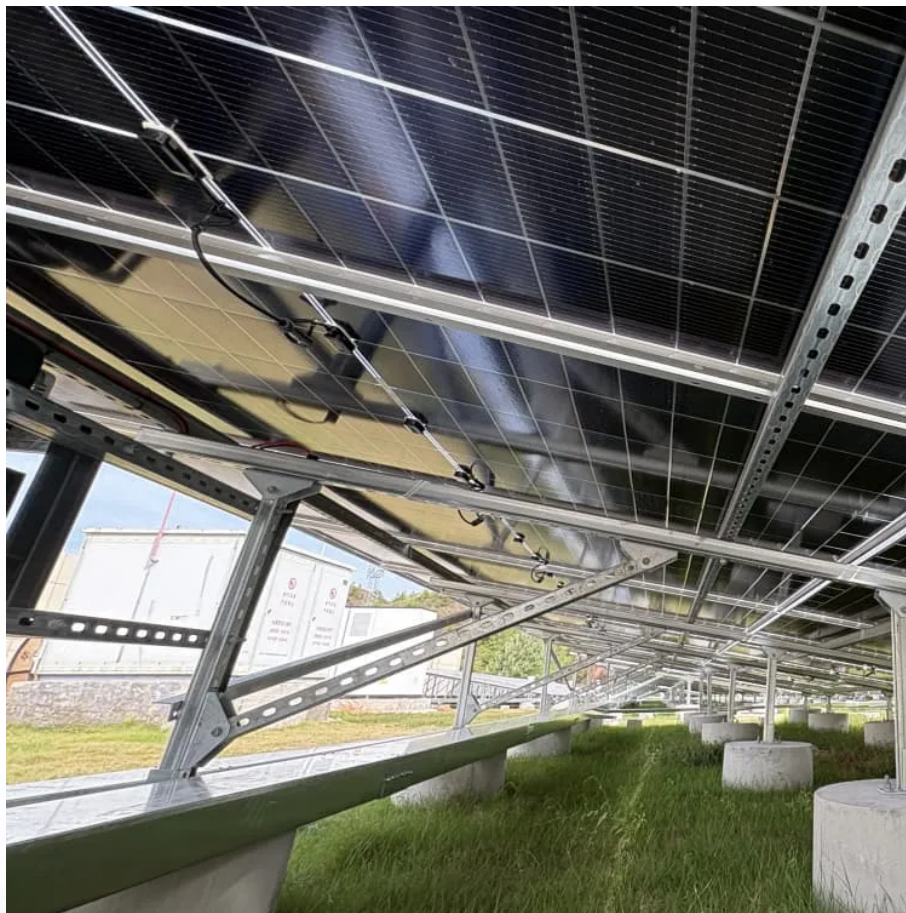




SolarMax Pro Energy Storage Systems

Commonly used batteries for base stations





Overview

What types of batteries does battery station carry?

Battery Station carries an extensive line of Duracell Plus and Duracell Ultra alkaline batteries as well as lithium batteries to fit all of your consumer electronics. We also offer their NiMH rechargeable batteries and chargers to save you money over a wide range of applications, as well as specialty batteries in different technologies.

What type of batteries are used in the military?

The military uses the BA-5588A for a primary battery and the BB-388 for a rechargeable battery in the PRC-68 family. BA-5588A and BB-388 are the specific types of batteries used in the military for the PRC-68 family.

Which type of battery is best?

Lithium-Ion Batteries: Gaining popularity due to their high energy density, longer lifespan, and lower weight. They are particularly effective in applications requiring frequent cycling. Nickel-Cadmium (NiCd) Batteries: Known for their robustness and ability to perform well in extreme temperatures.

What are the different types of batteries?

They come in two main types: Flooded Lead-Acid (FLA): Require regular maintenance and electrolyte checks. Valve-Regulated Lead-Acid (VRLA): Maintenance-free and sealed, making them ideal for remote locations. Lithium-Ion Batteries: Gaining popularity due to their high energy density, longer lifespan, and lower weight.

What are the different types of Telecom batteries?

These batteries are integral to data centers, cell towers, and other communication infrastructures. There are several types of telecom batteries, each with unique characteristics suited for different applications: Lead-Acid



Batteries: Commonly used due to their reliability and cost-effectiveness. They come in two main types:.

Which battery is best for a remote location?

Valve-Regulated Lead-Acid (VRLA): Maintenance-free and sealed, making them ideal for remote locations. Lithium-Ion Batteries: Gaining popularity due to their high energy density, longer lifespan, and lower weight. They are particularly effective in applications requiring frequent cycling.



Commonly used batteries for base stations



Can telecom lithium batteries be used in 5G telecom base stations?

It is easy to install and provides reliable backup power. Conclusion In conclusion, telecom lithium batteries can indeed be used in 5G telecom base stations. Their high energy ...

5 Types of Batteries and Applications

There are many different types of Lithium battery, but among all the lithium-ion batteries are the most commonly used. You can find these lithium batteries being used in different forms ...



Player-owned starbases

Player-owned starbases (often shortened to "starbase" or "POS") are a collection of structures that player corporations may anchor in the orbit of moons. Starbases are not to be ...

What types of batteries are commonly used in a ...

As a supplier of Battery Storage System Stations, I've seen firsthand how important it is to choose



the right batteries for these systems. In ...

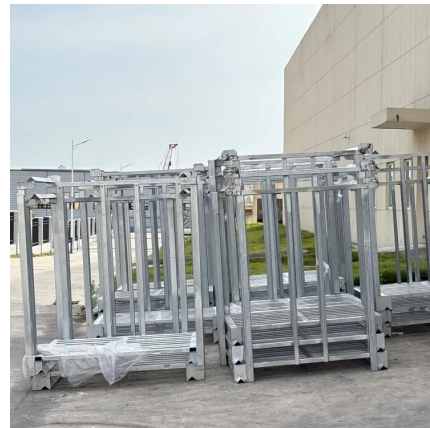


Environmental feasibility of secondary use of electric vehicle ...

The choice of allocation methods has significant influence on the results. Repurposing spent batteries in communication base stations (CBSs) is a promising option to ...

What Batteries Are Used in Telecom Towers?

The most commonly used batteries include lead-acid, lithium-ion, nickel-cadmium, and nickel-metal hydride batteries, each offering unique advantages suited to different ...



Understanding Backup Battery Requirements for Telecom Base Stations

Telecom base stations require reliable backup power to ensure uninterrupted communication services. Selecting the right backup battery is crucial for network stability and ...



What types of batteries are commonly used in a Battery Storage ...

...

As a supplier of Battery Storage System Stations, I've seen firsthand how important it is to choose the right batteries for these systems. In this blog, I'll walk you through ...



[Everything You Need to Know About Robot Batteries](#)

3. Types of Robot Batteries There are several types of batteries used in robots, each with its advantages and limitations. The most common types include: Lithium-Ion (Li-ion) ...

[Battery Management Systems for Telecom Base ...](#)

Telecom base stations are strategically distributed across urban, suburban, and remote locations to provide uninterrupted wireless service. ...



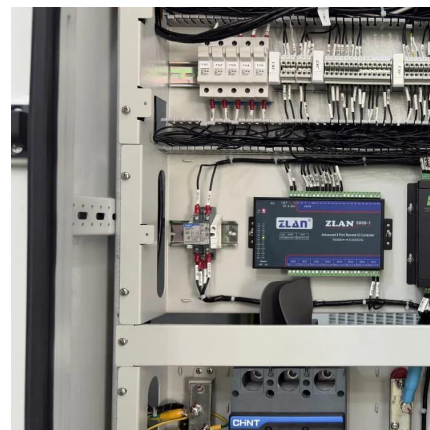
What are base station energy storage batteries used for?

WHAT TYPE OF BATTERIES ARE USED IN BASE STATIONS? Base stations typically utilize varying types of batteries, with lead-acid batteries and lithium-ion batteries ...



How about base station energy storage batteries

Base stations primarily utilize lithium-ion and lead-acid batteries. Lithium-ion batteries are favored for their higher energy density, longer ...



Understanding Backup Battery Requirements for ...

Telecom base stations require reliable backup power to ensure uninterrupted communication services. Selecting the right backup battery is ...

5G means Batteries. A lot of them

More specifically, base stations batteries are most often composed of Lithium Iron Phosphate (LiFePO₄, or LFP) cells. Compared to, for instance, the Lithium ...





Which optical modules are commonly used in 4G base stations

In this blog, Nufiber will talk about 4G base stations and common types of optical modules. The base station can be divided into two modules: the RRU for transmitting signals ...

[Comprehensive Guide to Telecom Batteries](#)

This comprehensive guide will delve into the types of telecom batteries, their applications, maintenance tips, and the latest advancements in battery technology.

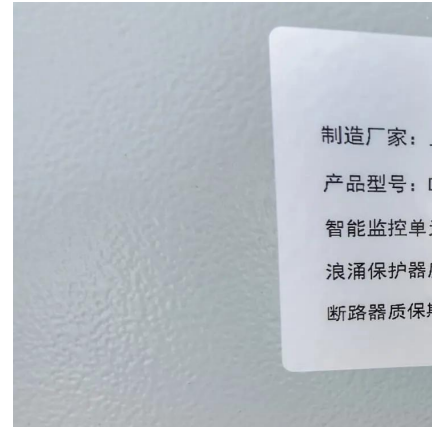


[What batteries are used in solar + storage projects?](#)

But lithium-ion is not the only--or best--choice out there for batteries used in solar-plus-storage installations. Here's a brief rundown of the ...

[What Are Base Station Antennas? Complete Guide](#)

Base station antennas are also known as cell site antennas and cellular antennas, and they are typically mounted on a tower or rooftop and ...



What Are the Best Lithium Batteries for Base Stations?

While NMC offers higher energy density, LiFePO₄ batteries dominate base station deployments due to their thermal stability--a critical factor when ambient temperatures regularly exceed ...

Choosing the Right Battery for Base Stations: LiFePO₄ vs. Lead ...

Explore the critical considerations in selecting batteries for base stations. This comparison between LiFePO₄ and lead-acid batteries delves into power consumption, backup time, and ...



Which Batteries Can Be Used as Backup Power Sources for ...

Several types of batteries can be used as backup power sources for communication base stations. The choice of battery depends on factors such as the power requirements of the base ...



Telecom Battery Backup System , Sunwoda Energy

A telecom battery backup system is a comprehensive portfolio of energy storage batteries used as backup power for base stations to ensure a reliable and stable power supply.



How about base station energy storage batteries , NenPower

Base stations primarily utilize lithium-ion and lead-acid batteries. Lithium-ion batteries are favored for their higher energy density, longer lifespan, and faster charging ...

Which Rack Batteries Are Most Reliable for Telecom Base Stations?

Base station power systems operate on tight voltage tolerances-- $\pm 2\%$ fluctuations can trigger equipment shutdowns. A 51.2V LiFePO4 rack battery maintains 44.8V-58.4V ...



Contact Us

For catalog requests, pricing, or partnerships, please visit:
<https://www.bringmethehorizon.eu>