



SolarMax Pro Energy Storage Systems

Can lithium batteries be used with a 220v inverter





Overview

Yes, you can connect an inverter to a lithium battery. Lithium batteries, particularly Lithium Iron Phosphate (LiFePO₄) batteries, are well-suited for use with inverters due to their high efficiency, lightweight design, and ability to deliver consistent power. What is a lithium battery for inverter?

Lithium offers unmatched performance, a longer lifespan, and better efficiency than traditional batteries. Whether you're setting up a home backup system, solar power solution, or mobile energy unit, this guide will walk you through everything you need to know about lithium batteries for inverters. Part 1.

Which battery should I use for my inverter?

When it comes to powering your inverter, there are a few alternative options to consider aside from lithium batteries. While lithium batteries have gained popularity due to their numerous advantages, they may not be the right choice for everyone. One alternative option is lead-acid batteries.

Should you use a lithium-ion battery for a home inverter?

A lithium-ion battery for a home inverter can significantly enhance your home's energy storage capabilities. This translates to more reliable power during outages and better management of renewable energy resources like solar panels. Lithium-ion batteries require less maintenance and have a longer lifespan compared to traditional batteries.

Can a solar inverter be used with a lithium battery?

Integrating a solar inverter with a lithium battery can take your renewable energy setup to the next level. This combination allows for better energy storage, improved efficiency, and greater resilience during power outages. LiFePO₄ batteries are particularly well-suited for solar applications because of their thermal stability and long cycle life.

Can a lithium battery be used with a sine wave inverter?



Some examples include pure sine wave and modified sine wave inverters. These inverters may work better with lithium-ion batteries. Understanding your inverter type is crucial to avoid potential issues down the line. The first step in installing a lithium battery for inverter with an existing inverter is to assess your current setup.

How do I install a lithium battery for inverter?

Understanding your inverter type is crucial to avoid potential issues down the line. The first step in installing a lithium battery for inverter with an existing inverter is to assess your current setup. This includes evaluating the condition of your inverter and ensuring it meets the necessary specifications for lithium-ion batteries.



Can lithium batteries be used with a 220v inverter



[Battery To Inverter Wire Size Calculator: What Size ...](#)

The battery to inverter wire size calculator below will provide the size of the Copper wire that you need in AWG (American Wire Gauge) and ...

CAN Definition & Meaning

The use of can to ask or grant permission has been common since the 19th century and is well established, although some commentators feel may is more appropriate in formal contexts. ...



CAN definition in American English , Collins English Dictionary

You use can to indicate that someone has the ability or opportunity to do something. Don't worry yourself about me, I can take care of myself. I can't give you details because I don't actually ...

Can , ENGLISH PAGE

"Can" is one of the most commonly used modal verbs in English. It can be used to express ability or opportunity, to request or offer permission,



and to show possibility or impossibility.

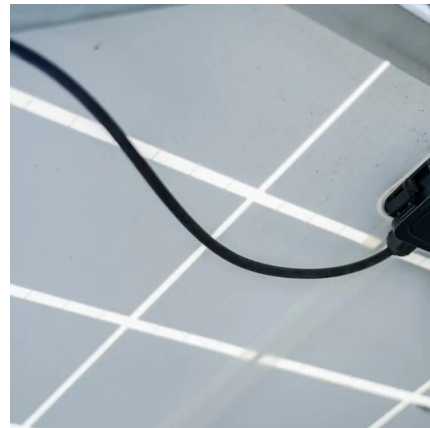


[Do Lithium Batteries Need a Special Inverter?](#)

Lithium batteries, including lithium-ion batteries and lithium iron phosphate (LiFePO4) batteries, don't necessarily require a special inverter specifically ...

[Leaptrend 1000W 12V to 220V/230V Pure Sine Wave ...](#)

Leaptrend 1000/2000 Watt Power Inverter for Lithium Batteries, DC 12V to 220V/230V AC Off-Grid Solar Pure Sine Wave Inverter on RV, Semi Truck, ...



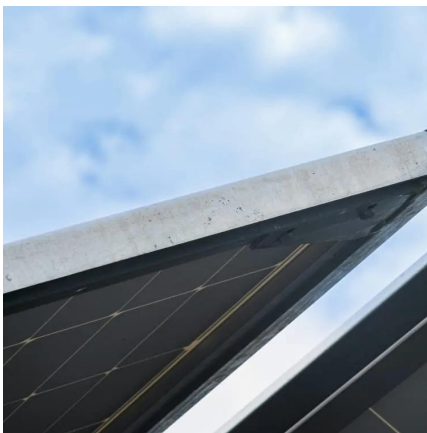
[Can all inverters use lithium batteries?](#)

Not all inverters are designed to work with lithium batteries, so it's essential to ensure that your chosen inverter can support this type of battery. The first thing you need to ...



Number of Lithium Batteries to Supply a 5kW Inverter ...

Step1 - List what will a 5000 watt inverter run
Start by listing all the devices you plan to run with the inverter and adding up their power ...



[Can we use a lithium battery for an inverter?](#)

:- Yes, you can use a lithium battery for an inverter, and in many ways, it's a better choice than traditional lead-acid batteries. Lithium ion ...

Can Lithium Batteries Power a 220V Inverter A Complete Guide ...

Summary: Lithium batteries are fully compatible with 220V inverters, offering superior energy storage for solar systems, home backup power, and industrial applications. This guide ...



Compatibility of Lithium-Ion Batteries with Existing ...

This blog post will walk you through the essentials of lithium-ion batteries, their benefits, and the steps to seamlessly integrate them with your ...



Batteries For Inverters (Complete Guide)

Best Batteries For Inverters Although there is a range of home energy storage batteries available on the market, you need to find the right type and size that ...



can

Despite the insistence by some, that can means only "to be able" and may means "to be permitted," both are regularly used in seeking or granting permission: Can (or May) I borrow ...

Can I Use an Inverter to Run a Heater?

A 2000 watt inverter can power a 1500 watt heater, but its run time will depend on the battery capacity. A 300ah lead acid battery will last one hour if the heater draws 1500 watts ...





POSSIBLE ? Run 220V AC Appliances with 12v 180W Solar Panel without Battery

Today i will test if we can run 220V AC Appliances Directly on 12v 180W Solar Panel without Battery using 220V UPS InverterMy Socials - <https://linktr.ee/m>

Can Lithium Batteries Work With Any Type of Inverter?

When setting up solar energy systems or home energy storage, a common question arises: Are lithium batteries compatible with all inverters? ...



Understanding Battery Capacity and Inverter Compatibility

How Long Can a 100 Ah Battery Run a 1000W Inverter? To estimate how long a battery can run an inverter, we need to consider the power draw and the battery's capacity. ...

CAN , English meaning

Can is usually used in standard spoken English when asking for permission. It is acceptable in most forms of written English, although in very formal writing, such as official instructions, may ...



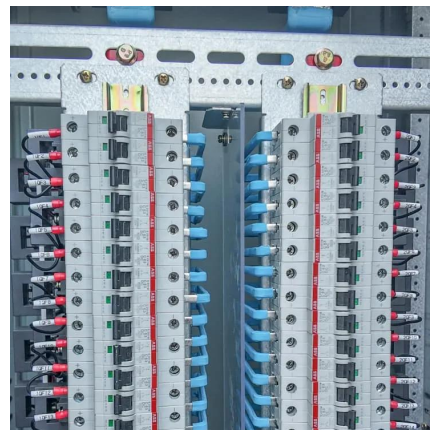
[Livsol 500 VA with 60 Months Warranty Solar ...](#)

Livsol Smart SolarWall Mounted Inbuilt Lithium Battery (LIFEPO₄ battery) Inverter are highly integrated, deep cycle backup power solutions for your solar home ...



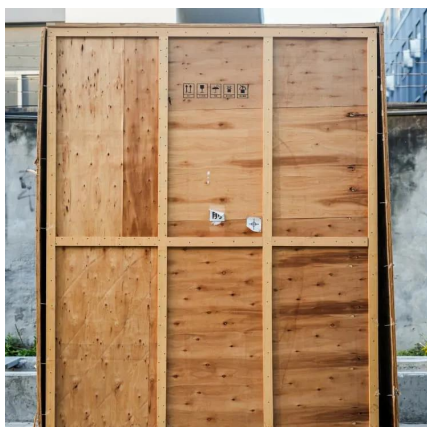
Lithium Batteries for Inverters: The Future of Energy ...

Lithium batteries are transforming the landscape of renewable energy and backup power solutions, particularly when used with inverters. This comprehensive ...



How to Connect an Inverter with Double Batteries at your Home

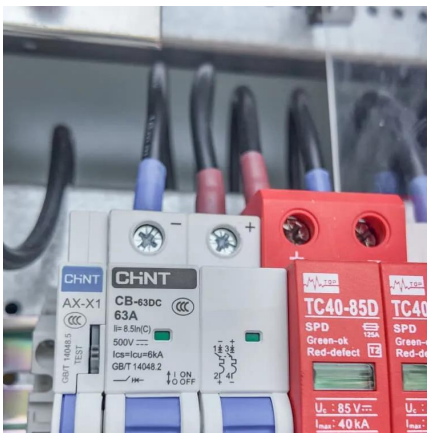
Details:- To connect an inverter with double batteries at home, you will need to create a series connection or a parallel connection between the batteries, depending on the inverter's





Lithium Battery for Inverter: Pros, Specs, and Tips

Can I replace my lead-acid battery with lithium in my inverter system? Yes, but you must ensure your inverter and charger are compatible ...



Importance of Compatibility Between Inverter and ...

Lithium batteries are known for their longevity, but their lifespan can be significantly shortened if paired with an incompatible inverter. Inverters ...

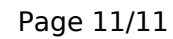
1500 Watt Inverter: Battery Sizing Guide

How many batteries do I need for a 1500-watt inverter? In short, For 1500 watt inverter you'll need two 12V 100Ah lead-acid batteries connected in ...



"Can a Lithium Battery Be Used with an Inverter That Doesn't ...

In this video, we discuss whether it's possible to use a lithium battery with an inverter that does not support a Battery Management System (BMS). We'll cover the potential risks, safety



Contact Us

Powered by SolarMax Pro Energy Storage Systems