



SolarMax Pro Energy Storage Systems

Botswana 5G base station power supply situation





Overview

Why are 5G base stations important?

The denseness and dispersion of 5G base stations make the distance between base station energy storage and power users closer. When the user's load loses power, the relevant energy storage can be quickly controlled to participate in the power supply of the lost load.

Why is Botswana integrating solar energy into the National Grid?

Integration This integration of solar energy into the national grid reflects Botswana's growing focus on renewable energy. "The connection of solar power stations signifies a national commitment to diversifying electricity production sources," the report stated. While local electricity production surged, imports declined sharply.

What factors affect the energy storage reserve capacity of 5G base stations?

This work explores the factors that affect the energy storage reserve capacity of 5G base stations: communication volume of the base station, power consumption of the base station, backup time of the base station, and the power supply reliability of the distribution network nodes.

How much energy does Botswana need?

Botswana's peak demand is about 640 MW, with generation coming from one unit at Morupule B, as well as diesel plants and a new 50 MW solar installation. Botswana wants to cooperate with Mozambique in energy.

Why is Botswana achieving energy self-sufficiency?

According to a new report by Statistics Botswana, the growth underscores the country's strides towards energy self-sufficiency that is driven primarily by enhanced output from its key power stations.

Is 5G base station energy storage a reliable power supply?



Paper mentioned that under the premise of ensuring the reliability of its power supply, 5G base station energy storage has the feasibility of participating in the power supply of other electrical loads on the same feeder after a failure occurs in the relevant substation power supply area.



Botswana 5G base station power supply situation



Building Better Power Supplies For 5G Base Stations

Building Better Power Supplies For 5G Base Stations by Alessandro Pevere, and Francesco Di Domenico, Infineon Technologies, Villach, Austria according to Ofcom, the UK's telecoms ...

5G Base Station Power Supply 2000W 3000W

5G Base Station Power Supply System. Reliable & Scalable Power for Next-Generation 5G Networks. 5G Communication power supply, IP65. Reliable & Scalable Backup Power.



Load Forecasting of 5G Base Station in Urban Distribution Network

5G is the abbreviation of the 5th generation mobile communication technology. China is one of the earliest countries in the world to implement 5G commercially. The application of 5G network ...

What are the power delivery challenges with 5G to maximize

The two primary power delivery challenges with 5G new radio (NR) are improving operational



efficiency and maximizing sleep time. For example, Ericsson estimates that 94% of ...



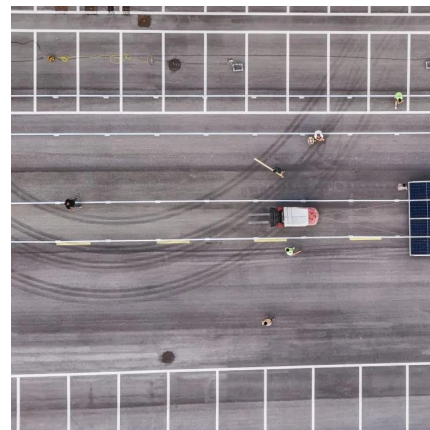
Batswana to Pay More as Government Plans Power Tariff Hike

The government is taking immediate steps to stabilize power supply. "BPC is in the process of recovering Unit 2 and Unit 4 at Morupule B. Unit 4 is expected to be back in service ...



5g base station power supply solution

Under the impact of these problems, 5g base station power supply with maintenance free, high reliability, diverse installation methods and high IP protection level is one of the best solutions ...



The business model of 5G base station energy storage ...

However, pumped storage power stations and grid-side energy storage facilities, which are flexible peak-shaving resources, have relatively high investment and operation costs. 5G base ...





Blackout Blues » TheVoiceBW

On March 22, 2025, various areas across the country were plunged into darkness as Botswana Power Corporation (BPC) reintroduced rotational load shedding to match supply ...



[CTECHI 5G Telecom Base Station Battery 48V 50Ah Power](#)

CTECHI 5G Telecom Base Station Battery 48V 50Ah Power System Solution UPS Backup Battery
The CTECHI 50Ah 48V LiFePO4 Battery is a high-performance backup power solution ...



[Study on Power Feeding System for 5G Network](#)

High Voltage Direct Current (HVDC) power supply
HVDC systems are mainly used in telecommunication rooms and data centers, not in the Base station. With the increase of ...



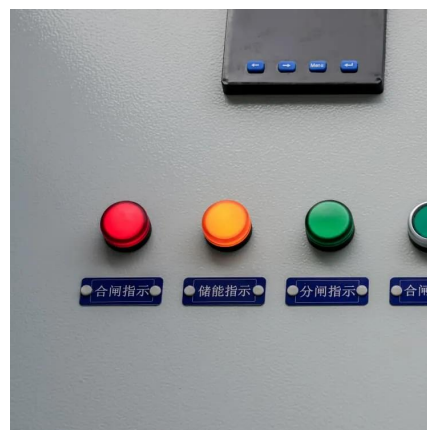
Government to address power crisis

Government is working on alleviating the power crisis the country is currently experiencing owing to low domestic electricity supply as well as the challenges of imported ...



Botswana's Electricity Generation Surges As Imports Decline

"The connection of solar power stations signifies a national commitment to diversifying electricity production sources," the report stated. While local electricity production ...

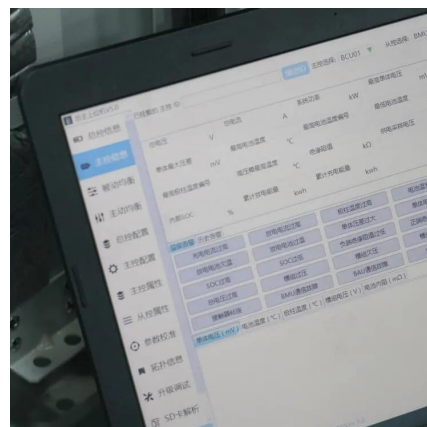


Botswana Power Supply Constraints To Ease By Mid-June

The situation of power supply in Botswana is expected to gradually improve with recovery of Morupule B units and on-going efforts to secure power imports from South Africa ...

Blackout Blues

Supply constraints expected to ease by mid-June 2025. As the Morupule B Power Station continues to struggle with operational challenges, consumers should brace for long, ...





Dispatching strategy of base station backup power supply ...

1. Introduction Since China put 5G into commercial use at the end of 2019, the development and construction of 5G base stations have been developed on a large scale. By June 2022, China ...

Batswana to Pay More as Government Plans Power Tariff Hike

The Government, through the Ministry of Minerals and Energy, has provided an update on the current electricity supply situation and the measures being taken to ensure ...

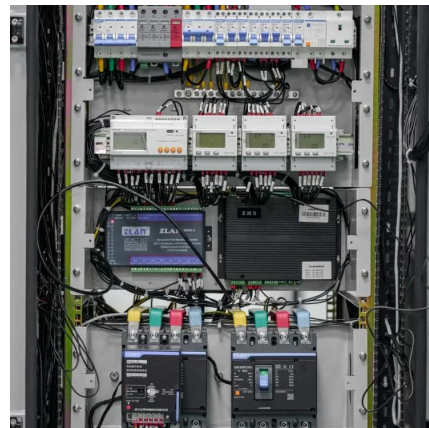


Selecting the Right Supplies for Powering 5G Base Stations ...

These tools simplify the task of selecting the right power management solutions for these devices and, thereby, provide an optimal power solution for 5G base stations components.

Botswana Plans 615MW Coal Plant Amid Power Supply Concerns

Botswana is actively considering the construction of a new 615-megawatt coal-fired power plant, a move driven by persistent generation challenges at its existing Morupule B ...



(PDF) Dispatching strategy of base station backup power supply

With the mass construction of 5G base stations, the backup batteries of base stations remain idle for most of the time. It is necessary to explore these massive 5G base ...



Trends and Innovations in Base Station Power Supply

With the rapidly evolving landscape of telecommunications, the power supply to the base station is a key component, facilitating seamless connectivity and network availability.
...



Botswana seeks new Eskom power deal as supply crisis deepens

Botswana wants to secure 200 MW of supply from South Africa, and it's issuing a tender for 1.5 GW in renewable energy on Friday. It's also putting together a rescue plan for ...





Distribution network restoration supply method considers 5G base

This work explores the factors that affect the energy storage reserve capacity of 5G base stations: communication volume of the base station, power consumption of the base ...



Contact Us

For catalog requests, pricing, or partnerships, please visit:
<https://www.bringmethehorizon.eu>