



SolarMax Pro Energy Storage Systems

Belgian solar base station





Overview

Princess Elisabeth Antarctica, located on Utsteinen Nunatak in Queen Maud Land, is a Belgian scientific polar research station, which went into service on 15 February 2009.

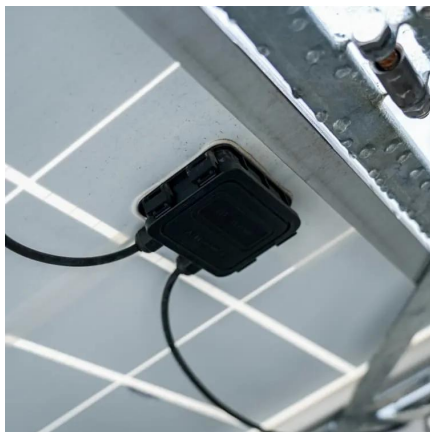
The station, designed, built and operated by the , is the first polar base that combines eco-friendly construction materials, clean and .

• • • • 2011-07-08 at the

Princess Elisabeth Antarctica, located on Utsteinen Nunatak in Queen Maud Land, is a Belgian scientific polar research station, which went into service on 15 February 2009.



Belgian solar base station



Installation de panneaux solaires et de batteries en Belgique

Installation de panneaux solaires et de batteries en Belgique. Demandez un devis gratuit pour des panneaux solaires, une batterie, une pompe à chaleur, une station de recharge

Belgium building zero-emission Antarctic station , Reuters

Belgium is building the first ever zero-emission polar station in the Antarctic, powered by solar panels and wind turbines and designed to have minimal impact on the ...



[List of the 75 largest PV-Installers Belgium \[2025\]](#)

List of 3 large PV-Installers in Belgium Belgium is experiencing a solar energy revolution. In the pursuit of a more sustainable future, solar ...

Life at Antarctica's first zero-emissions research station

The Princess Elisabeth Antarctica Research Station, a Belgian research station, is the only



base in Antarctica that doesn't generate any net ...



BELGIAN ANTARCTIC BASE: PRINCESS ELISABETH

Princess Elisabeth, the world's first "zero emission" polar station, stands now at 72°S 23°E on top of a granite ridge, north of the Utsteinen Nunatak in the Sør Rondane Mountains.



New garage for Belgian Antarctic station , Polarjournal

Before the closure of the Belgian "Princess Elisabeth Antarctica" station for winter, it was crucial for the BELARE team to finish the construction of the station's new garage. The ...



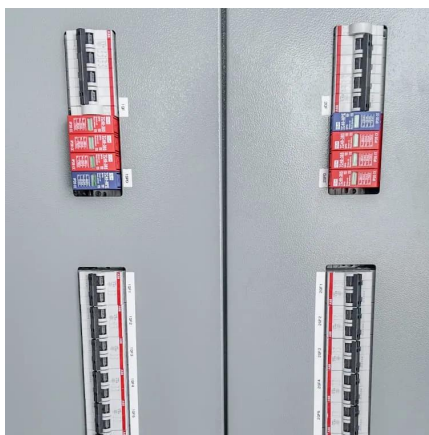
Princess Elisabeth Antarctica: An Energy Station

In February 2009, Belgium opened a zero emissions polar science station in Antarctica. [1] The Princess Elisabeth is an innovative energy station in an ...



Design of a 100% renewable energy based Belgian Polar Station ...

Located on one side of the roof of the Princess Elisabeth Station, the thermal solar panels are used to melt the snow and heat the water to be used in the station's bathrooms and kitchen.

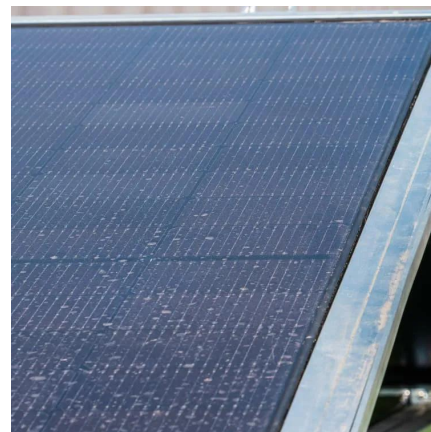


[523-BELGIAN ANTARCTIC BASE : PRINCESS ELISABETH](#)

The International Polar Foundation (IPF), led by the civil engineer and explorer Alain HUBERT, was commissioned in 2004 by the Belgian Federal government to design, construct and ...

Life at Antarctica's first zero-emissions research station

The Princess Elisabeth Antarctica Research Station, a Belgian research station, is the only base in Antarctica that doesn't generate any net emissions. Located in the East ...



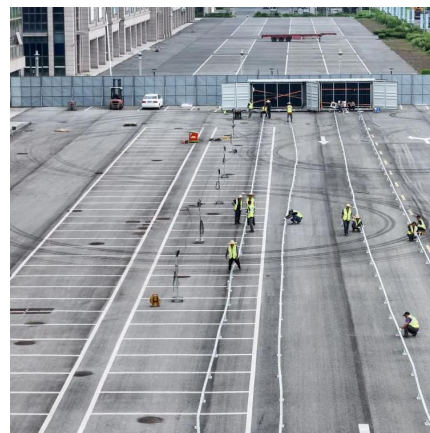
Princess Elisabeth Antarctica Research Station Remains Icon of

Over two austral summer research seasons, from November 2007 to February 2009, the International Polar Foundation, with financial and in-kind help from its many private sector ...



[Princess Elisabeth Antarctica: An Energy Station](#)

In February 2009, Belgium opened a zero emissions polar science station in Antarctica. [1] The Princess Elisabeth is an innovative energy station in an inhospitable polar continent. [1] The ...

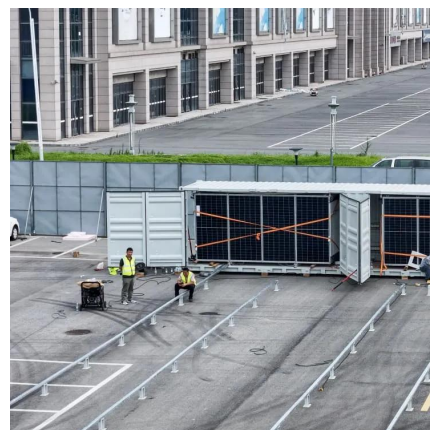


[Princess Elisabeth Antarctica Research Station ...](#)

Over two austral summer research seasons, from November 2007 to February 2009, the International Polar Foundation, with financial and in-kind help from ...

[Princess Elisabeth Antarctica Explained](#)

Princess Elisabeth Antarctica, located on Utsteinen Nunatak in Queen Maud Land, is a Belgian scientific polar research station, which went into service on 15 February 2009. History The ...



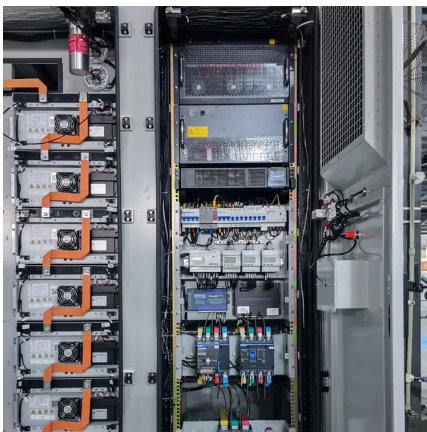


Design of a 100% renewable energy based Belgian ...

Located on one side of the roof of the Princess Elisabeth Station, the thermal solar panels are used to melt the snow and heat the water to be used in the ...

523-BELGIAN ANTARCTIC BASE : PRINCESS ...

The International Polar Foundation (IPF), led by the civil engineer and explorer Alain HUBERT, was commissioned in 2004 by the Belgian Federal ...



Belgian Antarctic Program

Belgium, along with ten other countries agreed to take part in this scientific exercise and established a research station named Base Roi Baudouin, on a floating ice shelf off the coast ...

Outdoor Solar System for Bts Telecom Base Station

EverExceed brings you Industry leading solution for powering Telecom Base Stations with or without solar power. EverExceed ESB and EDB series BTS solution can manage multiple ...



Optimal solar power system for remote telecommunication base stations

This paper aims to address both the sustainability and environmental issues for cellular base stations in off-grid sites. For cellular network operators, decreasing the operational ...



Venturing into new frontiers: a look at the new Princess Elisabeth

Once completed, the Princess Elisabeth Station will be the first functioning Belgian station in the Antarctic in more than four decades, and the scientific research that will be carried out there ...



[US and NATO military bases in Belgium](#)

Chievres Air Base is a United States Air Force operated airfield located 1.9 km east southeast of the Walloon town of Chièvres in the province of Hainaut, ...



Contact Us

For catalog requests, pricing, or partnerships, please visit:
<https://www.bringmethehorizon.eu>