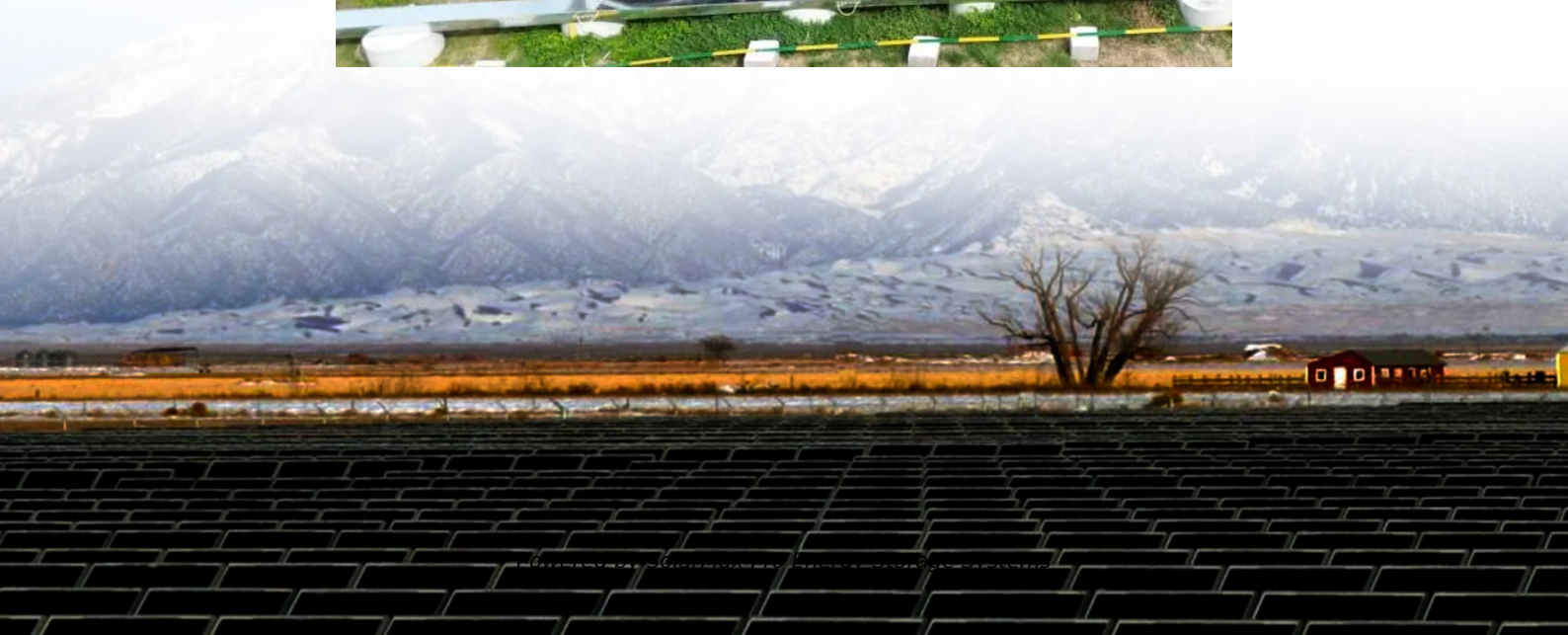




SolarMax Pro Energy Storage Systems

Battery device for communication base station





Overview

Which battery is best for telecom base station backup power?

Among various battery technologies, Lithium Iron Phosphate (LiFePO₄) batteries stand out as the ideal choice for telecom base station backup power due to their high safety, long lifespan, and excellent thermal stability.

What is a communication base station?

Communication base station setups will usually include a wide array of different technologies, including power supplies, data servers, head end, radio repeaters, and communication systems that allow for high-speed continuous information flow. It can also be used as part of a leaky feeder system in the communication network.

What makes a telecom battery pack compatible with a base station?

Compatibility and Installation Voltage Compatibility: 48V is the standard voltage for telecom base stations, so the battery pack's output voltage must align with base station equipment requirements. Modular Design: A modular structure simplifies installation, maintenance, and scalability.

What communication protocols do you use with a battery management system?

In this article, we go over the major communication protocols that you may use or find when working with a battery management system. When working with a BMS, you usually use a BMS IC. Depending on the BMS IC being used to control your BMS, you may need to connect to an external microcontroller or another external IC.

What is a cellular communication base station?

A cellular communication base station is an apparatus for transmitting and receiving electromagnetic waves in the radiofrequency (RF) range and it is the site through which cellular devices communicate with communication systems



deployed throughout the world.

How do you protect a telecom base station?

Backup power systems in telecom base stations often operate for extended periods, making thermal management critical. Key suggestions include:

Cooling System: Install fans or heat sinks inside the battery pack to ensure efficient heat dissipation.



Battery device for communication base station



DALY base station energy storage BMS solution for communication base

Provide comprehensive BMS (battery management system) solutions for communication base station scenarios around the world to help communication equipment companies improve the ...

What are base station energy storage batteries used for?

Innovations in battery technologies, such as lithium-sulfur or solid-state batteries, promise higher energy densities and improved lifespan, ...



The 200Ah Communication Base Station Backup Power Lead-acid Battery

GEM Battery GF series communication base station lead-acid batteries are used for telecom communication backup power supply, support multi-channel parallel connection, good ...

[Battery specifications for communication base stations](#)

CellWatt base station lithium battery module is widely used in communication base stations and



intelligent computer rooms due to its characteristics of integration, miniaturization, lightweight, ...



Improved Model of Base Station Power System for the ...

The optimization of PV and ESS setup according to local conditions has a direct impact on the economic and ecological benefits of the ...

What are base station energy storage batteries used for?

Innovations in battery technologies, such as lithium-sulfur or solid-state batteries, promise higher energy densities and improved lifespan, thereby enhancing the operational ...



Base Stations and Cell Towers: The Pillars of Mobile ...

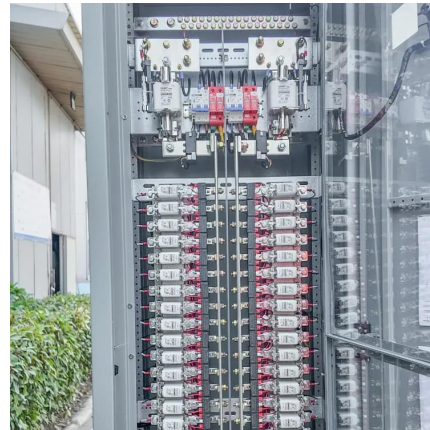
Base stations and cell towers are critical components of cellular communication systems, serving as the infrastructure that supports seamless ...





Communication Base Station Backup Battery

Communication base station backup batteries are designed to provide a consistent and reliable power supply during electricity outages. This ensures ...



Mobile communication base station power supply equipment ...

The base station power system is one of the supporting support systems for mobile main equipment and transmission equipment, involving various professional subjects such as ...

Communication Base Station Energy Solutions

During the day, the solar system powers the base station while storing excess energy in the battery. At night, the energy storage system discharges to supply power to the base station, ...



Aluminum Air Battery Fuel Cell Communication Emergency ...

Aluminum fuel communications emergency power supply is a self-developed aluminum alloy company used in communications base station backup power supply. It uses constant power ...



[DALY base station energy storage BMS solution for ...](#)

Provide comprehensive BMS (battery management system) solutions for communication base station scenarios around the world to help ...



[The 200Ah Communication Base Station Backup ...](#)

GEM Battery GF series communication base station lead-acid batteries are used for telecom communication backup power supply, support multi-channel ...



[Technical Specifications for Ring Alarm Devices](#)

Z-Wave range Ring uses Z-Wave technology to securely send signals between devices around your home and the Base Station. The range for Z-Wave communication is up to 250 feet ...





[Communication Base Station Backup Battery](#)

When natural disasters cut off power grids, when extreme weather threatens power supply safety, our communication backup power system with intelligent charge/discharge management and ...

BMS for Telecom Base Station BES-01

The MOKOEnergy BMS keeps your telecom battery backup power supply optimized for reliability. Our compact BMS board actively balances cells, prevents overcharging, and protects against ...



[Intelligent Storage Battery , Batteries](#)

Huaxing Communication's base station energy storage battery series includes 5U compatible lead-acid size storage batteries, as well as 3U, 2U, and 1U energy storage batteries. These ...

[Telecom Base Station Backup Power Solution: Design ...](#)

Discover the 48V 100Ah LiFePO4 battery pack for telecom base stations: safe, long-lasting, and eco-friendly. Optimize reliability with our ...



Understanding Backup Battery Requirements for ...

Telecom base stations require reliable backup power to ensure uninterrupted communication services. Selecting the right backup battery is ...



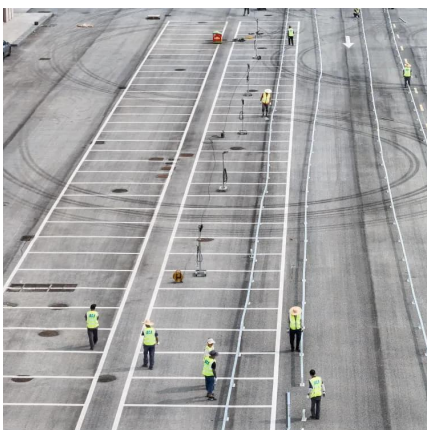
Environmental feasibility of secondary use of electric vehicle ...

The choice of allocation methods has significant influence on the results. Repurposing spent batteries in communication base stations (CBSs) is a promising option to ...



Lithium ion battery for telecom industry/towers/backup systems

A telecom base station is an interface device for mobile devices to access the Internet and a form of radio station. In a certain radio coverage area, a radio transceiver station that transmits ...





Types and Applications of Mobile Communication Base Stations

Mobile communication base station is a form of radio station, which refers to a radio transceiver station that transmits information between mobile phone terminals through a ...



Communication Base Station Backup Battery

Communication base station backup batteries are designed to provide a consistent and reliable power supply during electricity outages. This ensures uninterrupted communication services, ...

Understanding Backup Battery Requirements for Telecom Base Stations

Telecom base stations require reliable backup power to ensure uninterrupted communication services. Selecting the right backup battery is crucial for network stability and ...



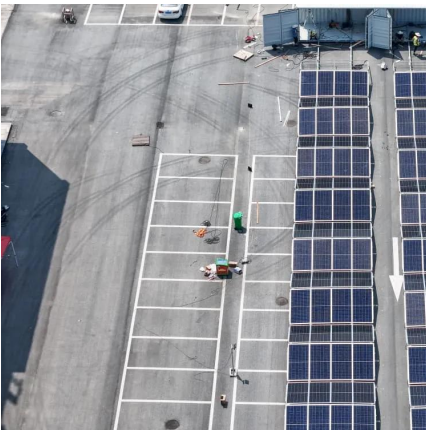
Telecom Base Station Battery

Our Telecom Base Station Battery Solutions are designed to provide reliable power support for Telecommunications base stations, ensuring continuous operation and optimal performance.



Global Communication Base Station Energy Storage Battery ...

The global Communication Base Station Energy Storage Battery market is poised to witness substantial growth in the years to come, driven by the burgeoning demand for reliable and ...



Telecom Base Station Backup Power Solution: Design Guide for ...

Discover the 48V 100Ah LiFePO4 battery pack for telecom base stations: safe, long-lasting, and eco-friendly. Optimize reliability with our design guide.

[Communication Base Station-Vanyo Battery](#)

A communication base station, also known as a public mobile communication base station, is a form of wireless radio station. It is mainly responsible for transmitting information to and from ...





Contact Us

For catalog requests, pricing, or partnerships, please visit:
<https://www.bringmethehorizon.eu>