



**SolarMax Pro Energy Storage Systems**

# Battery Inverter Safety





## Overview

---

Inverters can cause several types of damage to batteries, primarily due to improper connections, voltage mismatches, and insufficient charge management. To understand how these types of damages occur, we must examine the implications of each one. Are Inverter Batteries safe?

Using inverter batteries to maintain power during outages is essential, but safety is paramount. Follow these dos and don'ts to ensure a secure setup. Choosing the right battery, proper ventilation, regular inspections, and cleanliness are key. High-quality cables and a fire safety plan add extra layers of safety.

Can a 110 volt power inverter kill you?

110 Volts of current can be lethal. Improper use of a power inverter will result in property damage, personal injury, or loss of life. Please read and follow carefully the instructions in the Owner's Manual provided with every inverter for important safety considerations and precautions.

What should I do if my inverter battery is overloaded?

1. Don't overload the battery: Each inverter battery has a specific capacity. Avoid overloading it by connecting too many appliances or devices. Overloading can lead to excessive heat generation, reduced battery life, and even safety hazards. Be mindful of the power requirements of the devices you connect to the inverter.

What should you not do with an inverter battery?

Don't expose the battery to extreme temperatures: Inverter batteries are sensitive to temperature fluctuations. Avoid exposing them to extreme heat or cold as it can affect their performance and lifespan. Optimal operating temperatures are usually mentioned in the battery's specifications. 3.

What happens if you overload an inverter battery?



Overloading can lead to excessive heat generation, reduced battery life, and even safety hazards. Be mindful of the power requirements of the devices you connect to the inverter. 2. Don't expose the battery to extreme temperatures: Inverter batteries are sensitive to temperature fluctuations.

How do I know if my inverter is safe?

Consider the inverter's environmental ratings, such as IP (Ingress Protection) codes, which indicate the level of protection against solid and liquid intrusion. Regularly check the enclosure for any damage or wear and replace it if necessary to maintain the integrity of the inverter's protection. 8. Install Safety Devices



## Battery Inverter Safety

---



### [What safety precautions should be taken when ...](#)

When installing an inverter, a series of safety guidelines need to be followed to ensure the safe operation of the equipment and extend its service life. Here ...

### [Inverter Battery Safety Dos and Don'ts - Blog](#)

In today's world, where power outages are common, having an inverter battery is essential to keep our homes running smoothly during such ...



### [Inverter Safety Tips Every Homeowner Should Know Today](#)

6 days ago· Discover expert inverter safety tips to prevent risks, ensure reliable power, and protect your home. Learn standards, precautions, and solar inverter safety.



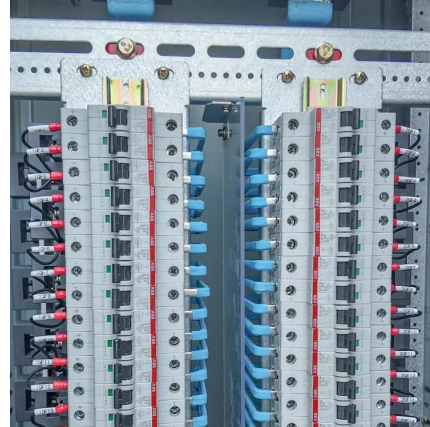
### [Inverter Safety Tips Every Homeowner Should Know Today](#)

6 days ago· Whether you rely on an inverter for backup power during outages or as part of a





solar inverter system, inverter safety is something you cannot afford to overlook. Improper ...



### [Selecting and Sizing Solar System Components](#)

This article explains how to design solar power systems with a focus on calculating energy requirements and sizing solar panels, batteries, inverters, and charger controllers.

### [Safety Precautions and Installation Tips \(Please Read\)](#)

Improper use of a power inverter will result in property damage, personal injury, or loss of life. Please read and follow carefully the instructions in the Owner's Manual provided with every ...



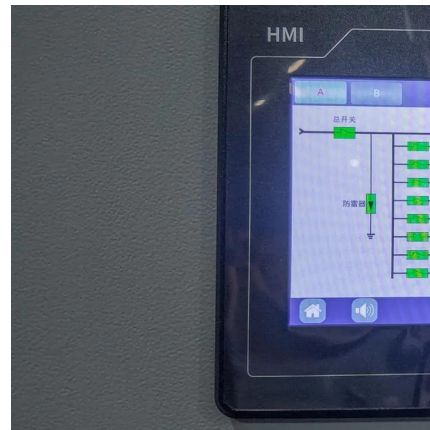
### **Inverter Safety Tips: Ensuring a Secure and Reliable Power Supply**

Safety should be a top priority when using inverters to prevent accidents, electrical issues, and equipment damage. In this blog post, we will guide you through the necessary ...



## [Inverter Battery Safety Dos and Don'ts - Blog](#)

In today's world, where power outages are common, having an inverter battery is essential to keep our homes running smoothly during such times. However, it's important to ...



## **9 Essential Precautions For Safe Inverter Installation ...**

Don't risk inverter failure! Learn 9 essential precautions for proper sizing, installation, and maintenance. Boost safety and performance today.

## **Can an Inverter Damage a Battery? Risks, Safety Concerns, and**

Understanding how an inverter interacts with a battery is essential for safe usage. This knowledge helps in safeguarding battery health and ensuring reliable performance. Next, ...



## **Are Power Inverters Bad for Your Battery? Risks, Effects, and Safety**

Power inverters change battery power into AC power. If the inverter demands more power than the battery can provide, it causes excessive discharge. This can shorten the ...



### [Inverter Calculator , The Van Conversion](#)

Selecting the right inverter size for your van conversion is crucial to ensure that your electrical appliances function safely and efficiently. This calculator helps you determine the appropriate ...



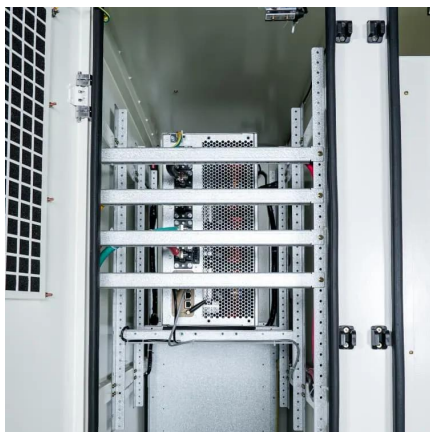
### [How to Safely Operate an Inverter? - Blog](#)

The first and foremost safety instruction or tip while operating an inverter is to read its manual from its manufacturer carefully. The manual ...

### **Electric and Hybrid Vehicles: Battery, Charging & Safety , NHTSA**

This high-voltage battery is very different from a vehicle's 12-volt battery that powers lighting and instrumentation systems. You should never try to service the traction battery without proper ...





### [Inverter Safety Tips: Ensuring a Secure and Reliable ...](#)

Safety should be a top priority when using inverters to prevent accidents, electrical issues, and equipment damage. In this blog post, we will ...

### **Can I Carry An Inverter Battery In My Car? Safety Tips And ...**

In summary, when carrying an inverter battery, using the right safety equipment is essential for protection and risk reduction. Each piece of equipment serves a specific purpose, ...



### [What safety precautions should be taken when ...](#)

Conclusion Through the above measures, the safe use of the inverter and battery can be effectively guaranteed, and the service life of the equipment can be ...

### [Power Inverter Safety Considerations](#)

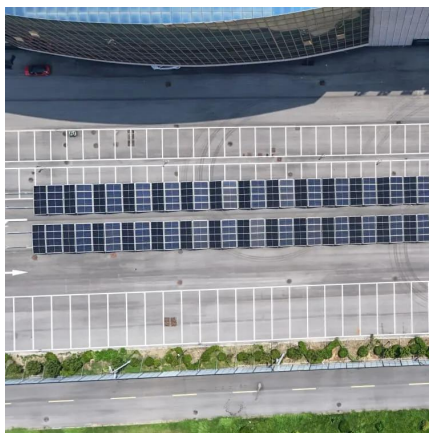
The power inverter is an electronic product. Yes, I agree with you that we should have to be aware of using it. Also, if I use the 3000-watt inverter we should ...





## Battery Energy Storage Systems: Main Considerations for Safe

This webpage includes information from first responder and industry guidance as well as background information on battery energy storage systems (challenges & fires), BESS ...



## Car Battery Inverter Guide: Power Your Devices Anywhere Safely

Learn how to safely use a car battery inverter, how long it lasts, what battery to choose, and key tips for powering devices off-grid or during outages.



## Inverter Battery Connection: Essential Tips For Safe And Efficient

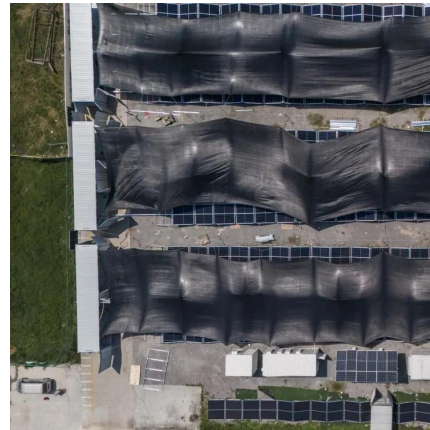
Learn essential tips for safe and efficient inverter battery connection. Discover step-by-step guides, wiring techniques, and troubleshooting tips to optimize your power backup system's ...





## 9 Essential Precautions For Safe Inverter Installation & Use -- ...

Don't risk inverter failure! Learn 9 essential precautions for proper sizing, installation, and maintenance. Boost safety and performance today.



## Frequently Asked Questions About Power Inverters , DonRowe

Frequently Asked Questions about Power Inverters. Get answers to all of you power inverter questions including what a power inverter is and what it can be used for, how to size and ...

## Portable Power Inverter Safety Tips Every User Should Know

Safety starts with correct installation. A power inverter should be mounted on a stable, well-ventilated surface where heat can easily dissipate. Overheating is one of the most ...



## What safety precautions should be taken when installing and ...

When installing an inverter, a series of safety guidelines need to be followed to ensure the safe operation of the equipment and extend its service life. Here are some important safety measures:



## Contact Us

---

For catalog requests, pricing, or partnerships, please visit:  
<https://www.bringmethehorizon.eu>