



SolarMax Pro Energy Storage Systems

**Battery 51 2v can be matched
with 48v inverter**





Battery 51.2v can be matched with 48v inverter



Can I use a 51.2 V battery on a 48V inverter?

If your system is designed for 48V, then both 48V and 51.2V batteries will generally work, but performance may vary depending on how well the battery voltage matches the system.

What is The Difference Between 48V and 51.2V LiFePO4 Batteries?

Can I replace my existing 48V Li-FePO4 battery with a 51.2V Li-FePO4 battery? Yes, in some cases, but make sure that your solar system components (such as the inverter and charge ...



15.36KWh 51.2V 300Ah LiFePO4 Solar Battery 48V Storage Battery

...

2 days ago · Find many great new & used options and get the best deals for 15.36KWh 51.2V 300Ah LiFePO4 Solar Battery 48V Storage Battery RS485 BMS LCD at the best online prices

...



Batteries with different voltages 48v + 51.2v

If you want to do that in a way that will not damage the battery, you would need to set your



inverter to charge to nominal 48V which means your 51.2V battery would only charge ...



Stupid question on 51.2v / 48v batts , DIY Solar Power Forum

If you have an old inverter with only fixed Lead acid battery voltages, then the 15s might make sense. Every modern inverter/charger with adjustable voltage levels supports the ...

5.12KWH Powerwall LiFePO4 Lithium Battery

Highlight: ?Character: The 51.2V 100AH LFP Battery is compact, well-designed, LCD, and cable/accessories ready for installation. ≥ 7000 cycles deep cycle 10 ...



51.2V LiFePO4 vs 48V: Which Battery Voltage Powers Your Needs?

51.2V LiFePO4 batteries use 16 cells, delivering higher voltage than 48V systems with 15 cells. This affects charging, efficiency, and compatibility with inverters and controllers.



[Connect 5kW Inverter with 51.2V LiFePO4 Battery?](#)

In this video, Valerie is at the QH production line in Shenzhen, China. She will show us how to connect the 48V 5kW #inverter with the 48V ...



[48v/51.2V 100Ah 5kwh All In One Energy Storage ...](#)

48V/51.2V 100ah 5kwh All In One Energy Storage System With 5kw Inverter For Residential Solar Battery This all in one energy storage system has a rated ...

[\[Full Guide\] How Many Batteries Do I Need for a 5KW ...](#)

Since you can't use a fraction of a battery, you would need a minimum of four 51.2V 100Ah lithium batteries to adequately support your 5kW inverter for four ...



48V or 51.2V LiFePO4

There are 48V LiFePO4 batteries, with 15 3.2V cells, and 51.2V, with 16 cells. In the Victron equipment settings there is only one default option for LiFePO4 batteries, without ...



SunGold Power 5.12kWh 51.2V LiFePO4 Battery , Smart BMS

Power your home or business with reliable, long-lasting energy storage using the SunGold Power 48V 100Ah LiFePO4 Powerwall Battery. Designed for both residential and commercial solar ...



48V 10kWh and 51.2V 10kWh lithium-ion battery ...

The 51.2V battery is a standard module consisting of 16 strings of LiFePO4 cells (16S x 3.2V). The "48V battery" is a generalized term, which ...

What Is a 51.2V LiFePO? Battery and Why It's Ideal for Solar ...

Unlike 12V or 24V systems that require multiple battery packs in parallel, a single 51.2V battery can directly match 48V solar inverters, reducing wiring complexity and boosting ...





Understanding Battery Capacity and Inverter Compatibility

To estimate how long a battery can run an inverter, we need to consider the power draw and the battery's capacity. Using a 100 Ah battery with a 1000W inverter, we perform the ...

[What's The Difference Between 48v and 51.2v Golf ...](#)

While 48V batteries are common, 51.2V batteries are becoming popular because they offer more power and better performance. Knowing ...



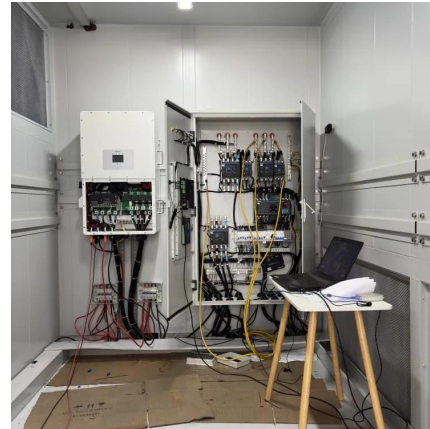
[Connect 5kW Inverter with 51.2V LiFePO4 Battery? Solar](#)

In this video, Valerie is at the QH production line in Shenzhen, China. She will show us how to connect the 48V 5kW #inverter with the 48V 100Ah/200Ah #lifepo4 batteries. more



[48V vs 51.2V LiFePO4 Batteries: What's the Difference?](#)

Both 48V and 51.2V batteries are highly efficient in delivering power, but the higher voltage of a 51.2V battery can translate to slightly better efficiency when paired with ...



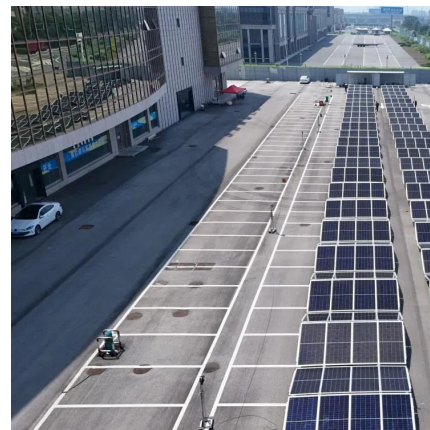
EG4 ® LIFEPOWER4 48V V2 BATTER

L L I F E P O W E R 4 4 8 V V 2 B A T T E R Y E G 4
Lithium Iron Phosphate battery 51.2V (48V
battery) 5.12kWh with 100A internal BMS,
composed of (16) UL recognized prismatic 3.2V
...



Lifepo4 Lithium Wall Mounted Battery with More Than 6000 Cycles 51.2v

Lifepo4 Lithium Wall Mounted Battery with More
Than 6000 Cycles 51.2v 48v 100AH 200AH
280AH 314AH Easy to Install No reviews yet
Sunpro Energy Tech Co., Ltd. 3 yrs



SAIL SOLAR 48V 51.2V 300Ah 15kWH Wall-mounted Lithium Battery

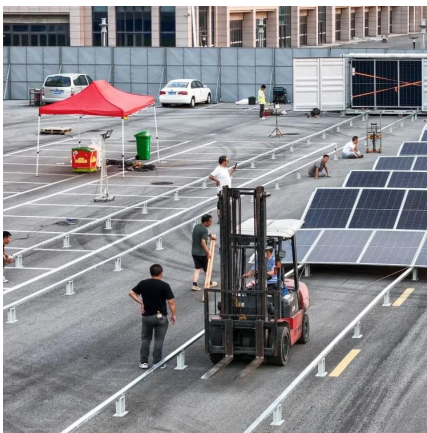
SAIL SOLAR mainly uses CATL battery cells to
produce lithium battery, regular voltage can be
48V/51.2V, the capacity can be
14400Wh/153600Wh. SAIL SOLAR offers 15 years
design life ...





48v-51.2v-lithium-battery , GSL Energy

Can I use a 51.2V battery with a 48V inverter?
Some inverters accept voltage ranges that include 51.2V (nominal). Always check if the inverter supports charging voltages up to ~58.4V.



How Do 51.2V & 48V 100Ah LiFePO4 Rack Batteries Optimize ...

LiFePO4 (lithium iron phosphate) batteries offer high energy density, thermal stability, and 4,000+ cycle lifespans, making them superior to lead-acid for renewable storage. ...

Contact Us

For catalog requests, pricing, or partnerships, please visit:
<https://www.bringmethehorizon.eu>