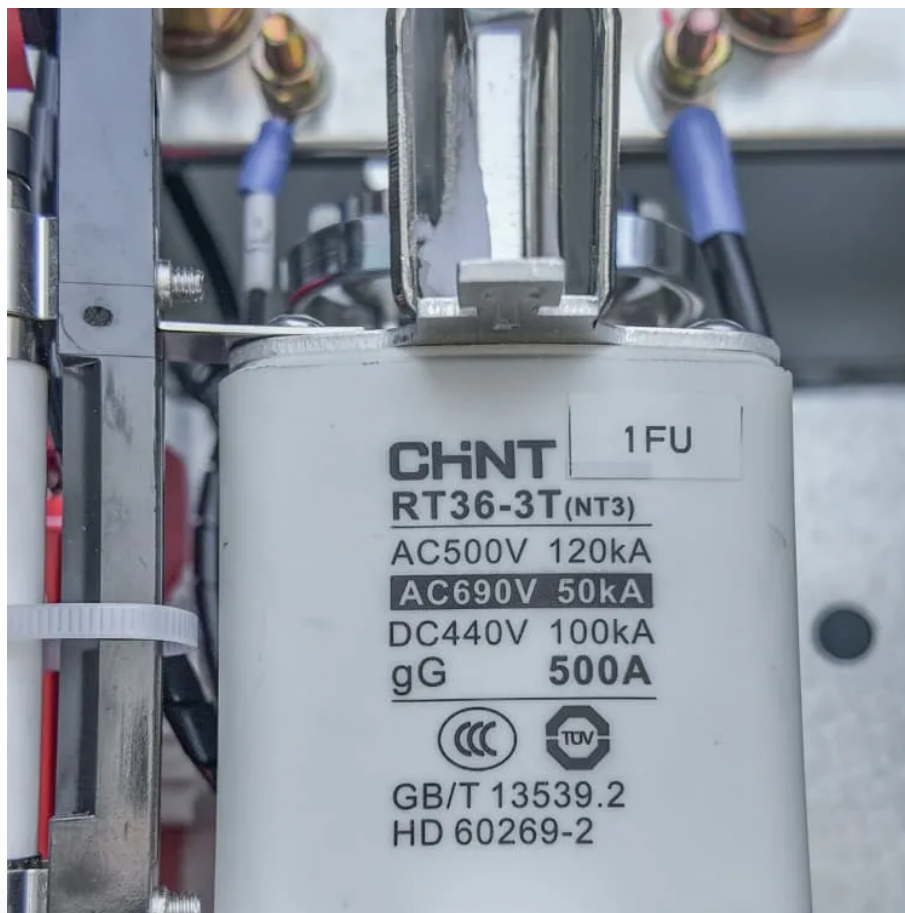




**SolarMax Pro Energy Storage Systems**

## **Base station energy storage battery source**





## Overview

---

Most of the BESS systems are composed of securely sealed , which are electronically monitored and replaced once their performance falls below a given threshold. Batteries suffer from cycle ageing, or deterioration caused by charge-discharge cycles. This deterioration is generally higher at and higher . This aging cause a loss of performance (capacity or voltage decrease), overheating, and may eventually le.

What is a battery energy storage system?

A battery energy storage system (BESS) is an electrochemical device that charges (or collects energy) from the grid or a power plant and then discharges that energy at a later time to provide electricity or other grid services when needed.

Does a 5G base station use energy storage power supply?

In this article, we assumed that the 5G base station adopted the mode of combining grid power supply with energy storage power supply.

Are lithium batteries suitable for a 5G base station?

2) The optimized configuration results of the three types of energy storage batteries showed that since the current tiered-use of lithium batteries for communication base station backup power was not sufficiently mature, a brand- new lithium battery with a longer cycle life and lighter weight was more suitable for the 5G base station.

What is the traditional configuration method of a base station battery?

The traditional configuration method of a base station battery comprehensively considers the importance of the 5G base station, reliability of mains, geographical location, long-term development, battery life, and other factors .

What is a battery storage power plant?

Battery storage power plants and uninterruptible power supplies (UPS) are



comparable in technology and function. However, battery storage power plants are larger. For safety and security, the actual batteries are housed in their own structures, like warehouses or containers.

What is battery storage & how does it work?

Battery storage can be used for short-term peak power and ancillary services, such as providing operating reserve and frequency control to minimize the chance of power outages. They are often installed at, or close to, other active or disused power stations and may share the same grid connection to reduce costs.



## Base station energy storage battery source

---

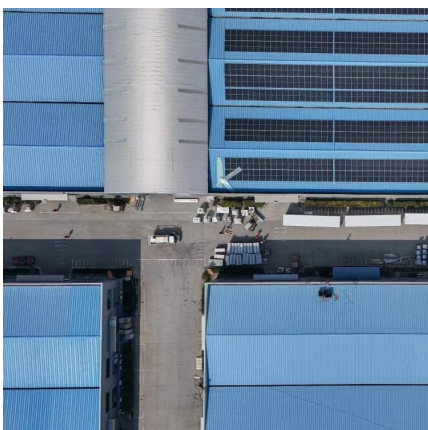


### ?MANLY Battery?Lithium batteries for communication base stations ...

In general, as the demand for 5G communication base stations continues to increase, there will be considerable market space for lithium battery energy storage in the ...

### Battery energy storage system

Most of the BESS systems are composed of securely sealed battery packs, which are electronically monitored and replaced once their performance falls below a given threshold. ...



### Revolutionising Connectivity with Reliable Base Station Energy Storage

Base station energy storage refers to batteries and supporting hardware that power the BTS when grid power is unavailable or to smooth out intermittent renewable sources like ...

### What Is Base Station Energy Storage?

Energy storage in base stations is a critical aspect to maintain the strength and reliability of our communication systems. With the help of



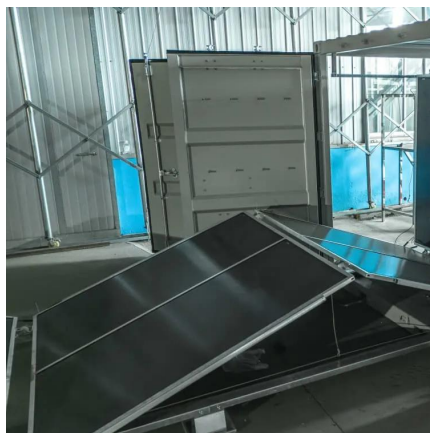


smart systems, along with powerful ...



## Optimal configuration of 5G base station energy storage ...

To maximize overall benefits for the investors and operators of base station energy storage, we proposed a bi-level optimization model for the operation of the energy storage, ...



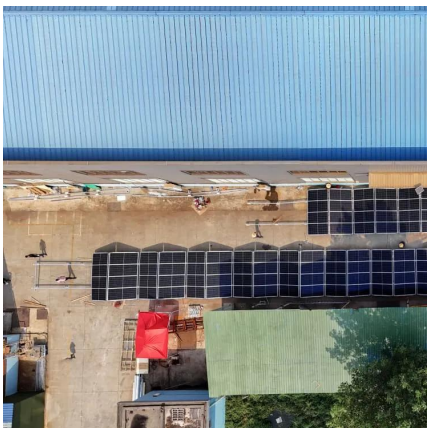
## Grid-Scale Battery Storage: Frequently Asked Questions

A battery energy storage system (BESS) is an electrochemical device that charges (or collects energy) from the grid or a power plant and then discharges that energy at a later time to ...



## What is a base station energy storage battery? , NenPower

Base station batteries are often coupled with various energy sources, particularly renewables such as solar panels. This synergy not only addresses the immediate energy ...





## Optimal configuration of 5G base station energy storage

The high-energy consumption and high construction density of 5G base stations have greatly increased the demand for backup energy storage batteries. To maximize overall benefits for ...



## **4U 48V 150Ah Solar Energy Storage Telecom Base Station Lifepo4 Battery**

CTECHI 4U 48V 150Ah Solar Energy Storage Telecom Base Station 48V Lifepo4 Battery Pack Base stations have been massively deployed nowadays to afford the explosive demand to ...

## 5g base station energy storage battery specifications

?MANLY Battery?Lithium batteries for communication base stations With the gradual application of 5G technology, it will have a profound impact on economic and social ...



## **Battery Energy Storage Systems: Main Considerations for Safe**

This webpage includes information from first responder and industry guidance as well as background information on battery energy storage systems (challenges & fires), BESS ...



## Battery Energy Storage Systems Report

This information was prepared as an account of work sponsored by an agency of the U.S. Government. Neither the U.S. Government nor any agency thereof, nor any of their ...



## Communication Base Station Energy Solutions

During the day, the solar system powers the base station while storing excess energy in the battery. At night, the energy storage system discharges to supply power to the base station, ...

## What Is BESS? Battery Energy Storage Systems Explained

1 day ago· This article goes back to the basics of Battery Energy Storage Systems (BESS), which are critical to the clean energy transition. By storing electricity and releasing it when needed, ...







## How Energy Storage Lead Acid Batteries Are Revolutionizing Telecom Base

As the industry continues to evolve, embracing innovations and integrating renewable energy sources with lead acid battery systems will be key to ensuring sustainable ...

## Revolutionising Connectivity with Reliable Base Station Energy ...

Base station energy storage refers to batteries and supporting hardware that power the BTS when grid power is unavailable or to smooth out intermittent renewable sources like ...



## Distribution network restoration supply method considers 5G base

Aiming at the shortcomings of existing studies that ignore the time-varying characteristics of base station's energy storage backup, based on the traditional base station ...

## Communication Base Station Energy Solutions

During the day, the solar system powers the base station while storing excess energy in the battery. At night, the energy storage system discharges to ...





### What Are The Best Batteries For Whole Home Backup?

The batteries used in both systems are identical--whole-home backup simply requires more of them. Think of it like generators: You can choose a small ...



### Toward Net-Zero Base Stations with Integrated and

The energy consumption and carbon emissions of base stations (BSs) raise significant concerns about future network deployment. Renewable energy is thus adopted and supplied to enable ...



### **Base Power and the Future of Battery Storage for Grid ...**

The rise of decentralized energy storage isn't on the horizon - it's already here. As extreme weather events and electrification trends put new ...





## Battery energy storage system

OverviewSafetyConstructionOperating characteristicsMarket development and deployment

Most of the BESS systems are composed of securely sealed battery packs, which are electronically monitored and replaced once their performance falls below a given threshold. Batteries suffer from cycle ageing, or deterioration caused by charge-discharge cycles. This deterioration is generally higher at high charging rates and higher depth of discharge. This aging cause a loss of performance (capacity or voltage decrease), overheating, and may eventually le...



## BASE STATION BATTERIES

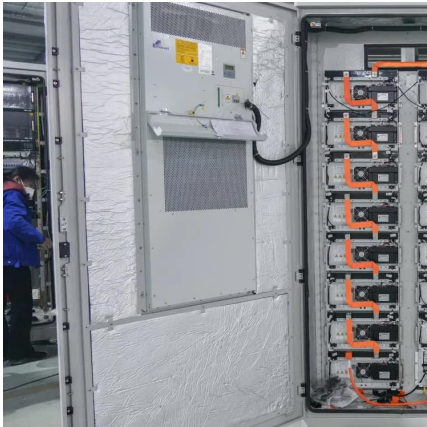
A battery energy storage system (BESS), battery storage power station, battery energy grid storage (BEGS) or battery grid storage is a type of technology that uses a group of in the grid ...

## Microsoft PowerPoint

Lead is a viable solution, if cycle life is increased. Other technologies like flow need to lower cost, already allow for +25 years use (with some O& M of course). Source: 2022 Grid Energy ...



## Base Power and the Future of Battery Storage for Grid Reliability



The rise of decentralized energy storage isn't on the horizon - it's already here. As extreme weather events and electrification trends put new pressure on the grid, innovative ...

## What is large-scale base station energy storage? , NenPower

Large-scale base station energy storage refers to the implementation of substantial energy storage systems in telecommunication infrastructure to enhance efficiency ...



## Base Station Energy Storage

A base station energy storage system is a compact, modular battery solution designed to ensure uninterrupted power supply for telecom base stations. It supports stable operations during grid ...

## Hybrid Control Strategy for 5G Base Station Virtual Battery

Furthermore, a multi-objective joint peak shaving model for base stations is established, centrally controlling the energy storage system of the base station through a ...





## Contact Us

---

For catalog requests, pricing, or partnerships, please visit:  
<https://www.bringmethehorizon.eu>