



**SolarMax Pro Energy Storage Systems**

# **Base station communication battery Does it have a communication base station**





## Overview

---

What is a communication base station?

Communication base station setups will usually include a wide array of different technologies, including power supplies, data servers, head end, radio repeaters, and communication systems that allow for high-speed continuous information flow. It can also be used as part of a leaky feeder system in the communication network.

Which battery is best for telecom base station backup power?

Among various battery technologies, Lithium Iron Phosphate (LiFePO<sub>4</sub>) batteries stand out as the ideal choice for telecom base station backup power due to their high safety, long lifespan, and excellent thermal stability.

What makes a telecom battery pack compatible with a base station?

Compatibility and Installation Voltage Compatibility: 48V is the standard voltage for telecom base stations, so the battery pack's output voltage must align with base station equipment requirements. Modular Design: A modular structure simplifies installation, maintenance, and scalability.

What is a cellular communication base station?

A cellular communication base station is an apparatus for transmitting and receiving electromagnetic waves in the radiofrequency (RF) range and it is the site through which cellular devices communicate with communication systems deployed throughout the world.

How does a mobile station communicate with a base station?

The communications between mobile station and base station occur concurrently via two air interface channels from each base station separately. Both channels (signals) are received at the mobile station by maximal combining Rake processing (see Figure 11.20 ). Soft handoff occurs in about 20–40% of calls. Figure 11.20. Soft handoff in CDMA.



Why is backup power important in a 5G base station?

With the rapid expansion of 5G networks and the continuous upgrade of global communication infrastructure, the reliability and stability of telecom base stations have become critical. As the core nodes of communication networks, the performance of a base station's backup power system directly impacts network continuity and service quality.



## Base station communication battery Does it have a communication

---

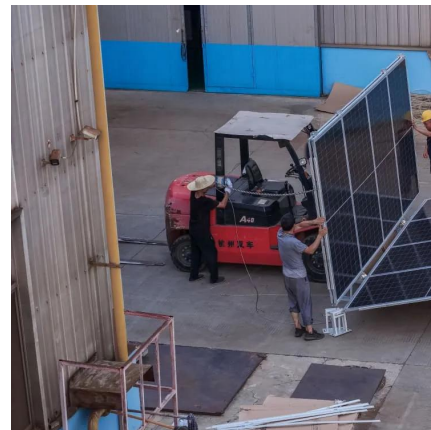


### 19-Inch Lithium Battery Cabinets for 4G/5G - KDST

19-inch lithium batteries in 4G and 5G communications battery cabinets In modern communication base stations, battery cabinets play a crucial role as ...

### Lithium battery is the magic weapon for ...

For example, lithium iron phosphate batteries have been used in various fields such as large energy storage power plants, communication base ...



### What is a Base Station in Telecommunications?

What is a Base Station? A base station is a critical component in a telecommunications network. A fixed transceiver that acts as the central ...

### Communication Base Station Backup Battery

Communication base station backup batteries are designed to provide a consistent and reliable



power supply during electricity outages. This ensures ...



## What is a base station energy storage battery? , NenPower

Base station energy storage batteries play a pivotal role in modern telecommunication networks, particularly as demand for uninterrupted service intensifies. ...

## Communication Base Station Battery

Communication base station batteries are advanced energy storage systems designed to provide reliable and uninterrupted power supply to communication base stations. These batteries ...



## Selection and maintenance of batteries for communication base ...

As an important part of the power supply system of communication base stations, batteries play a vital role in the construction of communication base station power supply systems.





## Global Communication Base Station Battery Trends: Region ...

The integrated base station segment currently holds a larger market share, but the distributed base station segment is exhibiting faster growth owing to the increasing adoption of ...



## Telecom Base Station Backup Power Solution: Design Guide for ...

Discover the 48V 100Ah LiFePO4 battery pack for telecom base stations: safe, long-lasting, and eco-friendly. Optimize reliability with our design guide.

## EVE 280AH 3.2V Battery in a Communication Base Station ...

The communication base station is located in a remote area where power outages are common. It needs a backup power system that can provide stable electricity for at least 24 hours during ...



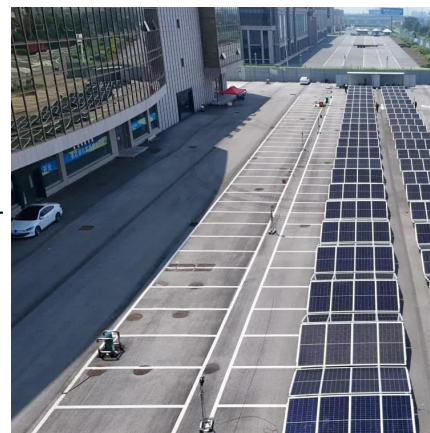
## What is Base Station?

Nowadays, networking has become a crucial part of our daily lives. To implement network services for users, base station plays an essential role to constitute a ...



### Telecom Base Station Backup Power Solution: Design ...

Discover the 48V 100Ah LiFePO4 battery pack for telecom base stations: safe, long-lasting, and eco-friendly. Optimize reliability with our ...

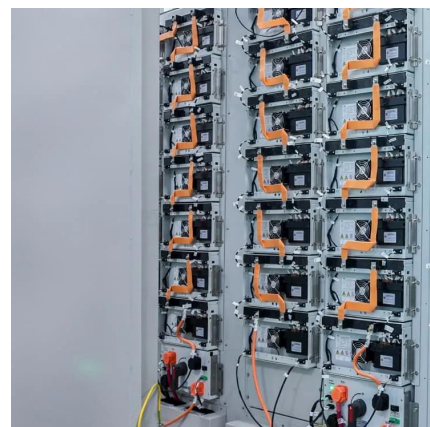


### **Lithium battery is the magic weapon for communication base station**

For example, lithium iron phosphate batteries have been used in various fields such as large energy storage power plants, communication base stations, electric vehicles.

### **Does the communication base station energy storage lithium ...**

Are lithium batteries suitable for a 5G base station? 2) The optimized configuration results of the three types of energy storage batteries showed that since the current tiered-use of lithium ...



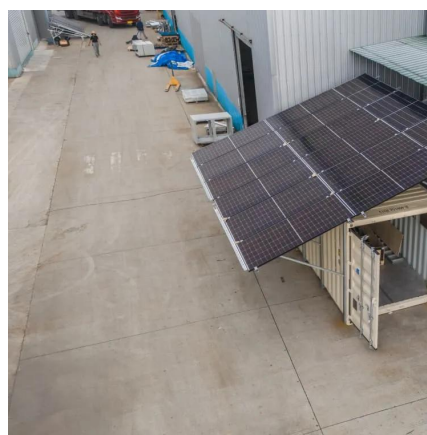


## 10 Best Ham Radio Base Station For Long Range Communication

In this article, we have described details of different Ham radio base station that will help you to select the best one based on your needs.

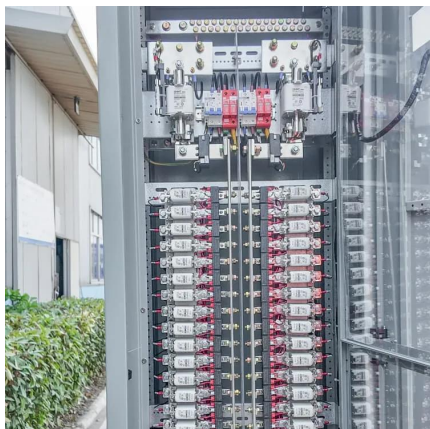
### [Battery technology for communication base stations](#)

In order to ensure the reliability of communication, 5G base stations are usually equipped with lithium iron phosphate cascade batteries with high energy density and high charge and ...



### [Communication Base Station Energy Solutions](#)

During the day, the solar system powers the base station while storing excess energy in the battery. At night, the energy storage system discharges to ...



### [Communication Base Station Backup Battery](#)

Communication base station backup batteries are designed to provide a consistent and reliable power supply during electricity outages. This ensures uninterrupted communication services,

...





### What is a base station energy storage battery?

Base station energy storage batteries play a pivotal role in modern telecommunication networks, particularly as demand for uninterrupted service ...



### The 200Ah Communication Base Station Backup ...

In the information age, especially the arrival of the 5G era, communication base stations are particularly important. Lead-acid batteries are reliable energy ...



### Do You Need A Base Station For Two-Way Radio ...

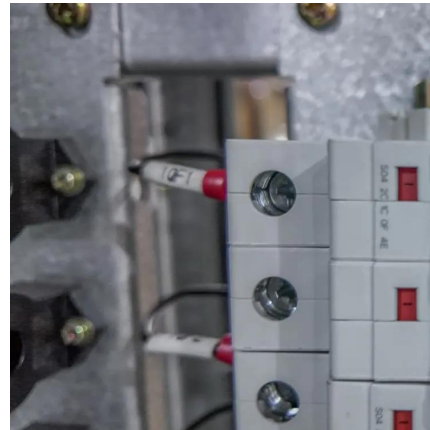
A base station, also known as a repeater, is a device used for communicating with or without hand-held radios, but most often with. A base ...





## Power Supply Solutions for Wireless Base Stations Applications

In a wireless base station, the data communication system ensures the transmission of data that is at the core of the wireless network. The data communication system of a wireless base ...



## How Solar Energy Systems are Revolutionizing Communication Base Stations?

Communications companies can reduce dependency on the grid and assure a better and more stabilized power supply with the installation of photovoltaic and solar ...

### Communication Base Station Energy Solutions

During the day, the solar system powers the base station while storing excess energy in the battery. At night, the energy storage system discharges to supply power to the base station, ...



## Base Station System Structure

2 Base Station Background The intent of this section is to explore the role of base stations in communications systems, and to develop a reference model that can be used to describe and ...



## The 200Ah Communication Base Station Backup Power Lead-acid Battery

In the information age, especially the arrival of the 5G era, communication base stations are particularly important. Lead-acid batteries are reliable energy guarantees for communication ...



## Selection and maintenance of batteries for communication base stations

As an important part of the power supply system of communication base stations, batteries play a vital role in the construction of communication base station power supply systems.

## Base Station Controller

A Base Station Controller (BSC) is a crucial component in mobile networks that acts as the brain behind cellular communication. It serves as the central station that manages ...





## Contact Us

---

For catalog requests, pricing, or partnerships, please visit:  
<https://www.bringmethehorizon.eu>