

Base station battery connected to more than





Overview

What is a base battery system?

The Base battery system is built for performance and reliability. It combines a high-capacity lithium iron battery with intelligent software to optimize energy use. The Base battery system has three main components: the battery pack, inverter, and hub. The long white unit is the battery pack. We mount the battery pack on the ground.

Which battery is best for telecom base station backup power?

Among various battery technologies, Lithium Iron Phosphate (LiFePO₄) batteries stand out as the ideal choice for telecom base station backup power due to their high safety, long lifespan, and excellent thermal stability.

How does a base battery work?

This process is called grid-balancing. Base batteries deploy energy to the grid faster than any other service, which is how Base is able to recoup the cost of the battery equipment and keep prices low for homeowners. The charge level of your Base battery will naturally fluctuate over time, rising and falling throughout a multi-day cycle.

What makes a telecom battery pack compatible with a base station?

Compatibility and Installation Voltage Compatibility: 48V is the standard voltage for telecom base stations, so the battery pack's output voltage must align with base station equipment requirements. Modular Design: A modular structure simplifies installation, maintenance, and scalability.

Do base batteries run in two directions?

Base batteries run in two directions, which is how Base is able to keep costs low for homeowners. The batteries charge during off-peak hours, like midday and late at night, when energy is more available and demand is low.



How do I replace the base station's backup battery?

To replace the base station's backup battery, follow the steps below: Unplug the Base Station. You don't want to start fiddling with the device while it is plugged in. Turn the device upside down and locate the battery compartment at the device's base. Unscrew the battery compartment and pull out the protective casing.



Base station battery connected to more than

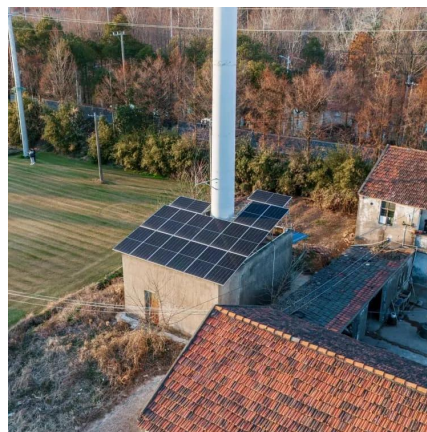


[SmartHub vs Base Station? Ultra 2 directly to WiFi? Buy](#)

2. When it says the Arlo Ultra 2 can 'connect directly to WI-FI', does that mean that no base station is needed (or Smarthub, whatever that is)? If so, how does each camera ...

[Telecom Base Station Backup Power Solution: Design ...](#)

Discover the 48V 100Ah LiFePO4 battery pack for telecom base stations: safe, long-lasting, and eco-friendly. Optimize reliability with our ...



[Battery Backup to base station rig? : r/amateurradio](#)

Set PS to 13.8 VDC. Connect 12V lead acid battery. Connect to radio equipment. I made sure the power supply was happy having a battery connected to its output when not powered up. The ...

Optimum sizing and configuration of electrical system for

This study develops a mathematical model and investigates an optimization approach for

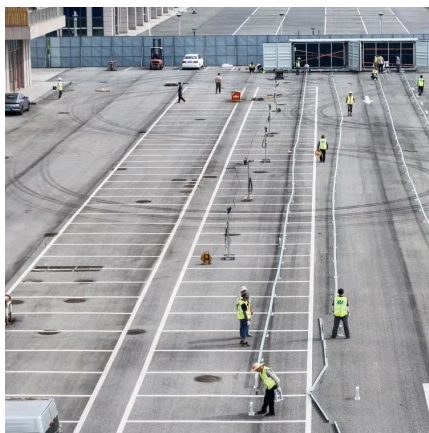


optimal sizing and deployment of solar photovoltaic (PV), battery bank storage ...



[23 Ring Base Station Common Questions \(Solved\)](#)

While you can have more than one Ring base station, Ring only allows one alarm base station per location. When setting up a second base ...



[How the Base battery works: A complete guide to grid ...](#)

How does your Base battery work? How does it connect to the grid? What happens during an outage? This guide covers everything you need to know ...



[How do I use a battery to store power? : r/Stationeers](#)

I have 80 hours in, and I'm trying to figure out how do use a kit battery, like how do I hook it up to store power, I can't grow food, all of it died, and I need some major advice. If you want more ...





[Setting up your Ring Alarm Base Station](#)

Setting up your Ring Alarm Base Station Stay in control of your home from anywhere with the central hub of your alarm system -- the Ring Alarm Base Station. Connect all of your Ring ...



Troubleshooting

Recharge the battery for 12 hours with the AC adapter. If the battery cannot be recharged, you will need to replace the battery. Contact Onset Technical Support or your Onset Authorized ...

ComHub and Base Station FAQs

What is a ComHub? The ComHub stores the wireless base station in a portable, battery-operated, weatherproof case. As such, you can pick up the ComHub and carry it around the work zone ...



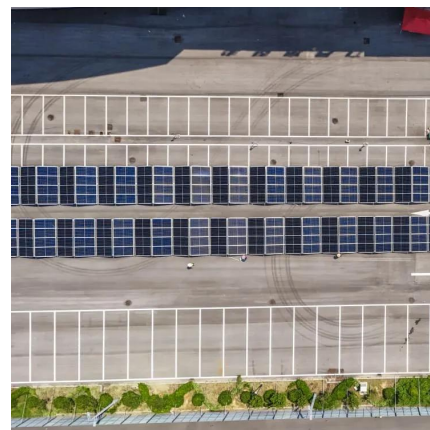
[How the Base battery works: A complete guide to grid ...](#)

How does your Base battery work? How does it connect to the grid? What happens during an outage? This guide covers everything you need to know about how your Base battery ...



18 SimpliSafe Base Station Known Problems (Solved)

SimpliSafe Base Station Light Won't Turn Off The light on your base station is designed to always be on when the device is working. Your ...



What is a base station energy storage battery?

Base station batteries are often coupled with various energy sources, particularly renewables such as solar panels. This synergy not only ...

What is a base station energy storage battery? , NenPower

Base station batteries are often coupled with various energy sources, particularly renewables such as solar panels. This synergy not only addresses the immediate energy ...





Base Station alert troubleshooting

Base Stations and Network Command Suite
When troubleshooting Base Station alerts, you can remotely connect to the Base Station via SSH through the Show Terminal option in the ...

Telecom Base Station Backup Power Solution: Design Guide for ...

Discover the 48V 100Ah LiFePO4 battery pack for telecom base stations: safe, long-lasting, and eco-friendly. Optimize reliability with our design guide.



Using Multiple Batteries Question :: No Man's Sky General ...

To power just the teleporter, you only need one solar panel and one battery. If you connect the teleporter to a proximity sensor (so it only turns on and draws power when you're ...

How can I get my station battery to reverse and power my base ...

Then connect the battery output to your area power controllers. I recommend using heavy coil cable if you're late enough in the game to be able to. Connect your area power controller to ...



Telecom Battery Backup System , Sunwoda Energy

Sunwoda's telecom power system has a capacity covering 50Ah-150Ah, which can be widely used in various macro and micro-station backup scenarios.



DX300 EU

NOTE: When base station battery power is low, everyone connected or registered to that base station will hear a headset tone that repeats every 8 seconds. Additionally, both headset select ...



Optimum sizing and configuration of electrical system for

The rising demand for cost effective, sustainable and reliable energy solutions for telecommunication base stations indicates the importance of integration and exploring the ...





23 Ring Base Station Common Questions (Solved)

While you can have more than one Ring base station, Ring only allows one alarm base station per location. When setting up a second base station, you'd be unable to choose ...



DECT IP Multi-Cell Base Station

Packaging Installation Contents Connect the power and the network using method a or method b. AC Power Option b. PoE (Power over Ethernet) Option IEEE 802.3af compliant ...

What is large-scale base station energy storage? , NenPower

When a base station generates more energy than it can consume or send back to the grid, energy storage can effectively harness this excess, preventing waste and optimizing ...



Contact Us

For catalog requests, pricing, or partnerships, please visit:
<https://www.bringmethehorizon.eu>