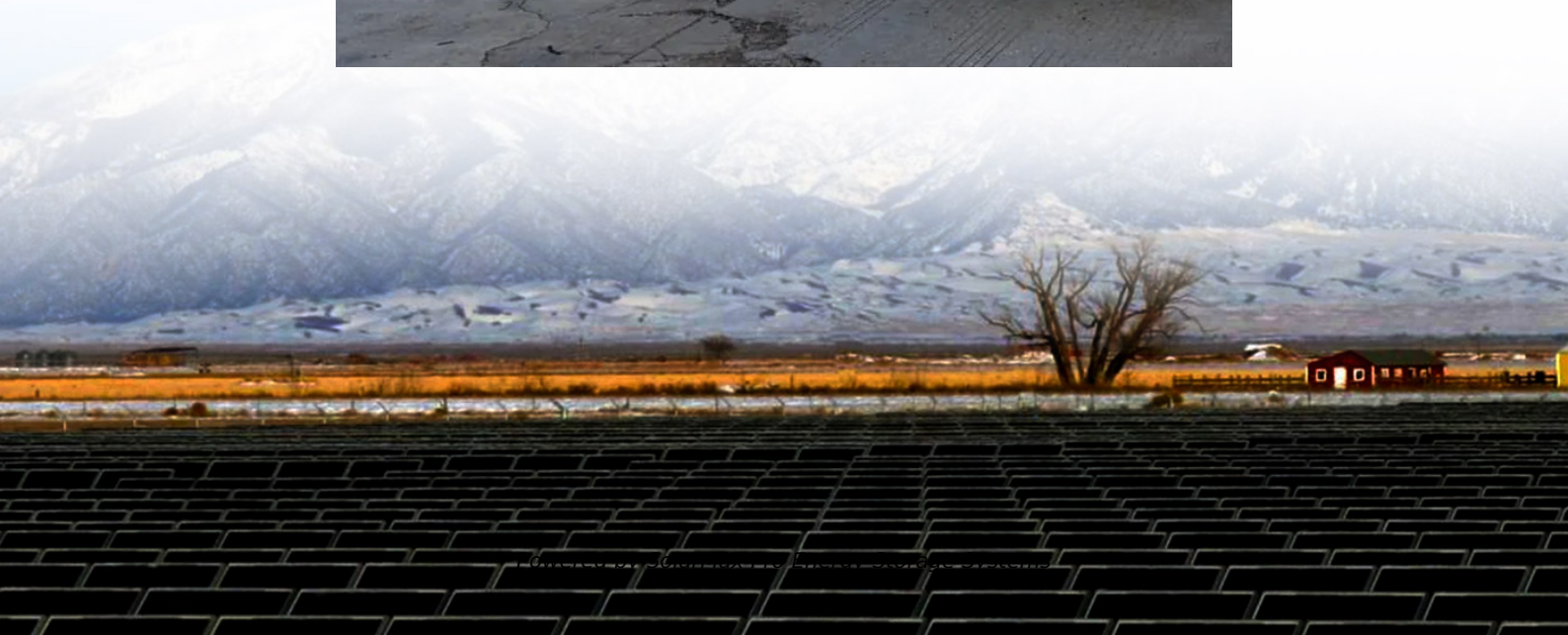




SolarMax Pro Energy Storage Systems

American Outdoor Power System





American Outdoor Power System



[Go Power! Powertrak\(TM\) 400W Charging System](#)

Go Power! Powertrak(TM) 400-watt Solar & Inverter/charger System, the ultimate solution for reliable off-grid power designed to meet the demanding needs of outdoor enthusiasts and RV ...

24V Trolling Motor Systems - Connect-Ease. Plug & Play Outdoor Power

Complete your boat installation with our Game changing 24V Series Trolling Motor systems with and without On board Charging leads which makes rigging and battery removal foolproof. Our ...



Honda Power Equipment in Fairfax, VA at Virginia Outdoor Power

Find all the parts and accessories for your Honda products at Virginia Outdoor Power Equipment Co. Inc in Fairfax. If we don't have it in stock we can order it for you.

[American Outdoor Power LLC , Timpson TX](#)

American Outdoor Power LLC, Timpson. 654 likes · 16 were here. Mower dealer. We carry the



following lines : Bad Boy, Ferris, Snapper, Snapper Pro, Scag .



[Mower Attachments & Accessories , Monaca, PA](#)

Comprehensive Mower Attachments and Accessories American Outdoor Power Equipment Inc offers a comprehensive range of attachments and accessories to maximize the functionality of ...

AMERICAN OUTDOOR POWER LLC

Together with our dealer network, we focus on providing the services and programs that keep you running. These include financing offers, 24/7 online support, trained dealer technicians, ...



AMERICAN OUTDOOR POWER

Specialties: "Locally owned and operated since 1993. Your one stop shop for sales, service and parts. Inventory includes Stihl chainsaws, trimmers, hedge ...



[High Output Products From American Power Systems](#)

When you need reliable products to keep your company going strong, American Power Systems, Inc. is the premier choice for robust power solutions. Globally trusted, innovative, dependable, ...



Inventory American Outdoor Power Tucson, AZ (520) 622-1957

KM 94 R - STIHL Call for Price Availability
Brochure Style Power Sources Engine Type Gas
Fuel Capacity 18.3 oz. (540 cc) Horsepower 1.2 bhp (0.9 kW) Weight 8.8 lb. (4.0 kg) View Details ...

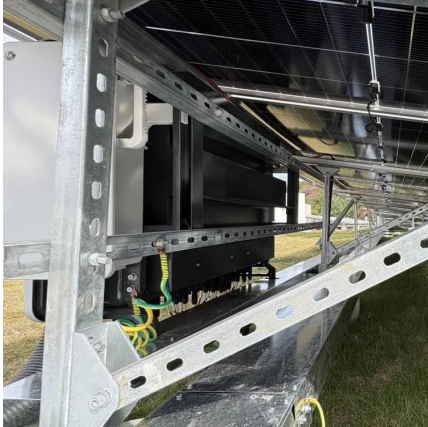
[FAQs , American Outdoor Power Equipment , Monaca, PA](#)

Learn More About American Outdoor Power Equipment Inc Located in Monaca, PA. American Outdoor Power Equipment specializes in lawn equipment sales and lawn equipment service. ...



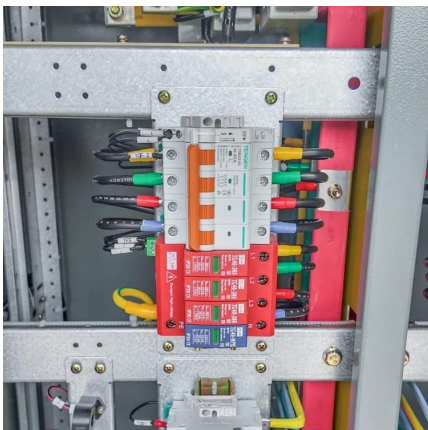
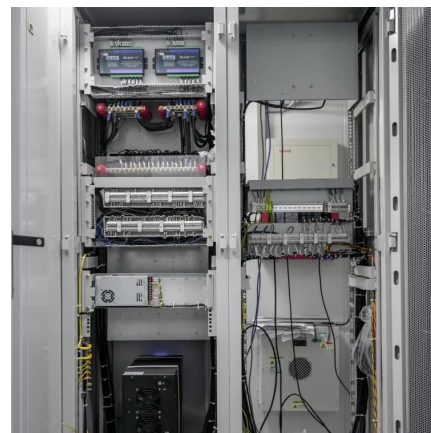
[STIHL Batteries & Chargers for Sale in Tucson, AZ 85705](#)

American Outdoor Power is an authorized STIHL Batteries & Chargers Dealer in Tucson, AZ. You'll find the right Batteries & Chargers in the STIHL line.



Electrical Systems for Outdoor Power Equipment

Electrical Systems for Outdoor Power Equipment covers the fundamentals of electrical components, circuits, and systems specific to outdoor power equipment powered by small ...



Virginia Outdoor Power Equipment Co. Inc

Shop the best Honda lawn mowers, including walk behind mowers and commercial mowers at Virginia Outdoor Power Equipment Co. Inc located in Fairfax, VA.

Virginia Outdoor Power

virginia outdoor power is an independent ECHO Servicing dealer. By being a Servicing Dealer, they carry a wide selection of ECHO equipment, offer outstanding customer support and ...



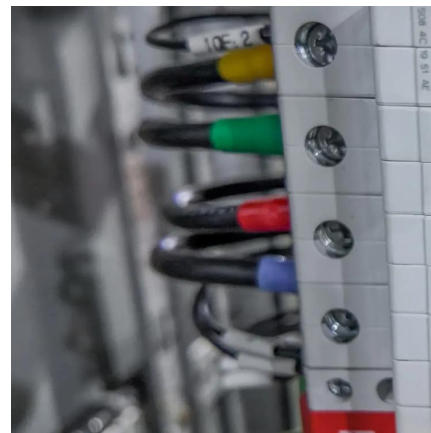


[Superior Power Solutions From American Power ...](#)

APS delivers power solutions for armored, security, marine, & specialty vehicles--engineered for reliability, performance, & mission-critical success.

Windmill Aeration & Windmill Pumps

Windmill Aeration & Windmill Pumps Using the power of the wind for aerating a pond or pumping water. If you are considering a windmill aeration system, ...



[Superior Power Solutions From American Power Systems](#)

APS delivers power solutions for armored, security, marine, & specialty vehicles--engineered for reliability, performance, & mission-critical success.

Contact Us

For catalog requests, pricing, or partnerships, please visit:
<https://www.bringmethehorizon.eu>