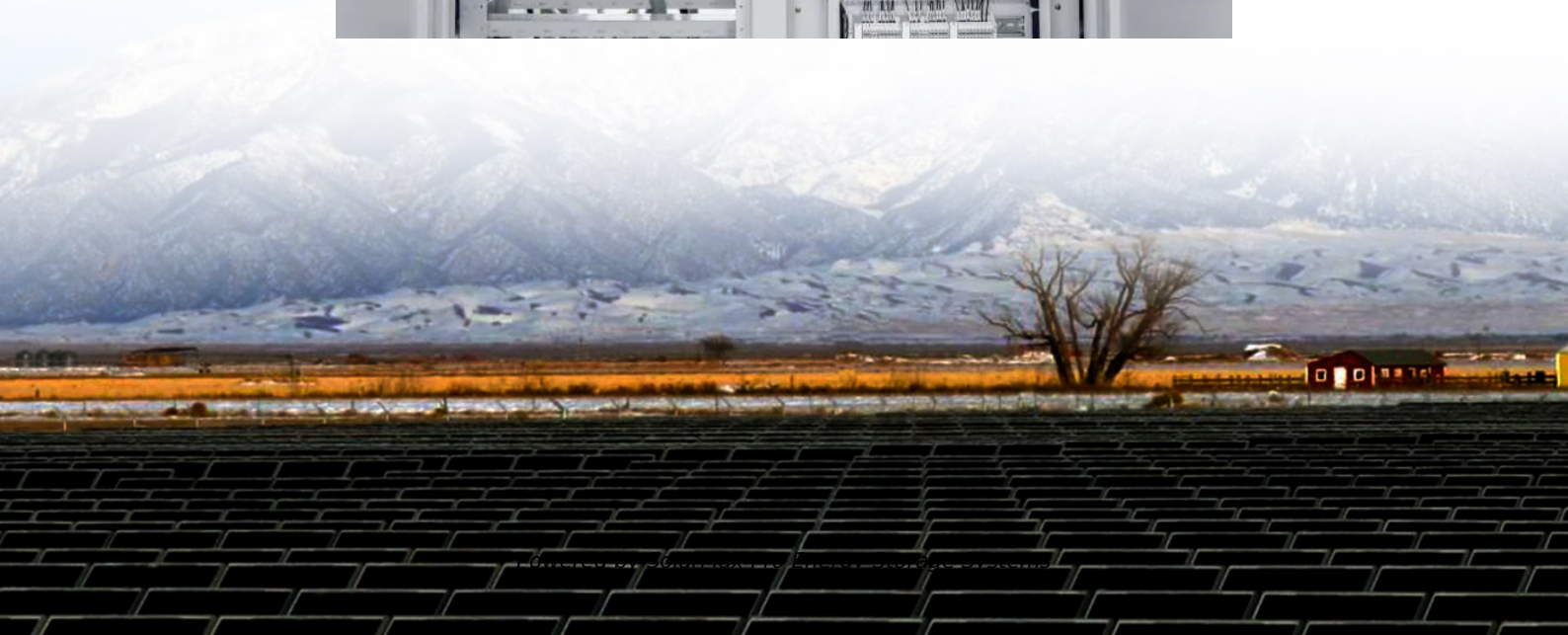




**SolarMax Pro Energy Storage Systems**

## **5g base station power load size**





## Overview

---

How much power does a 5G station use?

The power consumption of a single 5G station is 2.5 to 3.5 times higher than that of a single 4G station. The main factor behind this increase in 5G power consumption is the high power usage of the active antenna unit (AAU). Under a full workload, a single station uses nearly 3700W.

Why does 5G use more power than 4G?

The data here all comes from operators on the front lines, and we can draw the following valuable conclusions: The power consumption of a single 5G station is 2.5 to 3.5 times higher than that of a single 4G station. The main factor behind this increase in 5G power consumption is the high power usage of the active antenna unit (AAU).

What is a 5G base station?

A 5G base station is mainly composed of the baseband unit (BBU) and the AAU — in 4G terms, the AAU is the remote radio unit (RRU) plus antenna. The role of the BBU is to handle baseband digital signal processing, while the AAU converts the baseband digital signal into an analog signal, and then modulates it into a high-frequency radio signal.

How do engineers design 5G base stations?

Engineers designing 5G base stations must contend with energy use, weight, size, and heat, which impact design decisions. 5G New Radio (NR) uses Multi-User massive-MIMO (MU-MIMO), Integrated Access and Backhaul (IAB), and beamforming with millimeter wave (mmWave) spectrum up to 71 GHz.

What is a small cell in 5G?

Small cells are a new part of the 5G platform that increase network capacity and speed, while also having a lower deployment cost than macrocells. The compact size of a small cell requires that all components – especially power



converters – provide high efficiency, better thermals and eventually the best power density possible.

Should power consumption models be used in 5G networks?

This restricts the potential use of the power models, as their validity and accuracy remain unclear. Future work includes the further development of the power consumption models to form a unified evaluation framework that enables the quantification and optimization of energy consumption and energy efficiency of 5G networks.



## 5g base station power load size

---



### Power Consumption Modeling of Different Base ...

A 5G base station has the highest power consumption, but this is offset by much faster WLAN speeds, which can result in energy savings in ...

### **Small Cells, Big Impact: Designing Power Solutions for 5G ...**

The need to increase the number of base stations to provide wider and more dense coverage has led to the creation of small cells. Small cells are a new part of the 5G platform that increase ...



### What is 5G base station architecture?

Before you can think about 5G network components, you need to consider the base station. To get started, find out what you need to know about the architecture.

### **Size, weight, power, and heat affect 5G base station designs**

These capabilities provide massive connectivity, multi-gigabit speeds, and single-digit-millisecond



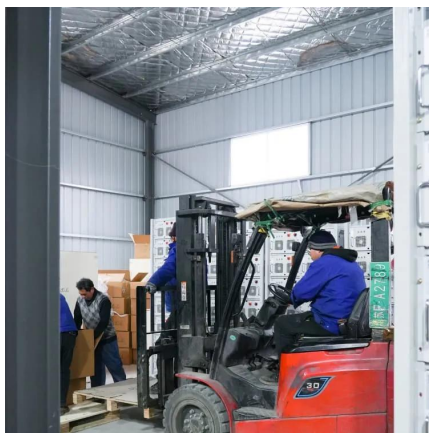


latencies that help distinguish 5G from 4G and older generation wireless ...



### **Peak power shaving in hybrid power supplied 5G base station**

The high-power consumption and dynamic traffic demand overburden the base station and consequently reduce energy efficiency. In this paper, an energy-efficient hybrid power supply ...



### **Electric load characteristics analysis of 5G base stations in ...**

Electric load characteristics analysis of 5G base stations in different type of area Published in: CIRED 2022 Shanghai Workshop Article #: Date of Conference: 21-22 September 2022



### **Comparison of Power Consumption Models for 5G Cellular ...**

Power consumption models for base stations are briefly discussed as part of the development of a model for life cycle assessment. An overview of relevant base station power ...





## Comparison of Power Consumption Models for 5G Cellular Network Base

Power consumption models for base stations are briefly discussed as part of the development of a model for life cycle assessment. An overview of relevant base station power ...

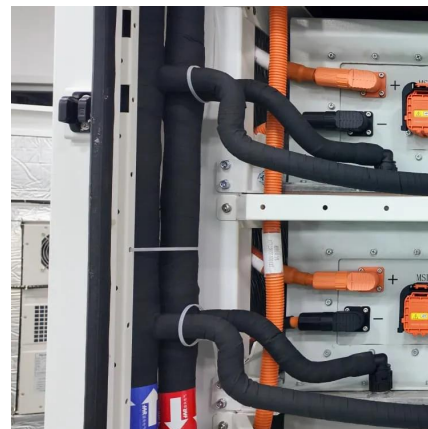


## Base Station ON-OFF Switching in 5G Wireless Networks: ...

Abstract--To achieve the expected 1000x data rates under the exponential growth of traffic demand, a large number of base stations (BS) or access points (AP) will be deployed in the ...

## Optimal expansion planning of 5G and distribution

Abstract The integration of 5G base station (5G BS) clusters and edge data services introduces novel digital loads (NDLs) into the distribution system (DS), significantly ...



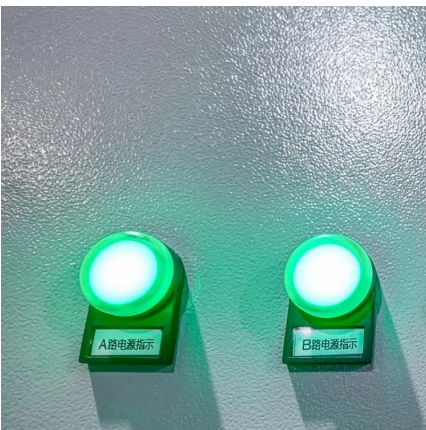
## Analysis of power consumption in standalone 5G network and ...

This paper proposes two modified power consumption models that would accurately depict the power consumption for a 5G base station in a standalone network and a novel ...



### Optimal configuration of 5G base station energy storage

created the demand for backup energy storage batteries. To maximize overall benefits for the investors and operators of base station energy storage, we proposed a bi-level optimization ...



### **Energy-efficiency schemes for base stations in 5G heterogeneous**

In today's 5G era, the energy efficiency (EE) of cellular base stations is crucial for sustainable communication. Recognizing this, Mobile Network Operators are actively prioritizing EE for ...

### **The power supply design considerations for 5G base stations**

During quiescent periods--typically 5 ms to 100 ms--the PSU must minimize all load power with the basic functions of the antenna unit remaining active. It also must be able to ...







## Optimal energy-saving operation strategy of 5G base station with

Under full-load conditions, the power consumption of 5 G base stations is approximately 3-4 times that of 4 G base stations, which has a notable impact on energy consumption and ...

## 5G infrastructure power supply design considerations ...

5G Infrastructure Architecture And Power Supplies The 5G network architecture uses multiple types of power supplies. Requirements include units ...



## What is the Power Consumption of a 5G Base Station?

These 5G base stations consume about three times the power of the 4G stations. The main reason for this spike in power consumption is the addition of massive MIMO and ...

## The power supply design considerations for 5G base ...

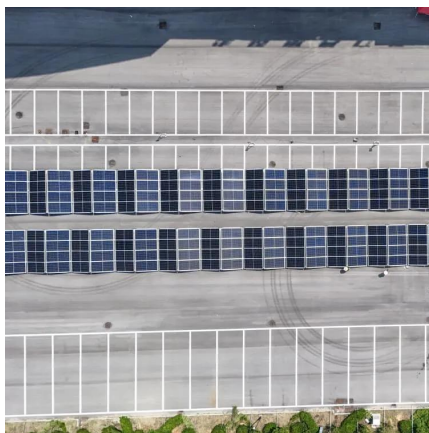
During quiescent periods--typically 5 ms to 100 ms--the PSU must minimize all load power with the basic functions of the antenna unit remaining ...





## Modelling the 5G Energy Consumption using Real-world ...

This paper proposes a novel 5G base stations energy consumption modelling method by learning from a real-world dataset used in the ITU 5G Base Station Energy Consumption Modelling ...



## Optimizing cell association in 5G and beyond networks: a modified load

Heterogeneous Networks (HetNets) are now considered a significant architecture of fifth generation (5G) and future generation networks since they have been proven to be a ...



## [Optimal configuration of 5G base station energy storage](#)

Abstract: The high-energy consumption and high construction density of 5G base stations have greatly increased the demand for backup energy storage batteries. To maximize overall ...





## Electric load characteristics analysis of 5G base stations in ...

In this paper, hourly electric load profiles of 5G BSs in residential, shopping, and office areas for future 5G application are simulated to compare and investigate their ...



## Front Line Data Study about 5G Power Consumption

The power consumption of a single 5G station is 2.5 to 3.5 times higher than that of a single 4G station. The main factor behind this increase in 5G power consumption is the high power ...

## Contact Us

For catalog requests, pricing, or partnerships, please visit:  
<https://www.bringmethehorizon.eu>