



SolarMax Pro Energy Storage Systems

5G base station electricity consumption ratio





Overview

How much power does a 5G station use?

The power consumption of a single 5G station is 2.5 to 3.5 times higher than that of a single 4G station. The main factor behind this increase in 5G power consumption is the high power usage of the active antenna unit (AAU). Under a full workload, a single station uses nearly 3700W.

Is 5G base station power consumption accurate?

esan@huawei.com Abstract—The energy consumption of the fifth generation (5G) of mobile networks is one of the major concerns of the telecom industry. However, there is not currently an accurate and tractable approach to evaluate 5G base stations (BSs) power consumption. In this article, we pr.

Is 5G more energy efficient than 4G?

Although the absolute value of the power consumption of 5G base stations is increasing, their energy efficiency ratio is much lower than that of 4G stations. In other words, with the same power consumption, the network capacity of 5G will be as dozens of times larger than 4G, so the power consumption per bit is sharply reduced.

How does mobile data traffic affect the energy consumption of 5G base stations?

The explosive growth of mobile data traffic has resulted in a significant increase in the energy consumption of 5G base stations (BSs).

What is 5G BS power consumption?

The 5G BS power consumption mainly comes from the active antenna unit (AAU) and the base band unit (BBU), which respectively constitute BS dynamic and static power consumption. The AAU power consumption changes positively with the fluctuation of communication traffic, while the BBU power consumption remains basically unchanged , , .



Should power consumption models be used in 5G networks?

This restricts the potential use of the power models, as their validity and accuracy remain unclear. Future work includes the further development of the power consumption models to form a unified evaluation framework that enables the quantification and optimization of energy consumption and energy efficiency of 5G networks.



5G base station electricity consumption ratio

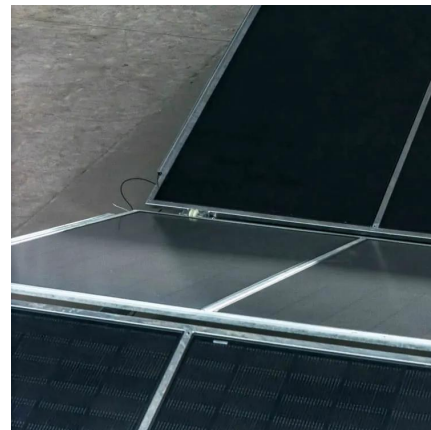


Why does 5g base station consume so much power ...

The power consumption of the 5G base station mainly comes from the AU module processing and conversion and high power-consuming high ...

Comparison of Power Consumption Models for 5G Cellular ...

In order to quantify and optimize the energy consumption of mobile networks, theoretical models are required to estimate the effect of relevant parameters on the total ...



Threshold-based 5G NR base station management for energy ...

In spite of promising outcomes in optimizing energy usage for Radio Access Network (RAN) Base Station (BS) hardware, deployment, and resource manageme...

Multi-objective interval planning for 5G base station ...

Large-scale deployment of 5G base stations has brought severe challenges to the economic



operation of the distribution network,
furthermore, ...



How Much Power Does 5G Base Station Consume?

Have you ever wondered how much energy our hyper-connected world is consuming? 5G base stations, the backbone of next-gen connectivity, now draw 3-4 times more power than their 4G ...

Green Future Networks

The power consumption of antenna unit accounts for about 90% of the total consumption of the base station, and it is the main component of the power consumption of the base station.



Samsung Offers 5G Operational Efficiency through ...

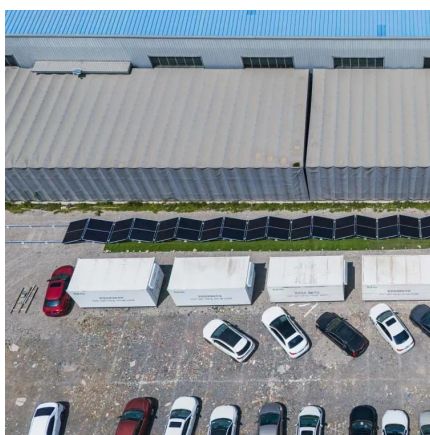
While 5G enables a new level of end-user experience, new devices and use cases often demand high network usage. Therefore, a typical ...





Base station energy storage cell ratio

With the highest percentage of energy consumption, energy conservation of 5G base stations becomes a major pain point for operators. Within the coverage area of 5G macro stations or ...



What is the Power Consumption of a 5G Base Station?

These 5G base stations consume about three times the power of the 4G stations. The main reason for this spike in power consumption is the addition of massive MIMO and ...

A technical look at 5G energy consumption and performance

To understand this, we need to look closer at the base station power consumption characteristics (Figure 3). The model shows that there is significant energy consumption in the ...



5G Base Stations: The Energy Consumption Challenge

Early deployments indicate that 5G base stations require 2.5-3.5 times more power compared to a 4G one. Moreover, C-band, i.e., 3.4 GHz to 4.2 GHz, is deemed as the most popular 5G ...



Machine Learning and Analytical Power Consumption ...

When symbol shutdown is activated, the AAU switches off the MCPAs, and its power consumption is reduced to the sum of the baseline power consumption, P_0 , the baseband ...

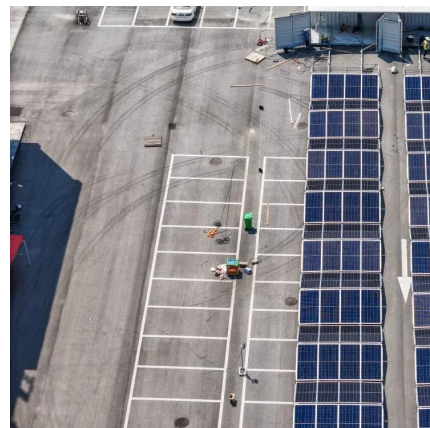


Machine Learning and Analytical Power Consumption Models for 5G Base

The energy consumption of the fifth generation (5G) of mobile networks is one of the major concerns of the telecom industry. However, there is not currently an accurate and ...

Towards Energy Efficient RAN: From Industry Standards to ...

Abstract--As 5G deployments continue throughout the world, concerns regarding its energy consumption have gained significant traction. This article focuses on radio access networks ...





Optimal configuration for photovoltaic storage system capacity in 5G

Base station operators deploy a large number of distributed photovoltaics to solve the problems of high energy consumption and high electricity costs of 5G base stations. In this ...

Measurements and Modelling of Base Station Power Consumption under Real

Base stations represent the main contributor to the energy consumption of a mobile cellular network. Since traffic load in mobile networks significantly varies during a working or weekend ...

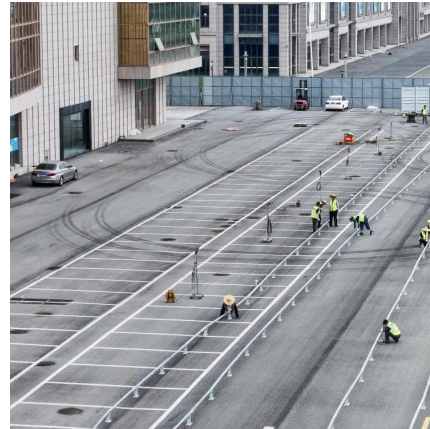


A Holistic Study of Power Consumption and Energy Savings ...

The power consumption of a 5G base station using massive MIMO is dominated by the power consumption of the radio units whose power amplifier(s) consume most of the energy, thus ...

A technical look at 5G energy consumption and performance

This paper proposes a novel 5G base stations energy consumption modelling method by learning from a real-world dataset used in the ITU 5G Base Station Energy Consumption Modelling ...



[Front Line Data Study about 5G Power Consumption](#)

The power consumption of a single 5G station is 2.5 to 3.5 times higher than that of a single 4G station. The main factor behind this increase in 5G power consumption is the high power ...



Comparison of Power Consumption Models for 5G Cellular Network Base

In order to quantify and optimize the energy consumption of mobile networks, theoretical models are required to estimate the effect of relevant parameters on the total ...



[Carbon emissions of 5G mobile networks in China](#)

Here we develop a large-scale data-driven framework to quantitatively assess the carbon emissions of 5G mobile networks in China, where over 60% of the global 5G base ...





Power consumption based on 5G communication

At present, 5G mobile traffic base stations in energy consumption accounted for 60% ~ 80%, compared with 4G energy consumption increased three times. In the future, high-density ...



Energy consumption optimization of 5G base stations considering

An energy consumption optimization strategy of 5G base stations (BSs) considering variable threshold sleep mechanism (ECOS-BS) is proposed, which includes the initial ...

What is 5G Energy Consumption?

The 5G network is a dynamic system that consumes energy continually and responds to spikes in network activity. Over 70% of this energy is consumed by RAN antennas, radio units, and ...



Modelling the 5G Energy Consumption using Real-world ...

This paper proposes a novel 5G base stations energy consumption modelling method by learning from a real-world dataset used in the ITU 5G Base Station Energy Consumption Modelling ...



Contact Us

For catalog requests, pricing, or partnerships, please visit:
<https://www.bringmethehorizon.eu>