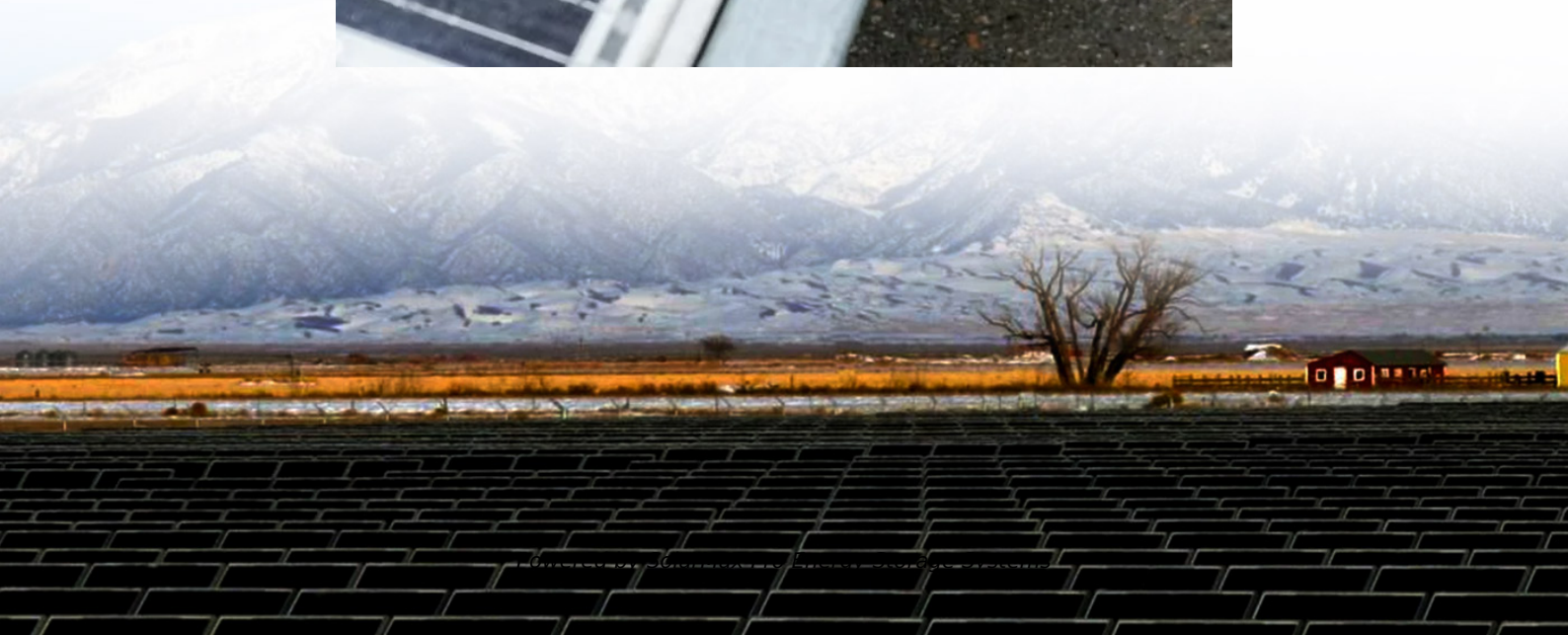
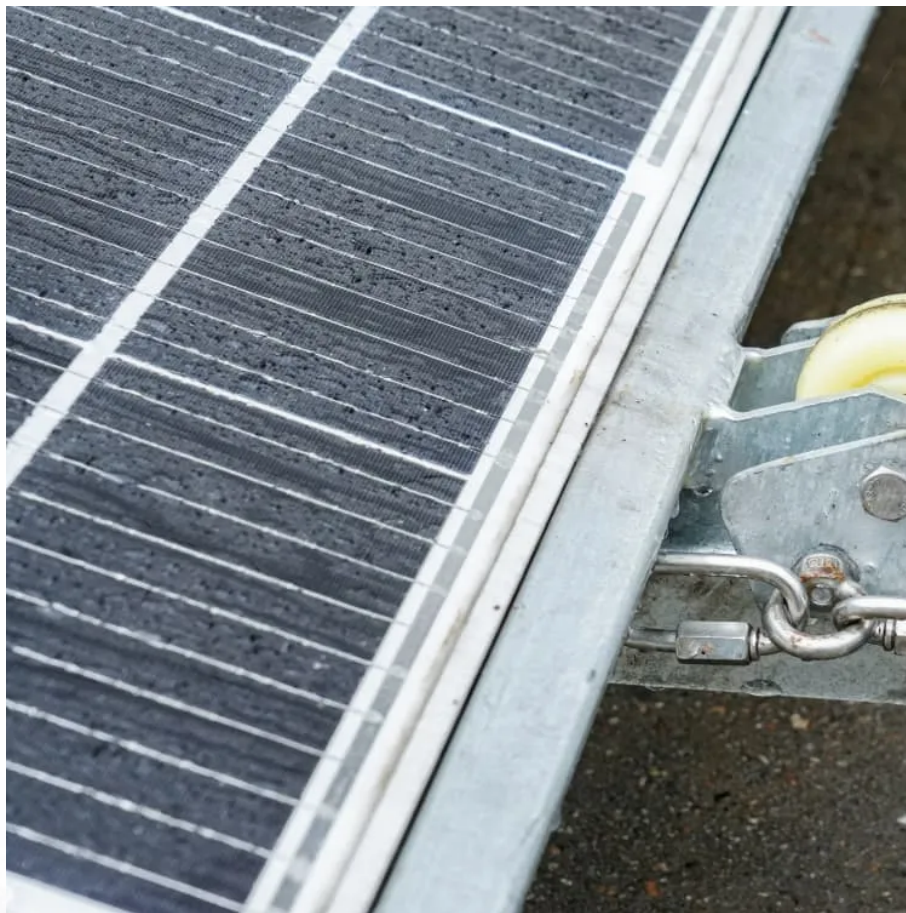




SolarMax Pro Energy Storage Systems

5 groups of 60v lithium battery packs connected in series





Overview

What is the capacity of a battery pack?

The capacity of the battery pack is the sum of the capacities of the individual batteries. Again, make sure that all of the batteries are the same size, that is that they have the same amp-hour capacity. There are many ways to connect a group of batteries in both series and parallel at the same time.

Why are lithium batteries connected in series?

Lithium batteries are connected in series when the goal is to increase the nominal voltage rating of one individual lithium battery - by connecting it in series strings with at least one more of the same type and specification - to meet the nominal operating voltage of the system the batteries are being installed to support.

How many batteries are in a series connection?

In each of the examples, the 4 batteries are identified as A, B, C, and D. Example 1, shown in Figure 4, has 2 pairs of series connected batteries joined in a single parallel connection. In this type of arrangement, we refer to each pair of series connected batteries as a "string". Batteries A and C are in series. Batteries B and D are in series.

What is a battery pack voltage?

The battery voltages add together to determine the battery pack voltage. In this example the resulting pack voltage is 24 volts. The capacity of the battery pack is the same as that of an individual battery. This assumes that the capacities of the individual batteries are the same. In fact, this is a must.

What batteries are included in the battery library?

The library includes information on a number of batteries, including Samsung (ICR18650-30B, INR18650-25R), Sony (US18650GR, US18650VTC6), LG (LGABHG21865, LGDBMJ11865), Panasonic (UR18650NSX, NCR18650B), and



many more. Max. Cell Voltage (V): Pack Max. Voltage: 0 Max.

Can a group of batteries be connected at the same time?

There are many ways to connect a group of batteries in both series and parallel at the same time. This is common practice in many battery power appliances, particularly in electric vehicles and large UPS systems where the battery packs require large voltages and amp-hour capacities.



5 groups of 60v lithium battery packs connected in series



Run two (almost) same battery packs in parallel

Hello everyone, I have two battery packs built with LG MH1 18650 cells which each have a 50A BMS (60V/30AH). One is a 2-3 years older than the other though. I'd really like to ...

Calculate the number of series and parallel connections for lithium

In a lithium battery pack, multiple lithium batteries are connected in series to obtain the required operating voltage. If higher capacity and greater current are required, then ...



How to Calculate the Number of Lithium Batteries in Series or

The capacity varies depending on the cell size, material, and manufacturer. Due to the limited voltage and capacity of single batteries, series and parallel combinations are required in actual ...

Can You Mix Different Capacity Lithium Batteries?

Yes, you can mix different capacity lithium batteries, whether a normal 12V 100Ah battery



or a Lithium server rack battery. You can combine ...



[How To Connect Batteries In Series and Parallel](#)

Before proceeding with this tutorial, we would like to point out that batteries should only be connected if they are of the same voltage, capacity rating, and are of the same batch. ...

[How To Connect Batteries In Series and Parallel](#)

Before proceeding with this tutorial, we would like to point out that batteries should only be connected if they are of the same voltage, capacity rating, and are of the same batch. ...



Cells Per Battery Calculator

When designing a battery pack, cells can be connected in two ways: in series to increase voltage, or in parallel to increase capacity. Series connections add the voltages of ...



[connecting 5 12v lifepo4 batteries in series?](#)

Hello, guys, I know my question is no related with solar but is with batteries. I bought a chinese electric quadricycle and have 5 12 v 70 ah led acid batteries with a range ...



How to Calculate the Number of Lithium Batteries in Series or

In our example, the smaller 3 Ah battery will drain faster (it's just simply a smaller batter) and its voltage will then drop. However, the larger 5 ...

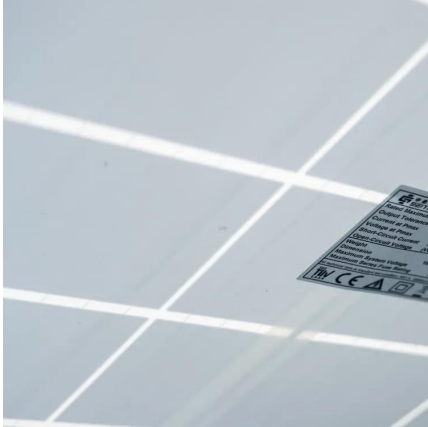
BMS connection cables with series / parallel lithium batteries

New to this site, based in Wales UK. With a 3 kW solar array, I wish to install 16 lithium batteries (8 in series x 2) and then in parallel giving 24 volts. This was advice from ...



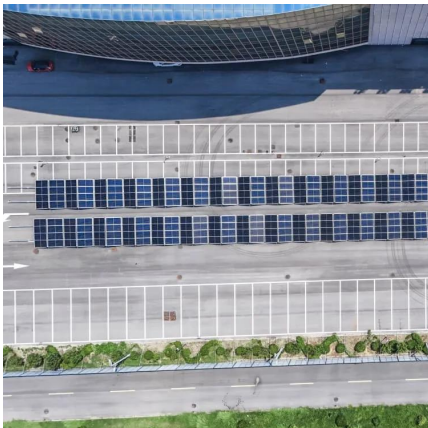
[Battery Pack Calculator , Good Calculators](#)

Here's a useful battery pack calculator for calculating the parameters of battery packs, including lithium-ion batteries. Use it to know the voltage, capacity, energy, and maximum discharge ...



Cells in Series and Parallel - NPP POWER

Lithium cells series and parallel connection:
There are both parallel and series combinations in the middle of the battery pack so that the voltage is increased and the ...



Cells in Series and Parallel - NPP POWER

Lithium cells series and parallel connection:
There are both parallel and series combinations in the middle of the battery pack so that the voltage is ...

Batteries in Series and Parallel Explained

Batteries in Series and Parallel Explained
Batteries can either be connected in series, parallel or a combination of both. In a series circuit, electrons travel in ...





[How to Properly Connect and Charge Lithium Batteries?](#)

Lithium batteries require specific charging protocols to ensure safety and longevity. Proper connections involve verifying polarity, using compatible chargers, and monitoring ...

A deep analysis of lithium battery in series and parallel

Electric motorcycles: Generally, electric motorcycle battery packs use series configurations for batteries to increase input voltage and provide stronger ...



[Batteries and Chargers Connected in Series and Parallel](#)

Learn how to connect batteries in series and parallel for different voltage and amp-hour capacities. Battery Tender® offers detailed instructions and diagrams for safely charging and configuring ...

PRORUN PB16050 60 -Volt, 5 Ah 1-Pack Lithium Ion (Li-ion) Battery ...

The PRORUN 60-volt Lithium-Ion Batteries are the culmination of decades of outdoor power equipment engineering, innovation, design and manufacturing. This heavy-duty ...



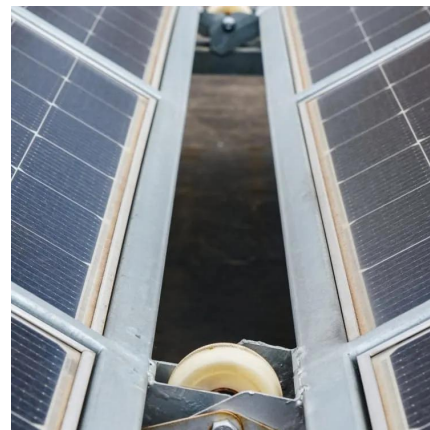
60V Lithium Battery

MANLY 60V lithium battery offers adjustable specs and a plug-and-play design for easy installation. Ideal for home or industrial use, Our battery supports series ...



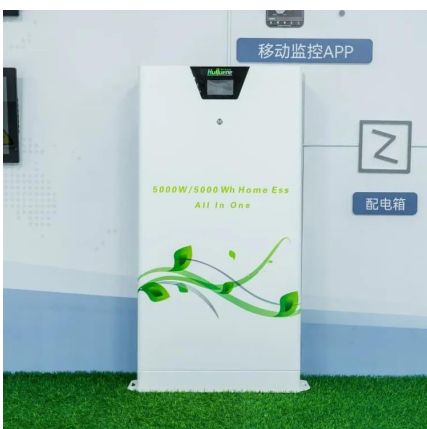
[Everything About Lithium Battery Series & Parallel](#)

Learn how to safely connect lithium batteries in series and parallel. Avoid risks, extend battery life and build reliable power systems with our expert guide.



[Lithium Series, Parallel and Series and Parallel](#)

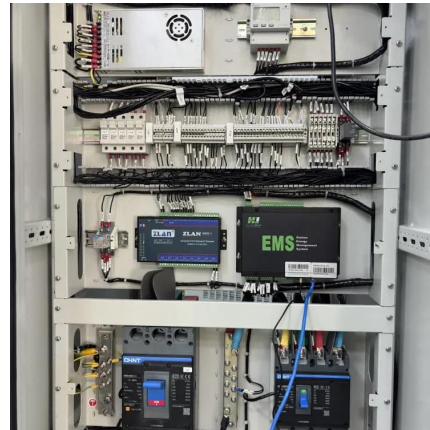
Connecting multiple lithium batteries into a string of batteries allows us to build a battery bank with the potential to operate at an increased voltage, or with increased capacity and runtime, or both.





Battery Series and Parallel Connection Calculator

To wire multiple batteries in series, you connect each one by joining the positive of one to the negative of the next. This setup increases the total voltage but keeps the capacity ...



Connecting batteries in series - BatteryGuy Knowledge Base

In our example, the smaller 3 Ah battery will drain faster (it's just simply a smaller batter) and its voltage will then drop. However, the larger 5 Ah battery will still be maintaining ...

Battery Packs In Series Or Parallel: Key Differences And Wiring

Connecting battery packs in series increases the output voltage while keeping the capacity the same. In contrast, wiring them in parallel boosts the total capacity without ...



Contact Us

For catalog requests, pricing, or partnerships, please visit:
<https://www.bringmethehorizon.eu>