



SolarMax Pro Energy Storage Systems

4G base station outdoor unit installation





Overview

What is a 4G & 5G LTE base station?

Covering all common 4G and 5G LTE bands, the base stations feature software-defined radio, allowing great flexibility of operation and future upgrade paths. The CableFree Advanced 4G and 5G LTE SDR (software-defined radio) Small Cell Base Station – Outdoor Version – is suitable for a wide variety of applications.

Does CableFree offer a 5Ghz base station?

CableFree offers Band 46 5GHz LTE Base Station and Outdoor CPE devices for operation in Unlicensed 5GHz spectrum, enabling smaller operators and private customers to build LTE without requiring access to licensed spectrum. Band 46 covers 5150 – 5925MHz and uses TDD-LTE technology. Contact CableFree for details.

What is a 4G & 5G LTE SDR base station?

The CableFree Advanced 4G and 5G LTE SDR (software-defined radio) Small Cell Base Station – Outdoor Version – is suitable for a wide variety of applications. Covering all common 4G and 5G LTE bands, the base stations feature software-defined radio, allowing great flexibility of operation and future upgrade paths.

Do you need a 2G base station?

As such, grab your Faraday cages and lead-lined fridges, and make sure that you don't cause any illegal interference if you do end up exploring this path. We've generally seen 2G base stations over the years, but with the sunset of 2G, those have only been useful in an increasingly low number of countries, and, every once in a while, a hacker camp.

What is a CableFree Emerald 4G & 5G LTE base station?

All of the the CableFree range of LTE products feature latest generation



technology and upgradable features for future-proof networking and performance. CableFree Emerald 4G & 5G LTE Software Defined Base Stations with advanced features and “stand alone” capability for private networks.

What is CableFree 4G & 5G LTE SDR - outdoor version?

The CableFree 4G and 5G LTE SDR (software-defined radio) Small Cell Base Station - Outdoor Version - is suitable for a wide variety of applications.



4G base station outdoor unit installation

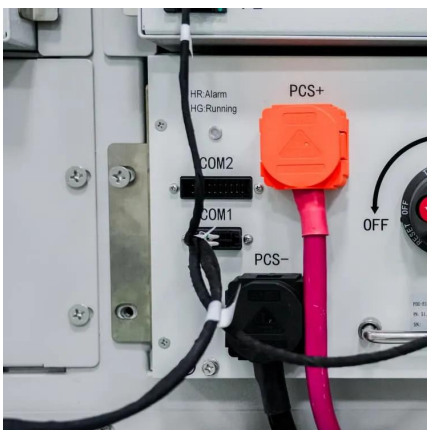


[WSS 4G System Base-Station Installation Manual](#)

This section presents the physical characteristics of the WSS 4G System, including the Aircraft Base Radio (ABR), Full Duplex Quad (FDQ) Antenna, and High- Performance Blade (HPB) ...

[Nokia MetroSite GSM Base Station, Product Description](#)

The optimised RF performance, the versatile installation options, and the flexible radio transmission solution, Nokia MetroHopper last-kilometer access (for more information, refer to ...



H3C BBU5200 Baseband Unit

The BBU5200 can be used with outdoor RRUs as the BBU for outdoor micro base stations. It can also serve as the BBU for indoor distributed wireless mobile communication systems, and can ...

TEMPUS-AG-4G Base Station

During the first installation or if a long time has passed without having had a charge / discharge cycle, it is necessary to charge the TEMPUS-



AG-4G battery, turned off, for 24 hours with 230 ...



Sentry 4G-900 Pico Base Station

This user guide provides essential product functionality with all the information necessary to professionally install and configure the Sentry 4G-900 Pico Base Station.



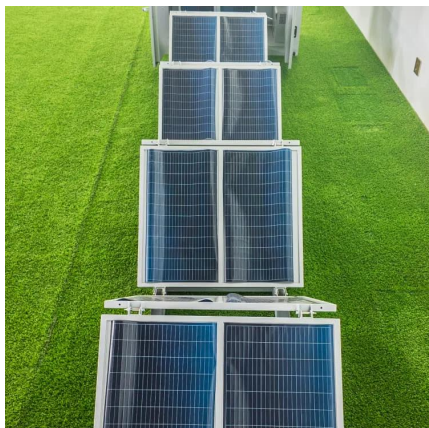
[Outdoor 4G LTE CPE Installation Guide . PPTX](#)

The document provides an installation guide for an outdoor 4G CPE device. It includes: - An overview of the device's features such as its high gain antenna, rugged IP67 enclosure, ...



CableFree Outdoor 4G & 5G LTE SDR Small Cell Base Station

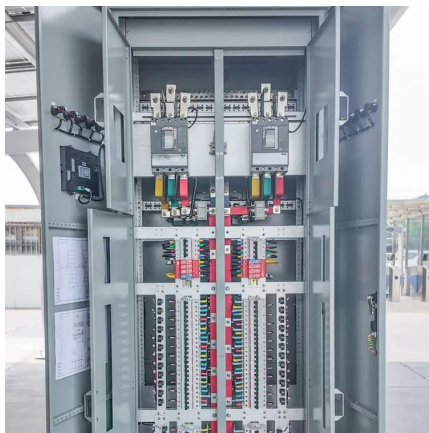
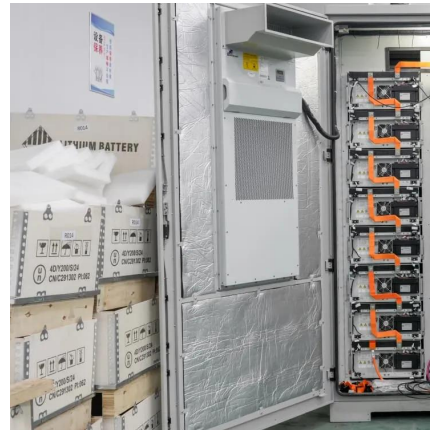
Experience CableFree's 4G & 5G LTE Small Cell outdoor base stations with software-defined radio for great flexibility, high performance & low operation costs.





[Building Your Own 4G LTE Base Station](#)

Get your hardware ready and strap in, as [MaFrance351] guides you through setting up your own base station, with extreme amounts of detail outlining anything you could get ...

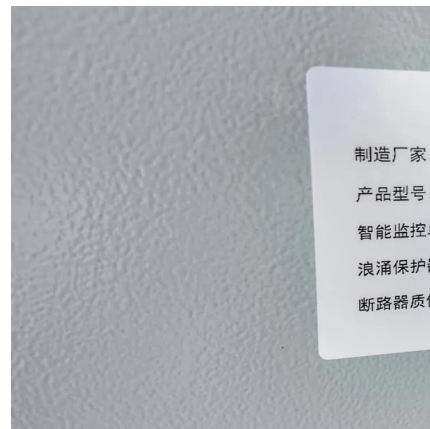


[Conduit® IP67 Base Station Cellular Industrial...](#)

Bundled for easy deployment, the solution includes a Conduit with a LoRa mCard(TM), IP67 enclosure and LoRa antenna to improve outdoor range. It also ...

One Box Base Station

Hytera's small base station product has an integrated design with small size and easy installation, which can greatly reduce the customer's CAPEX and OPEX. The portfolio is divided into two ...



[AIRSPAN AIR4G INSTALLATION MANUAL Pdf ...](#)

Air4G is an outdoor radio that is mounted outside on a pole or wall. Air4G is available in numerous frequency bands and in numerous channels. For more ...



Compact Outdoor Cabinet for 5G & 4G Base Stations

Space-saving outdoor cabinet designed for 5G and 4G base station equipment. Provides reliable protection and easy deployment in telecom networks.



CableFree Outdoor 4G & 5G LTE SDR Small Cell ...

Experience CableFree's 4G & 5G LTE Small Cell outdoor base stations with software-defined radio for great flexibility, high performance & low operation ...



4G & 5G LTE Base Station

CableFree offers Band 46 5GHz LTE Base Station and Outdoor CPE devices for operation in Unlicensed 5GHz spectrum, enabling smaller operators and private customers to build LTE ...



Application Note: Distributed Base Stations

Distributed Base Stations The most popular type of Wireless Base Station deployment (cell site) consists of a Base Transceiver Station (BTS) located in close proximity to the antenna tower.

...

Application Note: Distributed Base Stations

All-outdoor, zero-footprint BTS, with all components located on the tower (essentially multiple boxes on the tower that travel via a combination of coax to the antennas and fiber/copper to ...



DBS5900 Distributed Base Stations -- Huawei Enterprise

The distributed architecture is adopted to separate the RF unit part of the base station from the baseband unit part, connecting the two parts through optical fiber, which minimizes the feeder ...

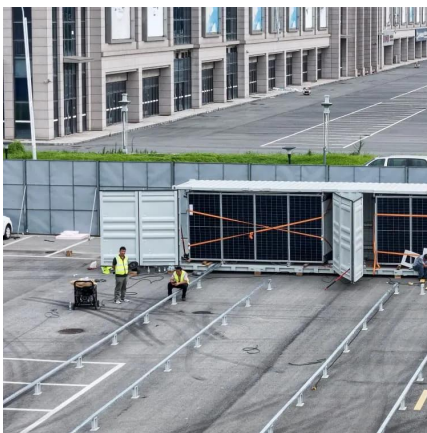
Conduit® IP67 Base Station Cellular Industrial Gateways

Bundled for easy deployment, the solution includes a Conduit with a LoRa mCard(TM), IP67 enclosure and LoRa antenna to improve outdoor range. It also provides a choice of cellular 4G ...



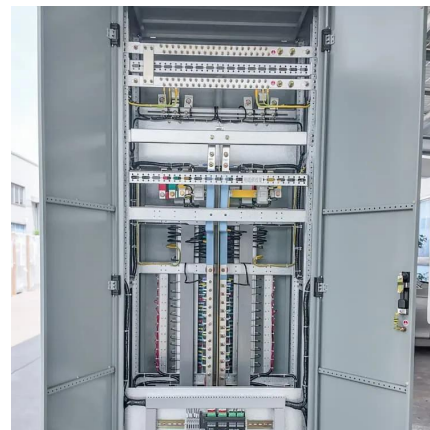
Base Station

Network design, RAN-project planning, base station/BTS site-mapping/site surveying, deployment, engineering, design, integration verification, equipment installation, integration ...



Introduction of base station and Remote Radio Unit

Base Station, generally refers to the "public mobile communication base station", (abbr.: BS), the base station is used to provide signals to mobile phones. It usually consists of ...



Emerald Cellular Product Range (4G & 5G LTE)

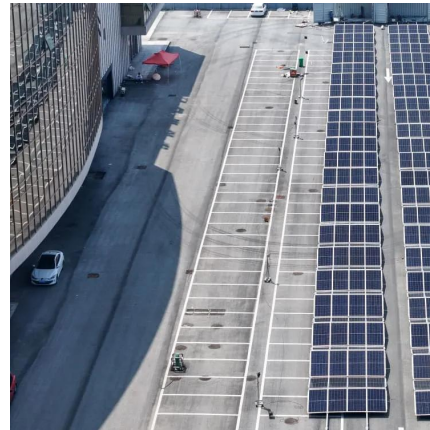
4G & 5G LTE networks using CableFree Emerald 4G & 5G LTE SDR Small Cell base stations enjoy great flexibility, high performance as well as very low cost of operation and ownership. ...





AIRSPAN AIR4G INSTALLATION MANUAL Pdf Download , ManualsLib

Air4G is an outdoor radio that is mounted outside on a pole or wall. Air4G is available in numerous frequency bands and in numerous channels. For more details please consult the Air4G ...



Contact Us

For catalog requests, pricing, or partnerships, please visit:
<https://www.bringmethehorizon.eu>