



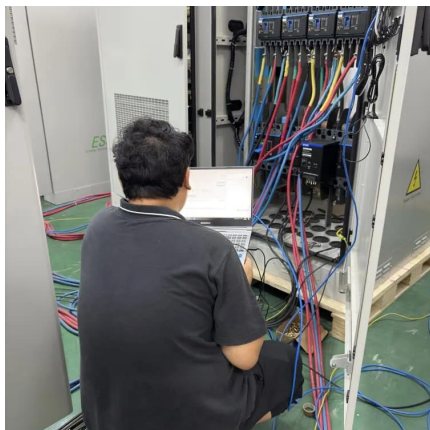
SolarMax Pro Energy Storage Systems

48v inverter with 52v battery





48v inverter with 52v battery

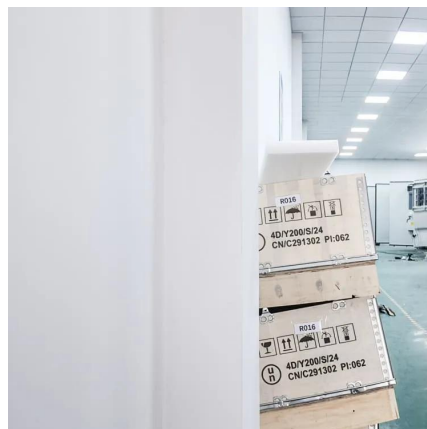


Upgrading from 48 to 52 volt battery

48V and 4.2V are connected in series to create effective 52V 20 Ah battery. The Ah of 4.2V is much higher than that of 48V. The reason is 4.2V battery does not have a BMS and ...

Using a 52v unit pack power battery on 48 volt hub motor.

All 48v controllers can handle 52v. The hard limit is based the power MOSFETs inside the controllers, which are usually made to switch 60v max. A fully charged 52v battery is ...



WILL A 52V BATTERY WORK WITH A 48V EBIKE??

A 52v battery will usually give more battery life than a 48v battery under the same conditions. A 52v battery will not give such a big "power drop" when the battery gets to around half charge ...

What Size Inverter To Charge E-Bike Battery? [With ...

However, finding the right inverter size and a proper way of charging the e-bike battery can

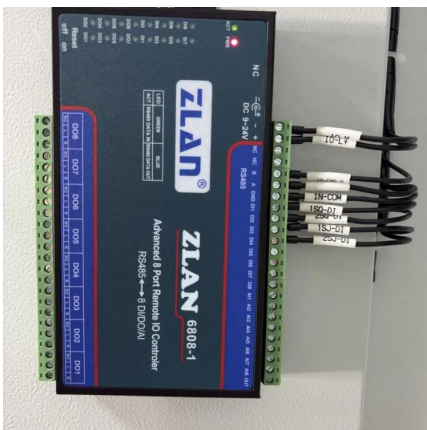


help you in times of need. So, take help from this guide whenever ...



51.2V LiFePO4 vs 48V: Which Battery Voltage Powers Your Needs?

Voltage impacts performance and compatibility. Understanding the differences is essential for any battery-powered system. 51.2V LiFePO4 batteries use 16 cells, delivering ...



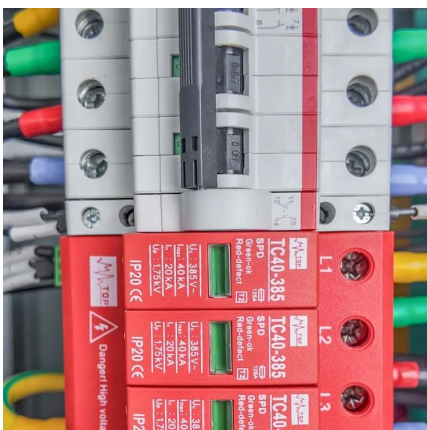
52V VS. 48V BATTERIES, WHICH ONE IS BETTER?

Takeaway: It's simple; you get more power and range with a 52v battery than with a 48V battery. With more power for climbing hills, accelerating faster, and more capacity for ...



Understanding 52V Batteries and Their Compatibility with 48V ...

In summary, using a 52V battery with a 48V motor is generally safe and can offer improved performance. When building a battery pack, understanding the configuration and ...





Amazon : 48v Solar Inverter

Solar Inverter for Home by Genus - Surja Pro 4200 48V - Double Battery Inverter with Solar Maximizer & Pure Sine Wave Output is Our Best Solar Inverter for All Applications 6 Limited ...

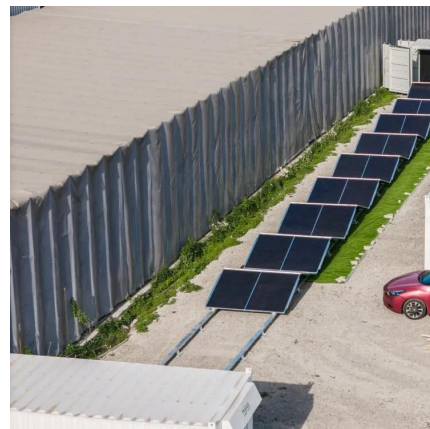


[Can I convert a 52v e-bike battery to 48v? : ...](#)

33 votes, 32 comments. Can I remove the green cell group from a 52v battery to make it 48v? What is the new requirements for the BMS and charging?...

[WILL A 52V BATTERY WORK WITH A 48V EBIKE??](#)

Using a 52v battery will give you better power & performance compared to a 48v battery. Compared to a 48v battery, a 52v battery is more efficient by providing the same or better ...



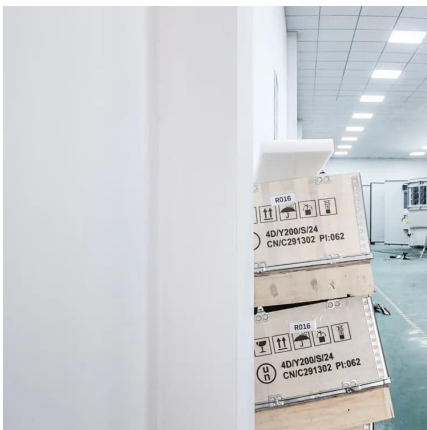
confused about controllers on 48v kits. are they good ...

If the battery has a BMS, then it will be fine. An LVC is a low voltage cutoff, top prevent the battery from running too low. The controller has an LVC and the ...



48 Volt Split Phase Inverter Online

? The split-phase inverter requires 240VAC input and can provide 120VAC or 240VAC output power for all kinds of appliances, and it can output 50 or 60Hz via the SW4. ? AC/Battery ...



What Size Inverter To Charge E-Bike Battery? [With Size Chart]

However, finding the right inverter size and a proper way of charging the e-bike battery can help you in times of need. So, take help from this guide whenever you find yourself in a dilemma on ...

WILL A 52V BATTERY WORK WITH A 48V EBIKE??

Using a 52v battery will give you better power & performance compared to a 48v battery. Compared to a 48v battery, a 52v battery is more efficient by providing the same or ...





eBike lithium batteries can hold an insane amount of ...

eBike lithium batteries can hold an insane amount of power. Has anyone thought about using them for emergency backup power? They should easily be able to ...

Freedom Won FLH Lite Home 15/12

Freedom Won lithium ion battery - FLH Lite Home 15/12 Nominal voltage - 52V Nominal Capacity - 300Ah Length (mm) - 710 Width (mm) - 423 Height (mm) - 365 Typical Weight (kg) - 134.0 ...



Can I use a 52V battery on a 48V ebike? - Booant

If you're considering upgrading your eBike battery, you might wonder: Can I use a 52V battery on a 48V eBike? The short answer is sometimes--but with important caveats.

Inverter LBCO vs Battery Low Voltage Limit

It is strongly recommended to utilize any low battery cut-off (LBCO) features available on your inverter to initiate a shutdown well before reaching the battery's Low Voltage ...



[Installing a 52v battery with a 48v controller? : r/ebike](#)

Hi folks, I'm thinking about installing a 52v em3ev battery with a 48v controller that comes with an 1200w ebikeling kit. Just debating whether to go 52v or stay with 48v.



[Freedom Won Lite Home 30/24 51VDC Lithium Ion ...](#)

LiTE Home and Business 52V Range Model sizes ranging from 5kWh to 80kWh in 52V to suit most "48V" battery inverters This Freedom Lite range includes ...



[Inverter suggestion for 52V Luna Dire Wolf?](#)

Hello, I am looking for a 52V inverter to convert power from my Luna Dire Wolf 52V 21Ah battery to 120AC. This was discussed in an electricbike article (see attached link) ...





Can I Use a 52V Ebike Battery on a 48V Ebike?

Running a 52V eBike battery on a 48V eBike can result in a voltage mismatch that can cause compatibility issues. E-bike systems are designed with specific voltage parameters ...



Contact Us

For catalog requests, pricing, or partnerships, please visit:
<https://www.bringmethehorizon.eu>