



SolarMax Pro Energy Storage Systems

40kw inverter connected to several photovoltaic panels





Overview

How many watts can a 40kW solar inverter handle?

These inverters can handle a range of power sources from 40,000 watts to 49,999 watts. Compare these 40kW commercial solar inverters from ABB, Fronius, SMA, SolarEdge, SatCon, Solectria, Schneider Electric, PV Powered, Power One, or Advanced Energy. Combine them with solar panels for a complete home system to qualify for tax credit and rebates.

Can I connect more solar panels to an inverter?

It's not a good idea to connect more solar panels to an inverter than it's rated for. But if the total power output of the solar panels matches or is within the maximum rated capacity of the inverter, then it's safe and efficient.

How many solar panels can a 5kw inverter handle?

If you're wondering how many solar panels you can put on your inverter, the answer is: it depends. The capacity of an inverter is measured in kilowatts (kW), and most household inverters are between 3kW and 10kW. So, a 5kW inverter could handle around 20 standard 250-watt solar panels. But that's not the whole story.

What are the advantages of a 40kW solar inverter?

IP65 protection level, fan cooling method, has a full range scheme of power protection. 40kW high power three phase solar grid tie inverter with wide voltage range to adapt to the needs of different occasions, lower starting voltage and higher conversion efficiency up to 98%, more stable and reliable for your solar on grid PV system.

How much power does a 5KVA inverter need?

If you are looking to power a 5kva inverter with solar panels, you will need at least 18 250-watt panels. This is because the inverter will require 1,500 watts of power and each panel produces about 250 watts of power. Inverters also



have a peak wattage, which is usually about 50% higher than the continuous wattage.

How many solar panels can a 600V inverter connect?

If an inverter has a maximum input voltage of 600V and each panel produces 40V, you could connect up to 15 panels in series ($15 \times 40V = 600V$). Going over this voltage limit can harm the inverter or make it shut down, making your solar system less effective or even unusable. Equally important is the minimum input voltage.



40kw inverter connected to several photovoltaic panels

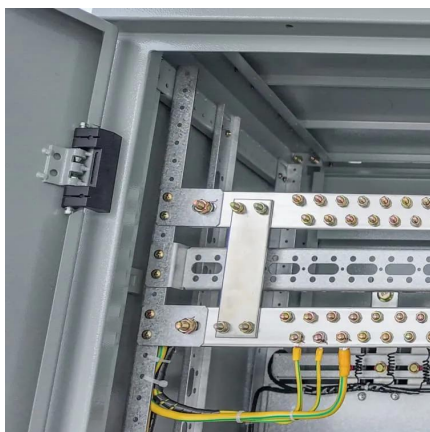
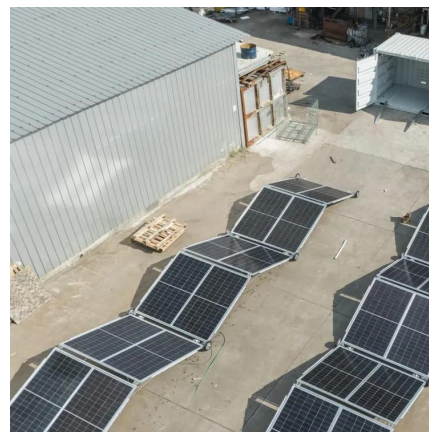


Is it Safe to Have Too Many Solar Panels on an Inverter?

This article explores the critical aspects of matching solar panels with inverters, detailing the risks of overloading, the importance of correct sizing, and effective strategies for ...

Factory Direct 40kw Hybrid Solar Generator With Inverter & Panel

The solar photovoltaic power system connected to the public grid is called on-grid photovoltaic power generation system. The system structure includes solar battery arrays, DC/DC ...



What happens if you connect too many solar panels to ...

When you connect too many solar panels, your inverter may not be able to process all the energy being produced. Consequently, not only will ...

[How Many Solar Panels Can I Connect to an Inverter?](#)

What happens if I connect too many solar panels to an inverter? If you exceed the inverter's



capacity, it "clips" or limits extra power, which reduces efficiency during peak sunlight.



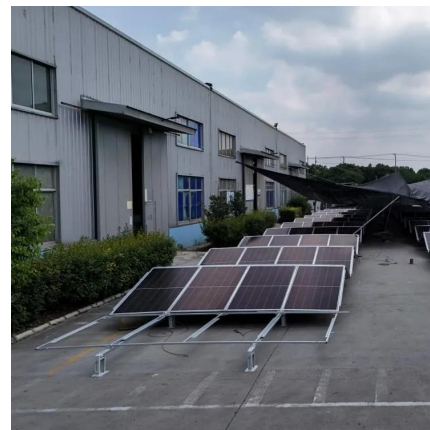
40kW Three Phase Grid Tie Solar Inverter

Strong IP65 protection and a completely sealed cover suitable for harsh environments. The on-grid inverter adopts with no isolation transformer H6 full ...



Grid-connected

Warning: Sunlight cause danger shines to on the Therefore, panel will generate voltage, before connecting material the high DC voltage input line, in series the solar may ...



How to Connect Multiple Photovoltaic Panels to One Inverter

...

Connecting multiple photovoltaic panels to one inverter feels equally chaotic - until you learn the secret handshake. Modern solar systems often require 10-20 panels per inverter, but 72% of ...





How many solar panels can I connect to my Inverter?

I have an inverter 5.5kva Fivestar and purchased some Canadian solar panels but think my inverter might not be able to take all the panels in a ...



How Many Solar Panels Can I Connect to an Inverter? A ...

Learn how to optimize your solar power system by understanding how many solar panels can be connected to an inverter. Explore inverter specifications, wiring configurations, and the role of ...

How Many Solar Panels Can I Connect to an Inverter?

Learn how to optimize your solar power system by understanding how many solar panels can be connected to an inverter. Explore inverter ...



Connecting too many solar panels to the inverter

Connecting too many solar panels to the inverter can be potentially dangerous if not done correctly. One of the main concerns is overloading the inverter, which could lead to ...



How to Connect Multiple Solar Inverters Together?

To connect multiple solar inverters together, you need to ensure the inverters are compatible, follow precise steps for parallel or series connections, and verify ...



How many panels can be added to this inverter : ...

Divide the inverter max PV Isc value by the above answer to calculate the max number of parallel strings $15.6A \div 10.5A = 1.49$ panels. Round down to 1. So ...

Deye HV Inverter 40KW SUN-40K-SG01HP3-EU-BM4 ...

The hybrid inverter has IP65-rated ingress protection, you can install it indoors or outdoors. SUN-40K-SG01HP3-EU-BM4 inverter can connect solar panels and ...





Series, Parallel & Series-Parallel Connection of PV ...

What is a Solar Photovoltaic Array? A Solar Photovoltaic Module is available in a range of 3 WP to 300 WP. But many times, we need power in a range from ...

Best Solar Inverters 2025

We review the best grid-connect solar inverters from the worlds leading manufacturers Fronius, SMA, SolarEdge, Fimer, Sungrow, Huawei, Goodwe, Solis and many ...



Sohang New Energy's 30KW-40KW power range photovoltaic grid-connected

The machine will be used with 1-3kw single-phase single-circuit, 3-5 single-phase dual-circuit and 10-20kw three-phase inverters to fully meet the needs of distributed photovoltaic power ...

40kW Pure Sine Wave Off Grid Solar Inverter

Compact structure 40kW off grid inverter for sales, features high-quality pure sine wave AC output, with good dynamic response, 3 phase 4 wire connection, no ...



[How many solar panels can I connect to my Inverter?](#)

I have an inverter 5.5kva Fivestar and purchased some Canadian solar panels but think my inverter might not be able to take all the panels in a series setup or splitting them into ...



[Solis Three Phase 40kW PV Grid Tie Inverter](#)

Solis Three Phase 40KW PV Grid Tie Inverter
Leading features: Max. efficiency 98.7% IP66 > 150% DC/AC ratio String current up to 16A
Supports RS485, ...



[SolaX X3-MEGA G2 40kW Inverter - 6 MPPT , Evergy](#)

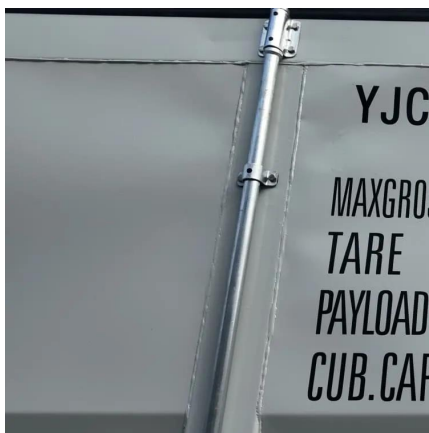
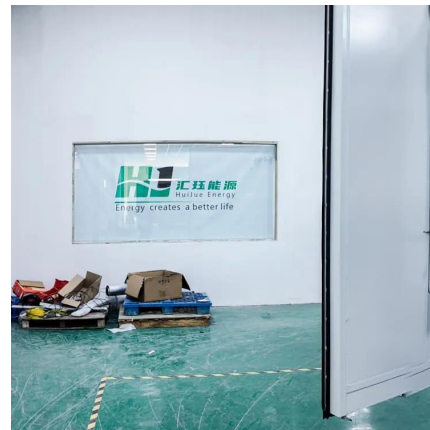
Advanced Commercial Solar Conversion The SolaX X3-MEGA G2 40kW inverter is a high-capacity, three-phase solution engineered for the UK's large-scale commercial solar systems. ...





Solar Inverter Guide: Definition, Types, Costs, and ...

What is the difference between a grid-tied inverter and an off-grid inverter? Grid-tie inverters: These inverters are used to connect the solar ...



How Many Solar Panels Can I Connect to an Inverter?

What happens if I connect too many solar panels to an inverter? If you exceed the inverter's capacity, it "clips" or limits extra power, which ...

40kW Three Phase Grid Tie Solar Inverter

Strong IP65 protection and a completely sealed cover suitable for harsh environments. The on-grid inverter adopts with no isolation transformer H6 full-bridge configuration, highest efficiency ...



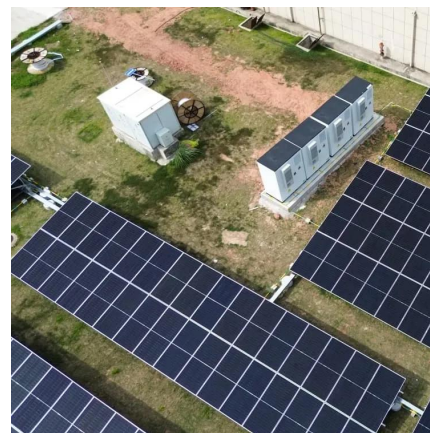
What happens if you connect too many solar panels to an inverter

When you connect too many solar panels, your inverter may not be able to process all the energy being produced. Consequently, not only will it reduce the overall ...



How Many Panels Can I Put on My Inverter?

This article explores the critical aspects of matching solar panels with inverters, detailing the risks of overloading, the importance of correct ...



How Many Panels Can I Put on My Inverter?

Inverters are a key component in any solar power system, converting the direct current (DC) output of the solar panels into alternating current (AC) that can be used by ...

Grid-connected PV Inverter

- . Zero-export function via energy meter 7.1
- Multiple strings and parallel connection meters 7.2
- Use of zero-export function 7.3
- Notes while using zero export function 7.4
- How to ...





40000 Watt DC Solar Inverters

These inverters can handle a range of power sources from 40,000 watts to 49,999 watts. Compare these 40kW commercial solar inverters from ABB, Fronius, SMA, SolarEdge, ...

Contact Us

For catalog requests, pricing, or partnerships, please visit:
<https://www.bringmethehorizon.eu>