



SolarMax Pro Energy Storage Systems

390w photovoltaic panel size





Overview

The standard size of 390 watt solar panels is 72 cells, and its dimensions are compact enough to set an installation in a small area - for example, on the roof. You can buy 390w solar panels from leading manufacturers at the best price on our website.



390w photovoltaic panel size



Hyundai Green Energy HiA-S390HI 390W Solar Panel

PERL technology provides ultra-high efficiency with better performance in low irradiation. Maximizes installation capacity in limited space. Both LID (Light ...

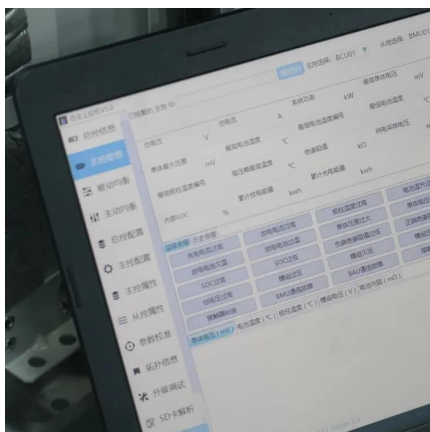
Trina Vertex 390W , Bifacial Solar Panel

Harness the power of next-generation solar technology with the Trina Vertex 390W Bifacial Solar Panel, engineered for maximum performance, durability, and efficiency.



Trina Vertex 390W , Bifacial Solar Panel

Harness the power of next-generation solar technology with the Trina Vertex 390W Bifacial Solar Panel, engineered for maximum performance, durability, ...



Hyundai 390W Solar Panel Bifacial 144-cell HiS ...

This panel takes full advantage of the Passivated Emitter Rear Contact (PERC) technology that

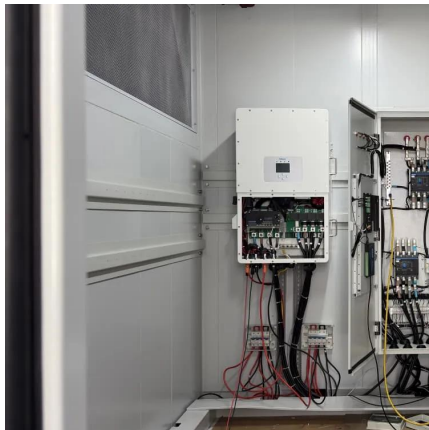


allows it to capture up to 12% more energy. ...



390 Watt Solar panels for sale , Prices, dimensions, weight, ...

390 Watt Solar panels' range of prices, dimensions, sizes, voltage output, specifications datasheets Ranges of information Voltage: 10.26V ~ 64.5V Amp: 6.05A ~ 16.26A



[JA Solar JAM54S31-390/MR All Black 390W Solar Panel](#)

The JA Solar JAM54S31-390/MR is a 390W half-cell solar panel module with a stylish all-black design. Tailored for commercial and residential rooftop solar systems, the solar modules in the ...



[Hyundai 390W HiS-S390PI Bifacial Solar Panel](#)

Q: What is the power output of the Hyundai 390W Bifacial Solar Panel? The Hyundai HiS-S390PI provides 390 watts of power, offering high efficiency and ...





[Hyundai Green Energy HiA-S390HI 390W Solar Panel](#)

PERL technology provides ultra-high efficiency with better performance in low irradiation. Maximizes installation capacity in limited space. Both LID (Light Induced Degradation) and PID ...



[Trina TSM-DE09.05 Solar Panel 390W Module Mono B/W 120C](#)

The Trina TSM-DE09.05 is a 390W monocrystalline solar module from the Vertex S range. Designed with aesthetics in mind, this solar panel boasts excellent colour control thanks to a ...

[Trina 390W \(Pallet of 36\) Bifacial Solar Panels TSM ...](#)

Trina Solar Vertex S+ 390W All Black TOPCon Bifacial Mono Solar Panel TSM-390NE09RC.05 High Efficiency , Sleek Design , Built to Last Pallet-Only , 36 ...



[Hyundai 390W Solar Panel Bifacial 144-cell HiS-S390PI ...](#)

This panel takes full advantage of the Passivated Emitter Rear Contact (PERC) technology that allows it to capture up to 12% more energy. All thanks to a reflective layer on ...



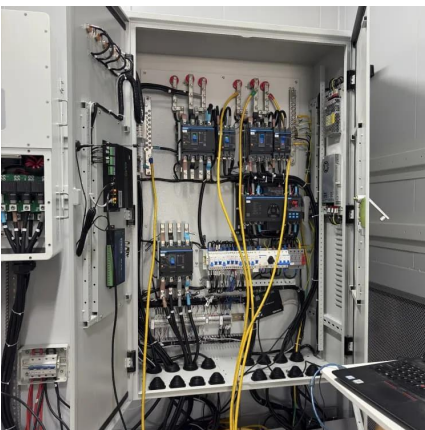
[JA Solar JAM54S31-390/MR All Black 390W Solar ...](#)

The JA Solar JAM54S31-390/MR is a 390W half-cell solar panel module with a stylish all-black design. Tailored for commercial and residential rooftop solar ...



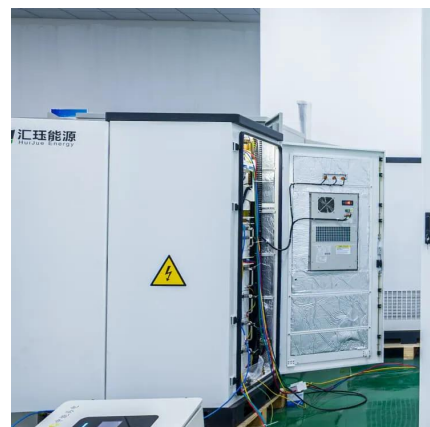
[Trina Solar > 390 Watt Mono Solar Panel. Black Frame](#)

Perfect for Car Ports, Patio Installations and Commercial Projects. More productivity from same roof size. Outstanding visual appearance. Leading 210mm cell technology. Small format ...



[Canadian Solar CS3N-390MS 390W Mono Solar Panel](#)

The CS3N-390MS is an All-Black mono module has dimensions of 1940 mm x 1048 mm which is similar in size to other Canadian Solar 132 cell modules. This is an ideal module for solar ...



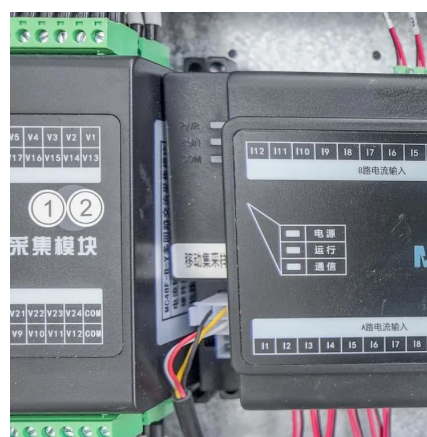


[Solar Panel Output Calculator , Get Maximum Power ...](#)

The Solar Panel Output Calculator is a highly useful tool for anyone looking to understand the total output, production, or power generation ...

[JA Solar 390 Watt Panel - JAM72S09-390/PR](#)

JA Solar 390W Panel Features: This time-tested legacy module series has been proven to be one of the powerful and most reliable products offered by JA Solar and the most popular choice by ...



[Trina Solar > 390 Watt Mono Solar Panel, Black ...](#)

Perfect for Car Ports, Patio Installations and Commercial Projects. More productivity from same roof size. Outstanding visual appearance. Leading ...

Trina Solar US 390

Want a custom solar estimate for your home? Try our Solar Calculator. To compare updated solar panel prices by brand, system size, and more, check out our article on the cost of solar.



JAM72S10 390-410 PR

IEC TS 62941: 2016 Terrestrial photovoltaic (PV) modules - Guidelines for increased confidence in PV module design qualification and type approval Specifications subject to ...



[Hyundai 390W HiS-S390PI Bifacial Solar Panel](#)

Q: What is the power output of the Hyundai 390W Bifacial Solar Panel? The Hyundai HiS-S390PI provides 390 watts of power, offering high efficiency and reliability for residential, commercial, ...



Contact Us

For catalog requests, pricing, or partnerships, please visit:
<https://www.bringmethehorizon.eu>