



SolarMax Pro Energy Storage Systems

270The maximum current of photovoltaic panels is





Overview

What is a maximum power current rating on a solar panel?

The Maximum Power Current, or I_{mp} for short. And the Short Circuit Current, or I_{sc} for short. The Maximum Power Current rating (I_{mp}) on a solar panel indicates the amount of current produced by a solar panel when it's operating at its maximum power output (P_{max}) under ideal conditions.

What is maximum power current?

Maximum Power Current (I_{mp}): The current at your panel's most efficient operating point. You'll notice that solar panels are rated in watts. That's a very basic combination of the voltage and current. There's a simple formula worth remembering to bring these aspects altogether:

What is voltage output from a solar panel?

Voltage output directly from solar panels can be significantly higher than the voltage from the controller to the battery. Maximum Power Voltage (V_{mp}). This is the voltage when the solar panel produces its maximum power output; we have the maximum power voltage and current here. Here is the setup of a solar panel:

What is the maximum amount of current a PV cell can deliver?

Note: the maximum amount of current that a PV cell can deliver is the short circuit current. Given the linearity of current in the voltage range from zero to the maximum power voltage, the use of the short circuit current for cable and system dimensioning is reasonable.

Do solar panels produce a higher voltage than nominal voltage?

As we can see, solar panels produce a significantly higher voltage (V_{OC}) than the nominal voltage. The actual solar panel output voltage also changes with the sunlight the solar panels are exposed to.



What is a short circuit current rating on a solar panel?

On the other hand, the Short Circuit Current rating (Isc) on a solar panel, as the name suggests, indicates the amount of current produced by the solar panel when it's short-circuited. The Isc rating represents the maximum amount of current the solar panel could potentially generate under the Standard Testing Conditions.



270The maximum current of photovoltaic panels is



[A Complete Guide To Solar Panel Output](#)

Series of solar panels (Reference: nytimes) What is the Solar Panel Output? All solar panels are rated by the amount of DC (direct current) ...

[Understanding Solar Photovoltaic System Performance](#)

This report presents a performance analysis of 75 solar photovoltaic (PV) systems installed at federal sites, conducted by the Federal Energy Management Program (FEMP) with support ...



[How to Test Solar Panels: Output, Amps & Watts](#)

Learn how to test solar panels with and without a multimeter. We cover testing and measuring solar panel output, watts, amps, and voltage.

Solar-cell efficiency

Reported timeline of research solar cell energy conversion efficiencies since 1976 (National Renewable Energy Laboratory) Solar-cell



efficiency is the portion of ...



Understanding Solar Panel Specifications: Voltage, Current, and Power

Short-Circuit Current (I_{sc}): This is the maximum amount of electrical "flow" your panel can generate under ideal conditions. Think of it like measuring the maximum water flow ...

Photovoltaic (PV)

For maximum power, any solar radiation should strike the PV panel at 90° . Depending where on the earth's surface, the orientation and inclination to achieve this varies.



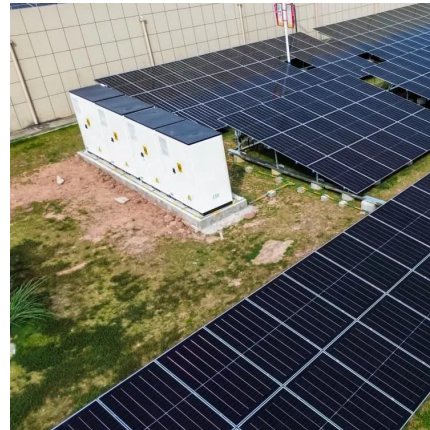
Mixing solar panels - Dos and Don'ts

The latter is only valid provided that the panels connected are of the same type and power rating. Let's consider the depicted below solar panels designated ...



How Much Energy Do Solar Panels Produce?

Solar panel wattage refers to a panels' ideal power production under perfect sunlight and temperature conditions. The wattage is calculated by multiplying ...



What is the maximum current of the solar panel?

Maximum current output from solar panels is influenced by various elements, ranging from design specifications to environmental conditions. ...

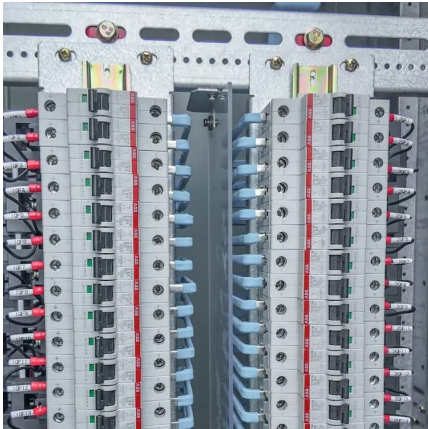
Solar Performance and Efficiency

The conversion efficiency of a photovoltaic (PV) cell, or solar cell, is the percentage of the solar energy shining on a PV device that is converted into ...



Solar Panel kWh Calculator: kWh Production Per Day, Month, Year

Solar panel's maximum power rating. That's the wattage; we have 100W, 200W, 300W solar panels, and so on. How much solar energy do you get in your area? That is determined by ...



Understanding the Maximum Current of Photovoltaic Panels: A ...

Imagine your PV panels as overenthusiastic gym buddies - sometimes they need a spotter. That maximum current rating isn't just a number; it's a warning label for your wiring and inverters.



[Solar Panel Ratings Explained - Wattage, Current, ...](#)

The Maximum Power Current rating (I_{mp}) on a solar panel indicates the amount of current produced by a solar panel when it's operating ...

[Understanding Solar Panel Voltage and Current Output](#)

Short Circuit Current (I_{sc}): The maximum current your panel can produce in perfect conditions.
Maximum Power Current (I_{mp}): The current at your panel's ...





[Solar Panel Amps Calculator: What's a Panels Current?](#)

In this article, I'll review the different current ratings of PV modules and walk you through the process of how to properly calculate the current ...

[Testing Solar Panels - 4 Ways ,Output, Amps](#)

Testing your solar panels is one of the greatest ways to obtain an accurate reading of their actual power production. It makes logical that many ...



[Understanding Solar Panel Specifications: Voltage, ...](#)

Short-Circuit Current (I_{sc}): This is the maximum amount of electrical "flow" your panel can generate under ideal conditions. Think of it like ...

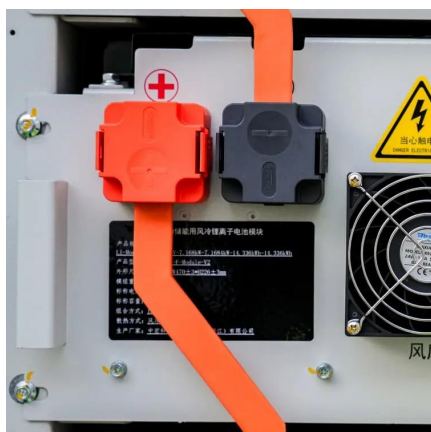
[Understanding Solar Panel Voltage and Current Output](#)

Short Circuit Current (I_{sc}): The maximum current your panel can produce in perfect conditions.
Maximum Power Current (I_{mp}): The current at your panel's most efficient operating point.



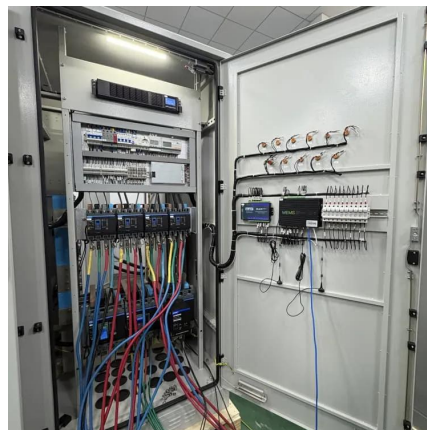
[Solar Panel Amps Calculator: What's a Panels Current?](#)

To calculate the current when your solar panel is generating its maximum power, you need to divide the maximum rated power of the panel in watts by the maximum power voltage (Vmp) ...



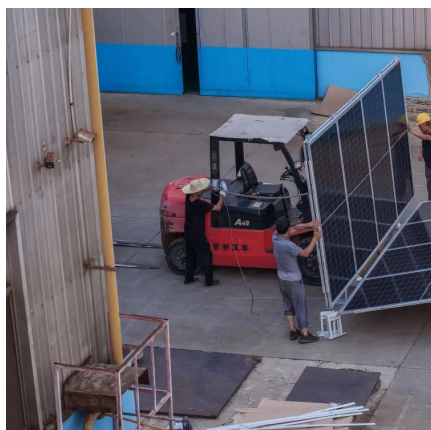
270 Watt Solar Panel: A Wise Investment for Empowered Living

270 Watt Solar Panel In today's energy-conscious world, solar panels have moved from being an emerging technology to a mainstream solution for homes, businesses, and ...



What is the maximum current of the solar panel? , NenPower

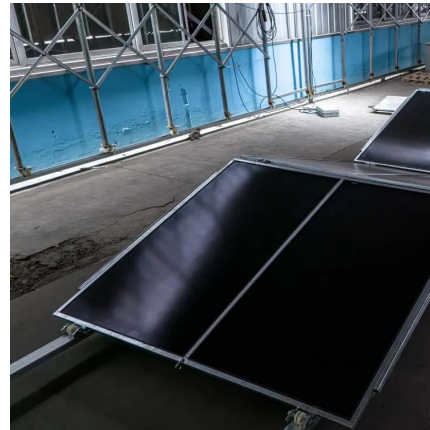
Maximum current output from solar panels is influenced by various elements, ranging from design specifications to environmental conditions. Recognizing the amplification ...





Understanding Maximum Power Points (MPP)

Understanding Maximum Power Points (MPP)
Designing systems so that panels operate as closely as possible to their Maximum Power Point is critical to maximizing the performance of ...

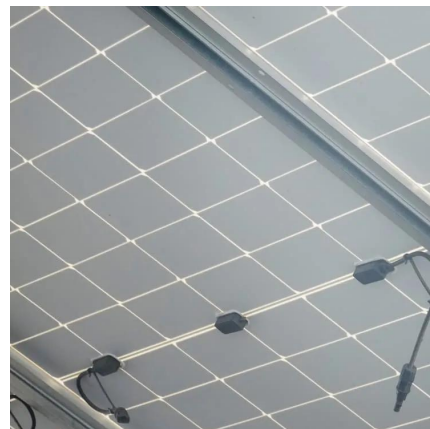


What is the maximum current generated by photovoltaic panels

For PV systems with a generating capacity of 100 kW or more, a professional engineer may calculate the maximum current based on PV array simulations using the maximum available 3 ...

Solar Panel Output Voltage: How Many Volts Do PV ...

For maximum power voltage (V_{mp}), you can read a good explanation of what it is on the PV Education website. In most cases, it's not all that relevant when ...



Calculating Current Ratings of Photovoltaic Modules , EC& M

In this article, I'll review the different current ratings of PV modules and walk you through the process of how to properly calculate the current values as required by the NEC, as ...



Solar Panel Output Voltage: How Many Volts Do PV Panel ...

For maximum power voltage (V_{mp}), you can read a good explanation of what it is on the PV Education website. In most cases, it's not all that relevant when talking about solar panel ...



Solar Panel Ratings Explained - Wattage, Current, Voltage, and

The Maximum Power Current rating (I_{mp}) on a solar panel indicates the amount of current produced by a solar panel when it's operating at its maximum power output (P_{max}) ...

Contact Us

For catalog requests, pricing, or partnerships, please visit:
<https://www.bringmethehorizon.eu>