



SolarMax Pro Energy Storage Systems

12V three-series two-parallel lithium battery pack





Overview

How to connect 3 12V batteries in series?

If your battery allows it, you can repeat the above steps to connect more batteries in series. You can wire three 12V batteries in series to create a 36V battery bank. Once again, just connect the negative terminal of your 2-battery series string to the positive terminal of the third battery.

How many 12V batteries are in a 48V 35 Ah battery pack?

For our last series example, below are four 12v batteries in series to create a 48v 35 AH battery pack. When connecting batteries in series: Never cross the remaining open positive and negative terminals with each other, as this will short-circuit the batteries and cause damage or injury. The other type of connection is parallel.

What happens if you connect two 12V 50Ah batteries in parallel?

If you connect two 12v 50ah batteries in parallel, it will still be a 12 volt system, but the amps will double to 100ah, so the batteries will last longer. On the other hand, when you connect batteries in series, voltage is increased while capacity (ah) stays the same.

What happens if you connect 3 12 volt batteries in parallel?

For example, if you connect three 12-volt batteries in parallel, the total output is still 12 volts. Capacity: The total capacity increases. For instance, if each battery has a capacity of 100 amp-hours (Ah), the total capacity of three connected in parallel would be 300 Ah.

Do I need a 12V battery system?

If you have two 12V, 200Ah hour batteries and you need 12V system for installation. Simply, connect both of the batteries in parallel where the overall battery capacity would be 400Ah and the same voltage level i.e. 12V. Keep in mind that battery discharge quickly in parallel as compared to series batteries



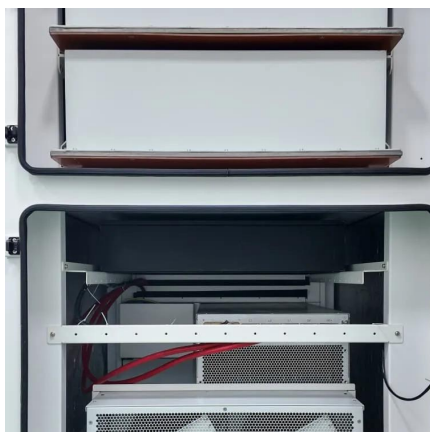
connection.

Can you wire a 12V battery in a series?

Look in your battery's product manual or spec sheet for these limits. Wiring batteries in series sums their voltages and keeps their amp hours the same. It's particularly useful for wiring two 6V lead acid batteries, or four 3.2V lithium cells, to make a 12V battery.



12V three-series two-parallel lithium battery pack



[How To Connect Batteries In Series and Parallel](#)

If you have two sets of batteries connected in series, you can wire both sets into a parallel connection to make a series-parallel battery bank. In the images below we will walk ...

[Connecting Lithium Batteries in Parallel and Series](#)

Lithium battery pack technique refers to the processing, assembly and packaging of lithium battery pack. The process of assembling lithium cells together is ...



[BU-302: Series and Parallel Battery Configurations](#)

Read about serial and parallel battery configurations. Connecting battery cells gains higher voltages or achieves improved current loading.

[Batteries in Parallel vs Series, All You Need to Know](#)

Deciding between series and parallel battery wiring depends on your voltage and capacity



needs. Series increases voltage while keeping ...



Lithium Series, Parallel and Series and Parallel

Connecting multiple lithium batteries into a string of batteries allows us to build a battery bank with the potential to operate at an increased voltage, or with increased capacity and runtime, or both.

BU-302: Series and Parallel Battery Configurations

In this tutorial, I'll show you step-by-step how to wire batteries in series and parallel, as well as how to combine the two to create series-parallel combinations.



LiFePO4 Lithium Batteries in Series VS Parallel ...

Connecting lithium-ion batteries in parallel or series is more complex than merely linking circuits in series or parallel. Ensuring the safety of ...



DR.PREPARE 12V 100Ah LiFePO4 Battery (3 Pack), Lithium ...

[Series and Parallel Connection] With 3 pack of 12V 100Ah LiFePO4 Battery, whether creating a 36V 100Ah lithium ion battery bank or a 12V 300Ah power system, our Dr.Prepare LiFePO4 ...

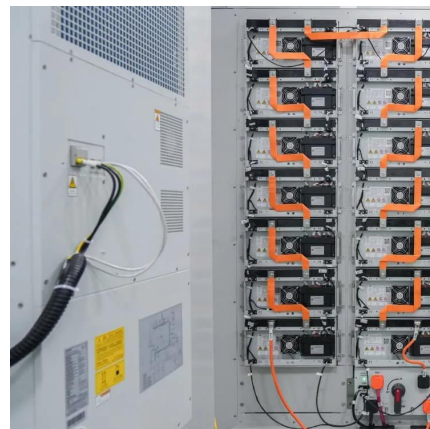


[How to Wire Batteries in Parallel or Series](#)

Using the same two 12V 10Ah Dakota Lithium batteries, what you'll end up with is a doubling of ampere-hours, or a 12V 20Ah battery pack. In both cases, adding more Dakota ...

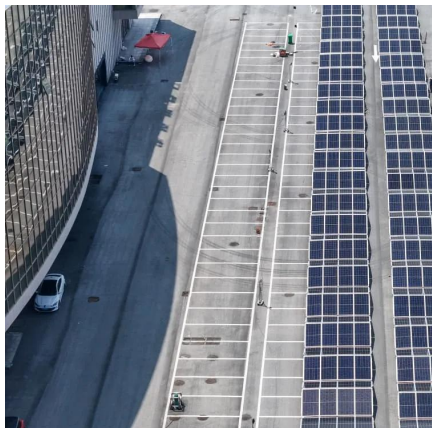
[Batteries in Series vs Parallel: Which is Better?](#)

Do you know the difference between batteries in series vs parallel? Find out how to connect batteries in series or parallel & discover which one's best for you!



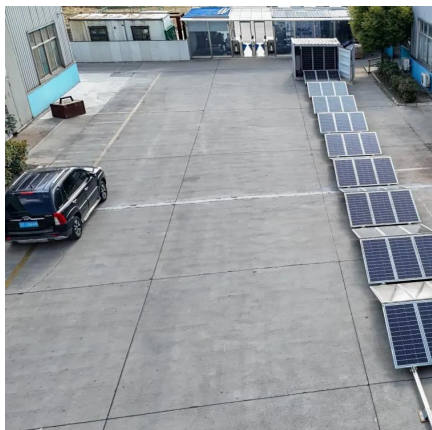
[Batteries and Chargers Connected in Series and Parallel](#)

Learn how to connect batteries in series and parallel for different voltage and amp-hour capacities. Battery Tender® offers detailed instructions and diagrams for safely charging and configuring ...



[How to Wire Batteries in Parallel or Series](#)

Using the same two 12V 10Ah Dakota Lithium batteries, what you'll end up with is a doubling of ampere-hours, or a 12V 20Ah battery pack. In ...



[How To Make A Parallel Battery Connection Safely?](#)

Check here. Parallel connections keep voltage constant but sum amp-hour capacities. For example, two 12V 100Ah lithium batteries in parallel provide 12V 200Ah. ...

Battery Packs In Series Or Parallel: Key Differences And Wiring

When choosing between series and parallel configurations for battery packs, consider voltage requirements, current capacity, space considerations, and applications.





[Ultimate Power: Lithium-Ion Batteries In Series](#)

At some point, the 3.6 V of a single lithium ion battery just won't do, and you'll absolutely want to stack Lilon cells in series. When you need high ...

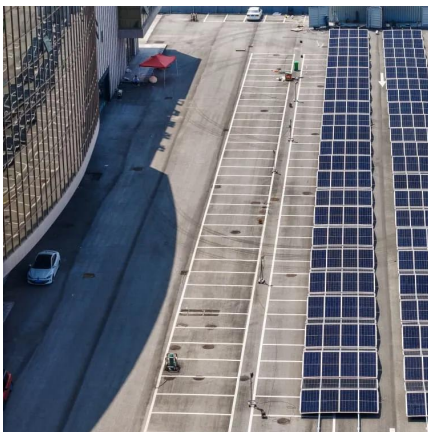
[How to Balance Lithium Batteries with Parallel BMS?](#)

A parallel BMS regulates the current flow between 2 or multiple batteries connected in parallel, learn how it works and how to connect it.



[12V Three-Series Two-Parallel Word Monitoring ...](#)

Amazon : NALMAXO 12V Three-Series Two-Parallel Word Monitoring Equipment/Aircraft Model/Fascia Gun/Speaker 11.1V 18650 Lithium Battery Pack (Size : ...



[How To Connect Batteries In Series and Parallel](#)

If you have two sets of batteries connected in series, you can wire both sets into a parallel connection to make a series-parallel battery bank. In ...



[How to Calculate the Number of Lithium Batteries in ...](#)

Lithium Battery PACK Lithium battery PACK refers to the processing, assembly and packaging of lithium battery packs. The process of assembling lithium ...

[Powering Up Safely: How to Wire Batteries in Series](#)

Wiring lithium-ion batteries in series requires careful attention to detail and adherence to safety guidelines. Always refer to the specifications ...



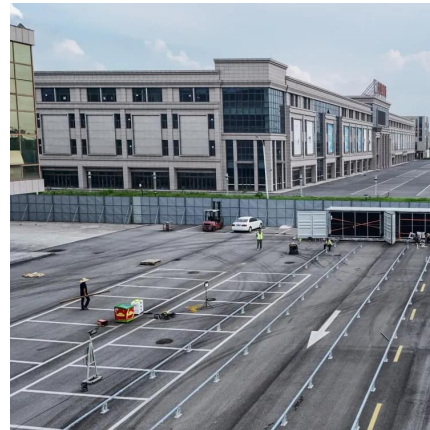
[Lithium battery series and parallel, the difference ...](#)

Before performing calculations, we need to know what cells are used to assemble this lithium battery pack because different cells have different voltage ...



[All Things You Need to Know about Lithium Battery ...](#)

Now you have two sets of three batteries, simply, connect two sets of three batteries in series and then connect the two set in parallel (as shown in fig ...



12V LiFePO4 Battery 100Ah 2Pack, Lithium Batteries with 100A ...

It is a perfect upgrade for any 12V Deep Cycle battery, and best choice for many applications such as RV, Camping, Solar System, Fish Finders, Ice Fishing or Home Backup Power.

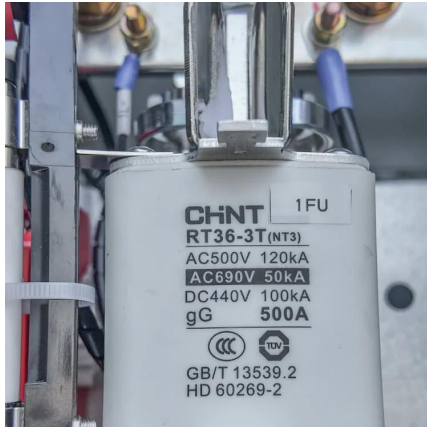
[How to Wire 12V Batteries in Series & Parallel \(w/ Photos!\)](#)

In this tutorial, I'll show you step-by-step how to wire batteries in series and parallel, as well as how to combine the two to create series-parallel combinations.



2 Pack 12V 100Ah Low Temp Cutoff Lithium Battery, 1280Wh ...

Buy 2 Pack 12V 100Ah Low Temp Cutoff Lithium Battery, 1280Wh LiFePO4 Battery with 100A BMS, Support in Series/Parallel, Up to 5000+ Rechargeable Cycles, Perfect ...



Understanding the Performance of Lithium Batteries in Parallel ...

Lithium battery parallel gets much more power consumption compared to series with the same voltage level. It is because of power dissipation from the resistors.



[12V LiFePO4 Battery 100Ah 2Pack. Lithium Batteries ...](#)

It is a perfect upgrade for any 12V Deep Cycle battery, and best choice for many applications such as RV, Camping, Solar System, Fish Finders, Ice Fishing or ...

[Batteries in Series vs Parallel: Which is Better?](#)

Do you know the difference between batteries in series vs parallel? Find out how to connect batteries in series or parallel & discover which one's best for you!





All Things You Need to Know about Lithium Battery Series, Parallel ...

Now you have two sets of three batteries, simply, connect two sets of three batteries in series and then connect the two set in parallel (as shown in fig above) where the overall battery capacity ...

Contact Us

For catalog requests, pricing, or partnerships, please visit:
<https://www.bringmethehorizon.eu>